



Fecal Calprotectin Level Reflects the Severity of *Clostridium difficile* Infection

Jieun Kim, M.D.¹, Heejung Kim, M.D.¹, Hyun Ju Oh, M.T.¹, Hyung Sun Kim, B.S.¹, Youn Jee Hwang, B.S.², Dongeun Yong, M.D.¹, Seok Hoon Jeong, M.D.¹, and Kyungwon Lee, M.D.¹

Department of Laboratory Medicine and Research Institute of Bacterial Resistance¹; Brain Korea 21 PLUS Project for Medical Science², Yonsei University College of Medicine, Seoul, Korea

Clostridium difficile is a significant nosocomial and community-acquired pathogen, and is the leading cause of antibiotic-induced diarrhea associated with high morbidity and mortality. Given that the treatment outcome depends on the severity of *C. difficile* infection (CDI), we aimed to establish an efficient method of assessing severity, and focused on the stool biomarker fecal calprotectin (FC). FC directly reflects the intestinal inflammation status of a patient, and can aid in interpreting the current guidelines, which requires the integration of indirect laboratory parameters. The distinction of 80 patients with CDI versus 71 healthy controls and 30 severe infection cases versus 50 mild cases was possible using FC as a marker. The area under the receiver operating characteristic curves were 0.821 and 0.746 with a sensitivity of 75% and 70% and specificity of 79% and 80%, for severe versus mild cases, respectively. We suggest FC as a predictive marker for assessing CDI severity, which is expected to improve the clinical management of CDI.

Key Words: *Clostridium difficile* infection, Fecal calprotectin, Severity assessment

Received: July 1, 2016

Revision received: July 19, 2016

Accepted: October 5, 2016

Corresponding author: Dongeun Yong
Department of Laboratory Medicine and
Research Institute of Bacterial Resistance,
Yonsei University College of Medicine,
50-1, Yonsei-ro, Seodaemun-gu, Seoul
03722, Korea
Tel: +82-2-2228-2442
Fax: +82-2-313-0956
E-mail: deyong@yuhs.ac

© The Korean Society for Laboratory Medicine

This is an Open Access article distributed under the terms of the Creative Commons Attribution Non-Commercial License (<http://creativecommons.org/licenses/by-nc/4.0>) which permits unrestricted non-commercial use, distribution, and reproduction in any medium, provided the original work is properly cited.

INTRODUCTION

Clostridium difficile is a significant nosocomial and community-acquired pathogen, and is the leading cause of antibiotic-induced diarrhea [1, 2]. *C. difficile* infection (CDI) diagnosis currently relies on clinical manifestations of diarrhea, fever, abdominal pain, and leukocytosis, supported by laboratory confirmation of toxigenic *C. difficile* in the stool or colonoscopic findings consistent with pseudomembranous colitis (PMC). CDI is associated with high morbidity and mortality, thus, to improve CDI management and clinical outcome, several guidelines have been suggested as factors to help define severe CDI, including patients' age, body temperature, serum albumin level, and peripheral white blood cell count [3-6]. However, the proposed severity assessments have limitations, and not all recommended laboratory findings are readily accessible, making comprehensive integra-

tion difficult. Moreover, monitoring CDI after initiating therapy is often necessary, especially when a patient is treated with vancomycin. However, concerns exist regarding the risk of prolonged vancomycin use, which would exert selection pressure to promote the colonization and transmission of vancomycin-resistant enterococci and increase systemic side effects in patients with renal failure [7].

Recently, non-invasive fecal biomarkers that reflect intestinal inflammation were identified, and their CDI diagnostic values were evaluated [8]. Fecal lactoferrin, a fecal material derived from neutrophils, has been shown to correlate with CDI severity [9]. In addition, mRNA of C-X-C motif chemokine 5 (CXCL-5) and mRNA and protein of interleukin (IL)-8 correlated with clinical outcome [10], whereas positive guaiac-based fecal occult blood (FOB) showed low sensitivity in diagnosing CDI [11]. However, except for FOB, the previously investigated biomarkers are

not currently available for *in vitro* diagnostic use in Korea, and only fecal calprotectin (FC) level is currently used for examining intestinal inflammation [12].

FC, a 36.5-kDa molecule derived from the cytoplasm of neutrophils, mononuclear cells, and squamous epithelial cells, indicates the inflammatory status of the intestinal lumen [13]. The role of FC was examined in many other gastrointestinal diseases such as inflammatory bowel disease (IBD), acute gastroenteritis, and malignancies [14]. The use of FC in CDI diagnosis was also demonstrated in a few studies; however, this marker showed restricted utility for assessing CDI severity [11, 15]. We investigated demographics of subjects according to severity of CDI and demonstrated the diagnostic value of FC to determine its potential as an alternative biomarker for monitoring CDI severity.

METHODS

1. Subjects

Seventy-one healthy control subjects and 80 CDI subjects were randomly selected for this retrospective study. Subjects were recruited among patients whose stool samples were requested for routine fecal immunochemical test in medical examinations and

for *C. difficile* culture, respectively, between March and October of 2015. This study was conducted at a University tertiary referral hospital in Seoul, South Korea, and it was approved by the Institutional Review Board of Severance Hospital. The demographics of subjects were assessed by reviewing hospital records and laboratory results (Table 1).

2. Definitions

Since FC level can be increased under some circumstances [16], subjects without possible intestinal inflammation were selected as healthy controls. CDI patients were strictly defined by the presence of symptoms, usually including diarrhea, and a positive test for toxigenic *C. difficile* culture as determined by GeneXpert *C. difficile* PCR assay (Cepheid, Sunnyvale, CA, USA) and toxin B PCR.

CDI patients were divided into mild and severe groups based on a severity assessment score developed by Zar *et al* [6]. Patients with a score of ≥ 2 were considered to have severe CDI. One point each was given for age of >60 yr, body temperature $>38.3^{\circ}\text{C}$, albumin level <25 g/L, or peripheral white blood cell count $>15 \times 10^9$ cells/L within 48 hr of enrollment. In the case of endoscopic evidence of PMC or treatment in the intensive care

Table 1. Baseline characteristics of patients with *Clostridium difficile* infection according to disease severity

| Characteristics | N (%) of patients | | P value |
|--|-----------------------|--------------------------------|---------|
| | Mild disease (n = 50) | Severe disease (n = 30) | |
| Male | 21 (42) | 11 (37) | 0.637 |
| Age, median (yr) | 59 (range, 49-73) | 71 (range, 60-79) | 0.025 |
| >60 yr of age | 23 (46) | 22 (73) | 0.017 |
| Received antibiotic therapy prior to onset of CDI | 44 (88) | 26 (86) | 1.000 |
| Received antibiotic therapy within 14 days prior to onset of CDI | 41 (82) | 24 (80) | 0.824 |
| Underlying diseases | | | |
| Cardiovascular disease and/or hypertension | 27 (54) | 17 (57) | 0.816 |
| Malignancy | 17 (34) | 12 (40) | 0.589 |
| Chronic respiratory disease | 6 (12) | 6 (20) | 0.351 |
| Diabetes mellitus | 9 (18) | 8 (27) | 0.359 |
| Renal failure | 12 (24) | 12 (40) | 0.131 |
| Factors associated with disease severity | | | |
| Hospitalized in the ICU | 1 (2) | 4 (13) | 0.063 |
| Body temperature $>38.3^{\circ}\text{C}$ | 3 (8) | 8 (30) | 0.042 |
| Serum albumin level <25 g/L | 1 (2) | 8 (27) | 0.002 |
| WBC count $>15 \times 10^9$ cells/L | 1 (2) | 8 (27) | 0.002 |
| Presence of pseudomembranous colitis | 2 (5) | 4 (13) | 0.394 |
| Fecal calprotectin ($\mu\text{g/g}$) | 188.2 (41.4-591.6) | 1,391.5 (range, 173.5-2,075.9) | |

Abbreviations: CDI, *Clostridium difficile* infection; WBC, white blood cell count; ICU, intensive care unit.

unit, 2 points were given.

3. Measurement of FC

FC was measured in a single frozen stool sample from all subjects by using a commercially available ELISA kit: Calprotectin Bühlmann ELISA (Bühlmann Laboratories AG, Schönenbuch, Switzerland). Experimental samples were assayed with the standards and controls included with the kit according to the manufacturer's instructions. The supernatants were diluted 3-fold if a higher concentration was expected.

4. Statistical analyses

Statistical analyses were performed by using SPSS software (version 23.0; SPSS Inc., Chicago, IL, USA). Means of normally distributed quantitative values in more than two groups were compared by one-way analysis of variance, whereas non-normally distributed quantitative values were compared by using the Kruskal-Wallis test. Non-parametric tests were used to determine whether clinical characteristics differed between the mild CDI group and severe CDI group, including the Mann-Whitney U test, Pearson's chi-square test, and Fisher's exact test. A two-tailed value of $P < 0.05$ was considered statistically significant. ROC curve was analyzed to identify the optimal cut-off values for our study.

RESULTS

1. Characteristics of CDI patients

Among the 80 CDI subjects enrolled in the study, 50 had mild CDI and 30 had severe CDI. Baseline characteristics are shown in Table 1. There was no statistically significant difference in the history of antibiotic therapy between the two groups or in specific underlying diseases.

2. Diagnostic accuracy of FC and cut-off values according to CDI severity

The median FC level was significantly higher (1,391.5 $\mu\text{g/g}$; interquartile range [IQR]=173.5-2,075.9 $\mu\text{g/g}$) in the severe CDI group than in the mild CDI group (188.2 $\mu\text{g/g}$; IQR=41.4-591.6 $\mu\text{g/g}$) ($P < 0.001$). The area under the ROC curve (AUC) was 0.746 for CDI severity with an optimum FC value of 729.8 $\mu\text{g/g}$, sensitivity of 70%, and specificity of 80% between severe CDI and mild CDI cases. The AUC was 0.821 for CDI diagnosis, with an optimum FC value of 112.5 $\mu\text{g/g}$, sensitivity of 75%, and specificity of 79% between CDI and non-CDI cases (Fig. 1).

FC concentrations were higher ($P < 0.001$) in the 30 severe CDI patients (median, 1,391.5 $\mu\text{g/g}$; IQR, 170.0-2,088.1 $\mu\text{g/g}$) than in the 50 mild CDI patients (median, 188.2 $\mu\text{g/g}$; IQR, 41.4-188.2 $\mu\text{g/g}$), and both were higher than those of the healthy

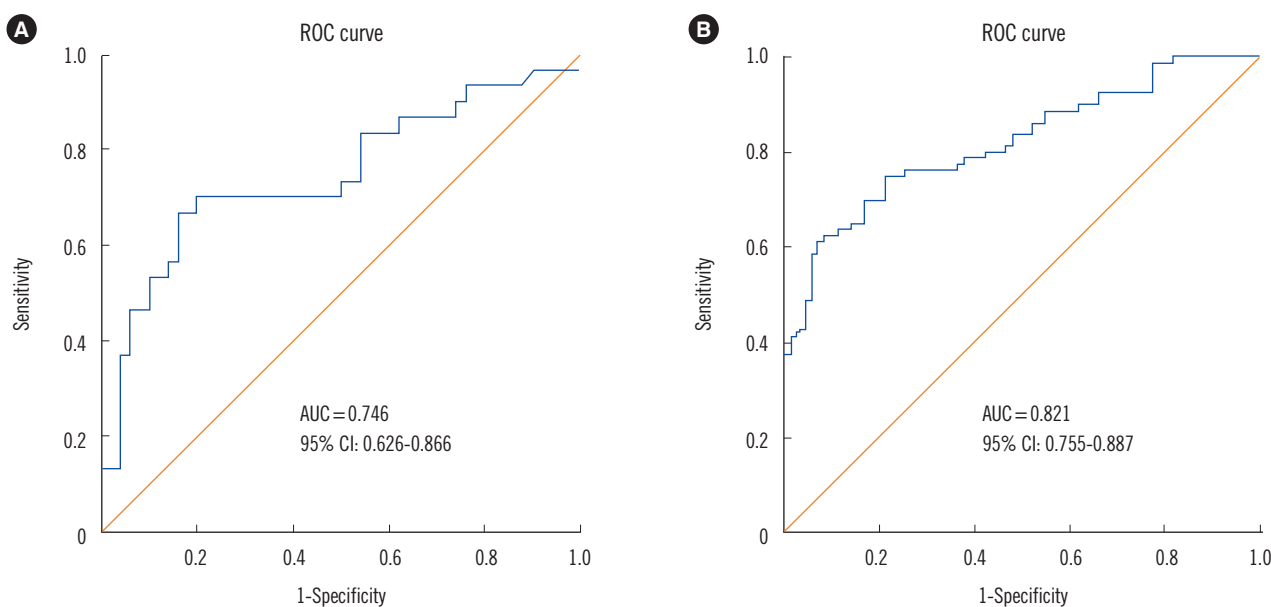


Fig. 1. ROC curve analysis of fecal calprotectin concentrations in *Clostridium difficile* infection (CDI) cases and healthy controls. (A) The area under the ROC curve (AUC) is 0.746 (95% confidence interval [CI], 0.626-0.866) in severe CDI vs mild CDI; (B) The AUC is 0.821 (95% CI, 0.755-0.887) in CDI vs healthy controls.

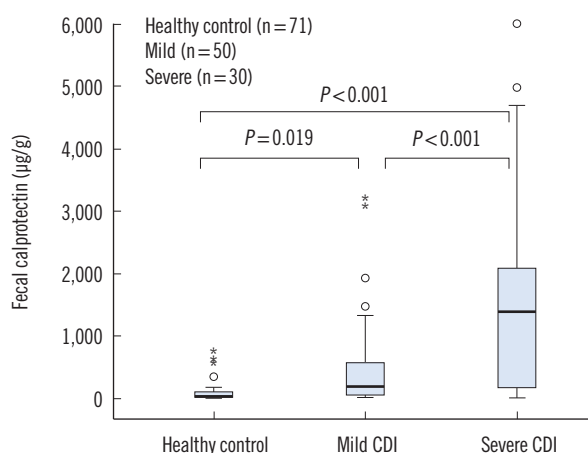


Fig. 2. Fecal calprotectin levels of three groups of subjects (healthy controls, mild *Clostridium difficile* infection [CDI], and severe CDI). The box plot shows the median (bold line), the first quartile (lower border of the box) and the third quartile (upper border of the box); the whiskers indicate 1.5 times the interquartile range above and below the 75th and 25th percentiles. The circles indicate the outliers.

controls (median, 35.6 µg/g; IQR, 10.7-108.9 µg/g) ($P=0.019$ and $P<0.001$ for mild CDI and severe CDI, respectively) (Fig. 2).

DISCUSSION

Careful consideration is essential when changing antibiotic regimens, and prompt and objective evidence can guide appropriate therapy [17]. However, many approaches currently used in the laboratory diagnosis of CDI are time-consuming and costly, providing limited information on disease severity [18]. According to the current guidelines, when initiating antibiotic therapy is necessary, oral metronidazole is recommended in cases of non-severe CDI and vancomycin is recommended for severe or refractory CDI [4]. Therefore, it is important to confirm infection severity with a reliable biomarker, which can in turn serve as a guide for selecting antibiotic regimens that best reflect CDI status. This objective assessment would allow for improved patient care to overcome the current limitations of continuous monitoring and to reduce side effects and the potential for therapeutic resistance.

The diagnostic significance of FC has been assessed in many gastrointestinal disorders, and its concentration in healthy subjects is generally below 50 µg/g [19], which was concordant with the levels of the subjects included in our study. However, FC concentrations have been reported to be as high from 994 mg/L [11] to about 2,000 µg/g [15]. Eleven CDI patients (13.8% of the 80 patients) in this study had high FC concentrations (over

2,000 µg/g), including one patient with a level of 6,000 µg/g who had a total severity score of 3 points, with persistent watery diarrhea and fulminant PMC. These findings indicate greater intestinal inflammation, which may reflect the significant morbidity and mortality associated with severe CDI.

Previous studies have shown the diagnostic utility of FC in CDI, in which the patients' status was confirmed by a combination of toxin ELISA, quantitative PCR, or toxigenic *C. difficile* culture, which differs from the more accurate practice of CDI diagnosis routinely performed in our hospital, where the diagnosis is made by toxigenic *C. difficile* culture, GeneXpert *C. difficile* PCR assay, and toxin B PCR [15, 20]. Furthermore, to verify the diagnostic significance of FC, we strictly excluded patients and healthy controls with gastrointestinal disorders other than CDI, which can influence FC levels.

Here, we demonstrated that FC significantly correlated with CDI severity and could effectively discriminate among severe CDI, mild CDI, and healthy controls. FC showed a particularly strong ability to distinguish CDI patients from healthy controls according to the respectable AUC value, higher sensitivity, and high specificity.

There are currently no guidelines concerning the use of fecal biomarkers for estimating CDI severity. Fecal biomarkers have been proposed and widely studied as potential non-invasive alternatives in IBD research; however, potential biomarkers that can serve as indicators of disease and disease stratification are also needed to more effectively direct CDI treatment. We suggest FC as a predictive marker for assessing CDI severity, which is expected to improve the clinical management of this condition.

Authors' Disclosures of Potential Conflicts of Interest

No potential conflicts of interest relevant to this article were reported.

REFERENCES

1. Kim YA, Rim JH, Choi MH, Kim H, Lee K. Increase of *Clostridium difficile* in community; another worrisome burden for public health. *Ann Clin Microbiol* 2016;19:7-12.
2. Poutanen SM and Simor AE. *Clostridium difficile*-associated diarrhea in adults. *CMAJ* 2004;171:51-8.
3. Cohen SH, Gerding DN, Johnson S, Kelly CP, Loo VG, McDonald LC, et al. Clinical practice guidelines for *Clostridium difficile* infection in adults: 2010 update by the society for healthcare epidemiology of America (SHEA) and the infectious diseases society of America (IDSA). *Infect Control Hosp Epidemiol* 2010;31:431-55.

4. Debast SB, Bauer MP, Kuijper EJ. European Society of Clinical Microbiology and Infectious Diseases: update of the treatment guidance document for *Clostridium difficile* infection. *Clin Microbiol Infect* 2014;20(S2): S1-26.
5. Surawicz CM, Brandt LJ, Binion DG, Ananthakrishnan AN, Curry SR, Gilligan PH, et al. Guidelines for diagnosis, treatment, and prevention of *Clostridium difficile* infections. *Am J Gastroenterol* 2013;108:478-98; quiz 499.
6. Zar FA, Bakkanagari SR, Moorthi KM, Davis MB. A comparison of vancomycin and metronidazole for the treatment of *Clostridium difficile*-associated diarrhea, stratified by disease severity. *Clin Infect Dis* 2007;45: 302-7.
7. Aradhya S, Manian FA, Hafidh SA, Bhutto SS, Alpert MA. Significant absorption of oral vancomycin in a patient with *Clostridium difficile* colitis and normal renal function. *South Med J* 2006;99:518-20.
8. Kim H, Kim WH, Kim M, Jeong SH, Lee K. Evaluation of a rapid membrane enzyme immunoassay for the simultaneous detection of glutamate dehydrogenase and toxin for the diagnosis of *Clostridium difficile* infection. *Ann Lab Med* 2014;34:235-9.
9. Boone JH, DiPersio JR, Tan MJ, Salstrom SJ, Wickham KN, Carman RJ, et al. Elevated lactoferrin is associated with moderate to severe *Clostridium difficile* disease, stool toxin, and O27 infection. *Eur J Clin Microbiol Infect Dis* 2013;32:1517-23.
10. El Feghaly RE, Stauber JL, Deych E, Gonzalez C, Tarr PI, Haslam DB. Markers of intestinal inflammation, not bacterial burden, correlate with clinical outcomes in *Clostridium difficile* infection. *Clin Infect Dis* 2013; 56:1713-21.
11. Shastri YM, Bergis D, Povse N, Schäfer V, Shastri S, Weindel M, et al. Prospective multicenter study evaluating fecal calprotectin in adult acute bacterial diarrhea. *Am J Med* 2008;121:1099-106.
12. Lee KM. Fecal biomarkers in inflammatory bowel disease. *Intest Res* 2013;11:73-8.
13. Steinbakk M, Naess-Andresen CF, Lingaas E, Dale I, Brandtzaeg P, Fagerhol MK. Antimicrobial actions of calcium binding leucocyte L1 protein, calprotectin. *Lancet* 1990;336:763-5.
14. Caccaro R, D'Inca R, Sturniolo GC. Clinical utility of calprotectin and lactoferrin as markers of inflammation in patients with inflammatory bowel disease. *Expert Rev Clin Immunol* 2010;6:551-8.
15. Whitehead SJ, Shipman KE, Cooper M, Ford C, Gama R. Is there any value in measuring faecal calprotectin in *Clostridium difficile* positive faecal samples? *J Med Microbiol* 2014;63:590-3.
16. van Rheenen PF, Van de Vijver E, Fidler V. Faecal calprotectin for screening of patients with suspected inflammatory bowel disease: diagnostic meta-analysis. *BMJ* 2010;341:c3369.
17. Leekha S, Terrell CL, Edson RS. General principles of antimicrobial therapy. *Mayo Clin Proc* 2011;86:156-67.
18. Crobach MJ, Dekkers OM, Wilcox MH, Kuijper EJ. European Society of Clinical Microbiology and Infectious Diseases (ESCMID): data review and recommendations for diagnosing *Clostridium difficile*-infection (CDI). *Clin Microbiol Infect* 2009;15:1053-66.
19. Waugh N, Cummins E, Royle P, Kandala NB, Shyangdan D, Arasaradnam R, et al. Faecal calprotectin testing for differentiating amongst inflammatory and non-inflammatory bowel diseases: systematic review and economic evaluation. *Health Technol Assess* 2013;17:xv-xix, 1-211.
20. Swale A, Miyajima F, Roberts P, Hall A, Little M, Beadsworth MB, et al. Calprotectin and lactoferrin faecal levels in patients with *Clostridium difficile* infection (CDI): a prospective cohort study. *PLoS One* 2014;9: e106118.