

# Acute Kidney Injury in Patients with Sepsis and Septic Shock: Risk Factors and Clinical Outcomes

Sang Heon Suh, Chang Seong Kim, Joon Seok Choi, Eun Hui Bae, Seong Kwon Ma, and Soo Wan Kim

Department of Internal Medicine, Chonnam National University Medical School, Gwangju, Korea.

Received: August 7, 2012

Revised: September 16, 2012

Accepted: September 17, 2012

Corresponding author: Dr. Soo Wan Kim,

Department of Internal Medicine,  
Chonnam National University Medical School,  
42 Jebong-ro, Gwangju 501-757, Korea.

Tel: 82-62-220-6271, Fax: 82-62-225-8578

E-mail: skimw@chonnam.ac.kr

The authors have no financial conflicts of interest.

**Purpose:** The aim of this study was to investigate clinical characteristics and risk factors of acute kidney injury (AKI) in patients with sepsis and septic shock. Additionally, we explored whether the severity of AKI affects on the clinical outcomes. **Materials and Methods:** Data were collected retrospectively in a single center. Among 5680 patients who visited emergency department from January to December 2010, 992 patients with sepsis and septic shock were enrolled. Patients were divided into two groups, patients who developed AKI or not, to compare the baseline characteristics, and laboratory and physiologic data. Patients with AKI were subdivided according to its stages for survival analysis. **Results:** AKI was developed in 57.7% of patients. Multivariable logistic regression analysis revealed that development of septic AKI was associated with older age, pre-existing chronic kidney disease, use of angiotensin converting enzyme inhibitor or angiotensin receptor blocker, presence of shock, positive blood culture results, and low white blood cell and platelet counts. Hospital mortality was higher in AKI group. Crude Kaplan-Meier survival curves demonstrated reduced 30-day survival rate was significantly associated with the severity of acute kidney injury. **Conclusion:** The development of septic AKI was associated with poor clinical outcomes. Furthermore, the severity of AKI was associated with increased mortality.

**Key Words:** Acute kidney injury, mortality, risk factors, sepsis, septic shock

## INTRODUCTION

Acute kidney injury (AKI) is a common condition in critically ill patients and known to be associated with increased mortality.<sup>1,2</sup> Sepsis is the systemic inflammatory response to infection, and one of the most common contributing factors in AKI of critical illness.<sup>3</sup> Previous studies of septic AKI noted that about 60% patients with septic shock developed AKI and found a higher mortality and longer duration of hospital stay in patients with AKI compared with patients without AKI.<sup>4,5</sup>

Distinctive clinical features of AKI of septic etiology have been elucidated in recent studies,<sup>3-6</sup> which implies that a unique pathogenesis contributes to the development of septic AKI.<sup>7-10</sup> Although recent advances in understanding of pathophysiology of septic AKI have been achieved, because of its complexity and multifactorial character, effective management for septic AKI is limited to fluid re-

### © Copyright:

Yonsei University College of Medicine 2013

This is an Open Access article distributed under the terms of the Creative Commons Attribution Non-Commercial License (<http://creativecommons.org/licenses/by-nc/3.0>) which permits unrestricted non-commercial use, distribution, and reproduction in any medium, provided the original work is properly cited.

suscitation and antibiotics.

According to the risk, injury, failure, loss of function, and end-stage renal disease (RIFLE) criteria,<sup>11</sup> AKI is defined by serum creatinine levels and urine output. Although small changes in serum creatinine or acute reduction in urine output can be used in the diagnosis of AKI, these changes are often evident after the chance of effective management for renal protection has already passed. A previous prospective multicenter study reported the delayed onset of AKI of septic origin compared with AKI of non-septic origin.<sup>12</sup> The recognition of high-risk patients for development of septic AKI is important because early interventions may improve the clinical course.

Considering its high prevalence and clinical significance, the clinical aspects of AKI in sepsis and septic shock patients should be further elucidated. Therefore, the present study aimed to investigate the clinical characteristics of AKI in patients with sepsis and septic shock and clinical risk factors of AKI in patients with septic condition. In addition, whether AKI increased the mortality and, if so, how the severity of AKI affected the clinical outcomes was analyzed.

## MATERIALS AND METHODS

### Study population

We retrospectively analyzed the data of all the adult patients (>18 years of age) who visited the Emergency Department of Chonnam National University Hospital from January to December 2010 (Fig. 1). The protocol and consent forms of this study were reviewed and approved by the Institutional Review Board of Chonnam National University Hospital (CNUH-2012-114). Informed consent was exempted by the board because this was a retrospective study of collected data. Among 5680 patients, those with sepsis and septic shock on arrival at the hospital were enrolled in this study for further investigation. In the event of multiple admissions, only the initial admission was considered to avoid bias. Those with end stage renal disease (ESRD) on chronic renal replacement therapy were also excluded.

We recorded pulse rate (PR), mean arterial pressure (MAP), and laboratory findings at the diagnosis of sepsis or septic shock. Other variables included age, gender, body mass index (BMI), length of stay in intensive care unit (ICU) and hospital, and source of infection. To investigate the underlying condition that might affect the development of AKI, history of smoking and/or alcohol consumption, and pre-

existing diabetes mellitus (DM), hypertension (HTN), and chronic kidney disease (CKD), which was defined as estimated glomerular filtration rate (GFR) <60 milliliters per minute per 1.73 m<sup>2</sup> for more than 3 months, were checked. The abbreviated Modification of Diet in Renal Disease formula was used to estimate GFR in milliliters per minute per 1.73 m<sup>2</sup> from the baseline serum creatinine level.<sup>13</sup>

The use of agents that may alter renal function were reviewed, which included angiotensin converting enzyme inhibitor (ACEI) or angiotensin receptor blocker (ARB), statins, aminoglycosides, non-steroidal anti-inflammatory drugs (NSAIDs), and intravenous contrast media. Acute Physiologic and Chronic Health Evaluation (APACHE) III scores<sup>14</sup> at the diagnosis of sepsis or septic shock were calculated to assess the severity of illness.

Sepsis and septic shock was defined according to the American College of Chest Physicians/Society of Critical Care Medicine consensus conference criteria.<sup>15</sup> Among patients with a proven or suspected infection, those with the two or more systemic inflammatory response syndrome (SIRS) criteria were classified as having sepsis. Briefly, SIRS is manifested by the following features: 1) body temperature >38°C or <36°C; 2) PR >90 beats per minute; 3) respiratory rate >20 breaths per minute or PaCO<sub>2</sub> <32 mm Hg; and 4) white blood cell count >12000/mm<sup>3</sup>, <4000 mm<sup>3</sup> or >10% band forms. Among patients with sepsis, septic shock was defined as a systolic blood pressure <90 mm Hg or a reduction of ≥40 mm Hg from the baseline despite adequate fluid resuscitation.

### Definition and staging of AKI

Definition and staging of AKI was determined based on the worst of either creatinine or urine output criterion during hospital stay. Urine output was hourly measured during ICU stay. The cutoffs for AKI were based on the RIFLE criteria as meeting one of the following criteria: a decrease in GFR ≥25% or an increase in creatinine ≥50% (1.5 times) from baseline in a 48-hour time frame, or a reduction in urine output with documented oliguria of ≤0.5 mL/kg per hour for ≥6 hours. Patients were divided into three groups according to the RIFLE criteria (stage-1, -2 and -3).<sup>11</sup> When a patient's condition met the aforementioned criteria, the patient was classified as stage 1 AKI. In the case of more severe derangement, i.e., a decrease in GFR ≥50% or an increase in creatinine ≥100% (2 times) from baseline in a 48-hour time frame, or a reduction in urine output with documented oliguria of ≤0.5 mL/kg per hour for ≥12 hours,

stage 2 AKI was defined. Stage 3 AKI was defined as follows: a decrease in GFR  $\geq 75\%$  or an increase in creatinine  $\geq 200\%$  (3 times) from baseline in a 48-hour time frame, or a reduction in urine output with documented oliguria of  $\leq 0.3$  mL/kg per hour for  $\geq 24$  hours or anuria for  $\geq 12$  hours. Serum creatinine  $\geq 4.0$  mg/dL with acute increase of  $\geq 0.5$  mg/dL was also defined as stage 3 AKI.

### Statistical analysis

Analyses were performed using SPSS 18.0.0 (SPSS Inc., Chicago, IL, USA). In the event of missing data values, data were not replaced. Normally or near normally distributed variables are reported as mean with standard deviations and compared using Student's t-test, analysis of variance. Non-normally distributed continuous data are reported as medians with interquartile ranges and compared using Mann-Whitney U test and Kruskal-Wallis test. Categorical

data were reported as proportions and compared using Fisher's exact test or chi-square test where appropriate. Multi-variable logistic regression was used to assess the risk factors for the development of septic AKI. Calibration of the model was assessed by the Hosmer-Lemeshow goodness of fit statistic for significance ( $p > 0.05$ ). Odds ratios (OR) and 95% confidence intervals (CI) were calculated. A  $p$  value  $< 0.05$  was considered statistically significant.

## RESULTS

### Demographic data

Among 992 patients with sepsis and septic shock, 573 patients developed AKI (Table 1). According to the RIFLE criteria, 277 patients (48.3%) were subdivided into stage 1 AKI, 182 (31.8%) into stage 2 AKI, and 114 (18.9%) into stage 3

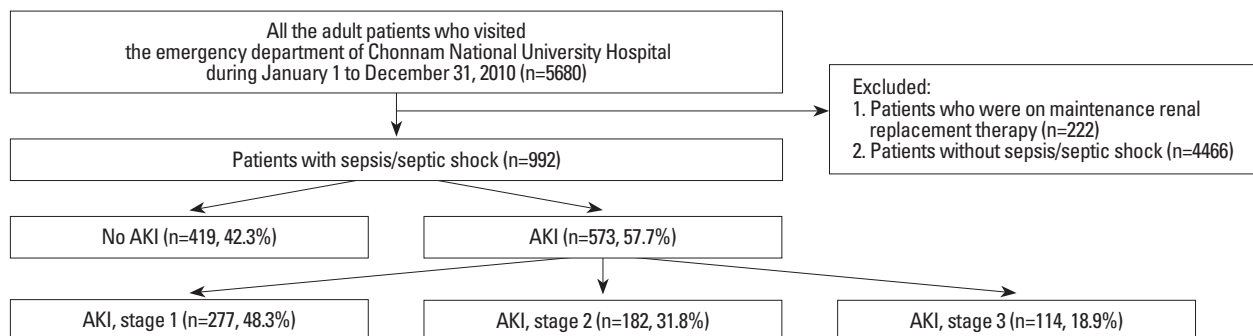
**Table 1. Demographic Data and Characteristics of Sepsis and Septic Shock Patients**

	No AKI (n=419, 42.3%)	AKI (n=573, 57.7%)	<i>p</i> value
Age (yrs)*	58.68 $\pm$ 18.32	66.75 $\pm$ 14.34	<0.001
Male gender	195 (46.5)	310 (54.1)	0.019
BMI, kg/m <sup>2</sup> *	22.84 $\pm$ 3.85	22.86 $\pm$ 4.15	0.939
Smoking history	148 (35.8)	230 (40.4)	0.145
Chronic alcohol consumption	110 (26.6)	176 (30.9)	0.143
DM	83 (20.1)	161 (28.3)	0.003
HTN	104 (25.2)	227 (39.9)	<0.001
Baseline creatinine, mg/dL*	0.70 $\pm$ 0.25	0.83 $\pm$ 0.48	<0.001
Baseline GFR, mL/min/1.73 m <sup>2</sup> *	118.54 $\pm$ 38.78	108.52 $\pm$ 49.05	0.002
Previous CKD	21 (5.0)	85 (14.8)	<0.001
Medications			
Intravenous contrast use	382 (92.5)	440 (77.6)	<0.001
Aminoglycosides	11 (2.7)	20 (3.5)	0.445
NSAIDs	11 (2.7)	18 (3.2)	0.630
Statins	32 (7.7)	77 (13.6)	0.004
ACEI or ARB	51 (12.3)	141 (24.9)	<0.001

AKI, acute kidney injury; BMI, body mass index; DM, diabetes mellitus; HTN, hypertension; GFR, Glomerular filtration rate; CKD, chronic kidney disease; NSAIDs, non-steroidal anti-inflammatory drugs; ACEI, angiotensin converting enzyme inhibitor; ARB, angiotensin receptor blocker.

Values are presented as n (%), unless otherwise indicated.

\*Mean $\pm$ SD.



**Fig. 1. Study design. AKI, acute kidney injury.**

AKI (Fig. 1). The renal replacement therapy was required in a total of 40 patients with AKI. Most patients (n=32) were stage 3 AKI, and the rest (n=8) were stage 2 AKI. The mean age of patients with septic AKI was significantly higher than that of patients without AKI ( $p<0.001$ ). Patients with AKI were more likely male ( $p=0.019$ ). DM ( $p=0.003$ ) and HTN ( $p<0.001$ ) were more frequently associated with the development of septic AKI, whereas there were no significant differences in BMI and history of smoking and alcohol consumption. Those who developed AKI had higher baseline serum creatinine levels ( $p<0.001$ ) and lower GFR ( $p=0.002$ ) than those who did not developed AKI. Accordingly, the prevalence of pre-existing CKD was significantly higher in AKI group ( $p<0.001$ ). Primary infection foci, such as heart, respiratory tract, urinary tract, or intra-abdomen, were investigated assuming upper urinary tract infection might show the higher frequency of AKI since it could directly damage kidneys. However, it did not affect the development of AKI (data not shown). Among medications that might affect the renal function, ACEI/ARB ( $p<0.001$ ) and statins ( $p=0.004$ ) were more frequently used in AKI group. Although the percentage of patients who used aminoglycosides and NSAIDs was higher in AKI group, there was no statistical significance. In contrast, patients who developed AKI were less

likely to be exposed to contrast media ( $p<0.001$ ). This might be explained by the differences in the baseline serum creatinine levels and GFRs between the groups with AKI and without AKI. It could be assumed that physicians were reluctant to use the clearly nephrotoxic agent in the evaluation of infection focus in patients with renal dysfunction.

### Laboratory findings

The patients who developed AKI showed more severe physiologic and laboratory disturbances (Table 2). The frequency of septic shock was significantly higher in the patients with AKI than were those without AKI ( $p<0.001$ ). Accordingly, MAP was lower in the AKI group ( $p<0.001$ ). Patients with AKI had a more severe illness with higher APACHE III scores than patients without AKI had ( $p<0.001$ ). White blood cell (WBC) ( $p=0.023$ ) and platelet ( $p=0.004$ ) counts were significantly lower in AKI group. The other physiologic and laboratory data collected in this study indicated the tendency of more evident clinical deterioration among patients who developed AKI, although this was not statistically significant. One notable finding is that positive blood culture results were more frequent in patients with AKI ( $p<0.001$ ). Gram negative bacilli ( $p<0.001$ ) and fungi ( $p=0.023$ ) were more frequently identified in the blood cultures

**Table 2. Physiologic and Laboratory Data on Admission**

	No AKI	AKI	<i>p</i> value
Presence of shock*	29 (6.9)	198 (34.6)	<0.001
APACHE III	48 (32-66)	55 (43-70)	<0.001
MAP, mm Hg	90.00 (83.33-96.67)	83.33 (73.33-96.67)	<0.001
Heart rate, bpm	82 (76-96)	84 (76-98)	0.474
pH	7.45 (7.41-7.49)	7.46 (7.41-7.49)	0.093
PaO <sub>2</sub> , mm Hg	83.70 (68.22-104.90)	83.70 (69.25-106.20)	0.716
PaCO <sub>2</sub> , mm Hg	31.3 (27.3-35.4)	31.3 (27.4-36.3)	0.745
Bicarbonate, mmol/L	21.8 (18.9-24.8)	22.0 (18.9-24.6)	0.503
WBC count per mm <sup>3</sup>	11350 (7.70-16.90)	11100 (7.40-15.00)	0.023
Hematocrit, %	35.1 (30.2-38.8)	35.0 (30.7-38.7)	0.665
Platelets count per mm <sup>3</sup>	196000 (124-275)	176000 (109-253)	0.004
Glucose, mg/dL	133 (105-173)	127 (105-158)	0.089
BUN, mg/dL	19.3 (12.5-31.9)	19.4 (12.5-29.1)	0.696
Total bilirubin, mg/dL	0.90 (0.66-1.32)	0.94 (0.66-1.42)	0.717
Positive blood cultures	39 (9.4)	116 (20.4)	<0.001
Gram negative bacilli	25 (6.0)	77 (13.5)	<0.001
Gram positive cocci	14 (3.4)	32 (5.6)	0.096
Fungi	0 (0)	7 (1.2)	0.023

AKI, acute kidney injury; APACHE III, Acute Physiology & Chronic health Evaluation III; MAP, mean arterial pressure; WBC, white blood cell; BUN, blood urea nitrogen.

Values are presented as median (interquartile range), unless otherwise indicated.

\*n (%).

from the patients who developed AKI.

### Risk factors for the development of AKI

Multivariable logistic regression analysis was performed to determine the risk factors for the development of septic AKI (Table 3). Variables, which were associated with  $p < 0.1$  in the univariate analysis and/or clinically plausible, were included in this model. After adjustment of confounders, the development of septic AKI was independently associated with age (OR 1.028 per every 1 year increment, 95% CI 1.016 to 1.041;  $p < 0.001$ ), pre-existing CKD (OR 2.398, 95% CI 1.301 to 4.420;  $p = 0.005$ ), use of ACEI or ARB (OR 2.064, 95% CI 1.214 to 3.510;  $p = 0.007$ ), presence of septic shock (OR 8.207, 95% CI 4.678 to 14.400;  $p = 0.001$ ), positive blood culture result (OR 1.777, 95% CI 1.123 to 2.812;  $p = 0.014$ ), and lower WBC and platelet counts (OR 0.971 per every  $1/\text{mm}^3$  decrement, 95% CI 0.949 to 0.993;  $p = 0.011$  and OR 0.995 per every  $1/\text{mm}^3$  decrement, 95% CI 0.997 to 1.000;  $p = 0.016$ , respectively). Other variables included in multivariate analysis, such as BMI, male sex, previous history of diabetes or hypertension, and medication history of statins, were not independently associated with the de-

velopment of septic AKI. Unexpectedly, APACHE III score was not statistically significant with septic AKI in this study.

### Clinical outcomes

The development of septic AKI was associated with poor clinical outcomes (Table 4). Hospital mortality was significantly higher in patients with AKI ( $p < 0.001$ ). Length of stay in the hospital and ICU was longer for patients who suffered AKI ( $p < 0.001$ ). We further investigated whether the severity of AKI affected the 30-day mortality (Fig. 2). Crude Kaplan-Meier survival curves demonstrated a reduced survival rate that was significantly associated with the severity of AKI (log-rank test,  $p < 0.001$ ).

## DISCUSSION

Among 992 patients with sepsis and septic shock, 573 (57.7%) developed AKI defined by RIFLE classification. The risk factors for AKI in septic patients were older age, presence of previous CKD, presence of shock, positive blood culture results, previous medication of ACEI/ARB, and

**Table 3.** Risk Factors for Development of AKI in Patients with Sepsis and Septic Shock

	OR	95% CI	<i>p</i> value
Age (for every yr)	1.028	1.016-1.041	<0.001
Male sex	1.311	0.955-1.800	0.094
BMI	0.993	0.954-1.034	0.749
Presence of CKD	2.398	1.301-4.420	0.005
Presence of DM	1.083	0.743-1.576	0.679
Presence of HTN	1.131	0.760-1.685	0.544
Use of ACEI or ARB	2.064	1.214-3.510	0.007
Use of statins	0.731	0.394-1.357	0.321
Presence of shock	8.207	4.678-14.400	<0.001
Positive blood culture result	1.777	1.123-2.812	0.014
WBC counts per $\text{mm}^3$	0.971	0.949-0.993	0.011
Platelet counts per $\text{mm}^3$	0.998	0.997-1.000	0.016
APACHE III score	0.995	0.986-1.003	0.207

AKI, acute kidney injury; OR, odds ratio; CI, confidence interval; BMI, body mass index; CKD, chronic kidney disease; DM, diabetes mellitus; HTN, hypertension; ACEI, angiotensin converting enzyme inhibitor; ARB, angiotensin receptor blocker; WBC, white blood count; APACHE III, Acute Physiology & Chronic health Evaluation III.

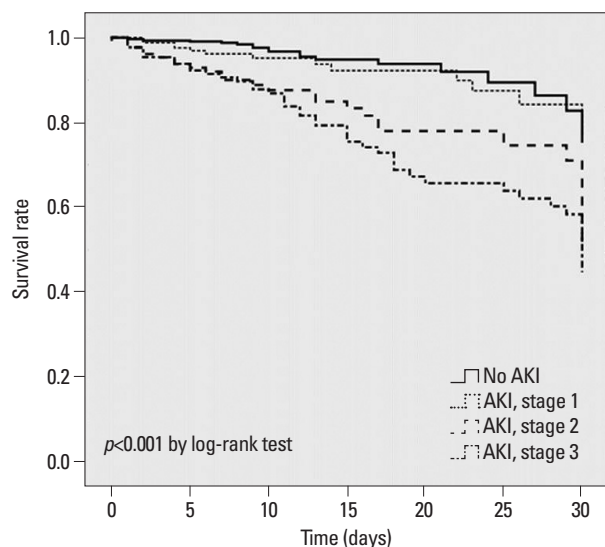
**Table 4.** Clinical Outcomes

	No AKI	AKI	<i>p</i> value
Hospital mortality*	12 (2.9)	94 (16.4)	<0.001
Hospital LOS, days	9.78±7.97	16.25±19.63	<0.001
ICU LOS, days	0.51±2.90	2.98±8.26	<0.001

AKI, acute kidney injury; LOS, length of stay; ICU, intensive care unit.

Values are presented as mean±SD, unless otherwise indicated.

\*n (%).



**Fig. 2.** Survival curves for 30 days. Kaplan-Meier survival for 30 days by AKI stages in patients with sepsis and septic shock demonstrated reduced survival rate was significantly associated with the severity of AKI ( $p < 0.001$  by log-rank test). AKI, acute kidney injury.

lower WBC and platelet counts. The development and severity of AKI was associated with the increased mortality and length of hospital/ICU stay. Additionally, crude 30-day survival decreased as the severity of AKI increased.

AKI is more frequently observed in patients with sepsis and septic shock than in patients with other conditions.<sup>3</sup> The present study showed that among 992 patients with sepsis and septic shock, 573 (57.7%) developed AKI defined by RIFLE classification. These findings are consistent with the previous data. An observational cohort study of 390 patients with septic shock in a single center ICU for about 2 years reported nearly 2 out of 3 patients experiencing AKI.<sup>4</sup> In a recent retrospective multicenter study of 4532 patients with septic shock, a similar percentage of patients (64.4%) developed AKI.<sup>5</sup>

In this study, AKI was more frequently accompanied by older age, and male or female predominance was not observed. It is controversial whether these demographic differences actually affect the development of septic AKI. In a previous study conducted in Australia, septic AKI was more prevalent in the older patients.<sup>16</sup> In the present study, multivariable logistic regression analysis showed that sex predilection was not a risk factor for the development of septic AKI. Another study of AKI in septic shock, however, conducted in Germany, showed male dominance in the development of AKI in patients with severe sepsis and septic shock,<sup>5</sup> where older patients were more likely to experience AKI in this study. In contrast, no significant differences were observed in the age and frequency of male sex between the

patient groups with or without AKI in a more recent study.<sup>4</sup> Despite some discrepancies among studies, more careful approaches to kidney protection are required in the management of older aged patients with sepsis and septic shock.

We proved that pre-existing CKD is one of the risk factors for the development of AKI, which was also found in previous studies. In a previous study, which enrolled the patients with severe sepsis and septic shock, the frequency of pre-existing CKD was significantly higher among those who developed AKI, although multivariable analysis for the risk factors of septic AKI was not conducted in that study.<sup>7</sup> However, another study, which only analyzed patients with septic shock, noted decreased baseline GFR as an independent risk factor for development of AKI in the population.<sup>5</sup> Our results indicate that a history of CKD is one risk factor among patients with severe sepsis and septic shock, as well as non-severe sepsis.

The pathophysiology of septic AKI, although still not firmly established, is considered different from AKI of other etiologies. It is generally understood that systemic hypotension would deteriorate renal blood flow, which might be a major cause of the renal injury in septic patients. Other studies of septic AKI documented the longer duration of hypotension before hemodynamic resuscitation was associated with higher incidence of AKI.<sup>5,17</sup> In accordance of these findings, we noted that the presence of shock was one of the risk factors of septic AKI.

High incidence of AKI in patients with sepsis, but without shock, however, cannot be explained with decreased renal blood flow alone. In their experimental animal study, Langenberg, et al.,<sup>10</sup> found AKI in septic shock mainly affected by dysfunction of the renal vascular bed rather than systemic hypotension and renal hypoperfusion. In their study, fluid resuscitation and maintenance of renal perfusion did not prevent the deterioration of GFR.<sup>10</sup> In contrast, recovery from sepsis resulted in the normalization of GFR.<sup>10</sup> This implies the development of AKI involves inflammatory/immunologic mechanisms. Interestingly, in this study, a higher percentage of positive blood culture results were observed in patients with AKI. A similar finding was previously observed.<sup>4</sup> It could be postulated that uncontrolled infection would lead to more intense immunologic responses, resulting in renal dysfunction. The present study showed that gram negative bacteremia was more prevalent in patients with AKI. Gram negative bacilli are well-known sources of the endotoxin, which exerts nephrotoxicity. Our findings further support the notion that the development of septic AKI is

not solely affected by hemodynamic instability. Whether the early and adequate administration of antibiotics prevents the development of septic AKI needs to be further elucidated.

Considering the pathogenesis of septic AKI, it is not surprising the use of ACEI/ARB affects renal injury in septic patients.<sup>18,19</sup> ACEI/ARB are known to decrease the intraglomerular pressure in normal subjects. This action mechanism might be hazardous in sepsis and septic shock, in such conditions where renal blood flow are prone to decrease, resulting in further decrements of intraglomerular pressure and GFR.

An interesting finding is low WBC and platelet counts were associated with septic AKI. Although higher WBC counts were observed in the septic AKI group when compared the patients with septic and nonseptic AKI in a previous study,<sup>16</sup> lower WBC counts were strongly associated with the AKI among septic patients in our study. Moreover, low platelet counts in septic AKI patients are consistently observed in the previous studies on septic AKI.<sup>3,4,6</sup> A possible explanation is a more severe inflammatory response might contribute to the development of AKI. It is known that the secretion of pro-inflammatory cytokines, such as IL-1 $\beta$ , TNF- $\alpha$ , and IL-6, is increased in the initial stage of sepsis, followed by activation of anti-inflammatory mechanisms.<sup>20-22</sup> In a recent study from an experimental sepsis model, the pattern of serum cytokine levels was associated initial leukopenia and prolonged thrombocytopenia.<sup>23</sup> Therefore, AKI in sepsis is not solely affected by hemodynamic changes, lower WBC and platelet counts might indicate more severe immunologic responses subsequently leading to AKI.

Our data clearly suggest the crude 30-day mortality increases as the severity of AKI increases in patients with sepsis and septic shock. It has been elucidated from other previous studies that AKI remains one of the independent risk factors of adverse clinical outcomes even after the adjustment of covariates.<sup>3,6</sup> Because the development of septic AKI is linked to the increased mortality, patients at a high-risk for septic AKI should be carefully assessed so that nephrotoxic agents or procedures that could be harmful to renal function could be avoided at the initial stage of sepsis management.

There are limitations to our study. First, this study is a retrospective and is potentially susceptible to several forms of bias. Second, our data were collected in a single university hospital. The incidence and severity of diseases might be biased. Third, duration of follow-up was short. We could

not assess patients with more severe AKI, such as those who might be classified to loss or ESRD stage according to RIFLE criteria. We also could not investigate the effect of septic AKI on long-term survival. Despite these demerits, our study has some advantages. First, we reviewed a relatively large number of medical records. Second, we revealed various risk factors associated with the development of septic AKI, some of which are of novel. The possible link between gram negative bacteremia and septic AKI was, to our best knowledge, not previously reported. However, the underlying mechanism and specific micro-organism identified by blood culture were not investigated in this study, which remains to be further elucidated.

In conclusion, AKI developed in more than half of patients with sepsis and septic shock. Old age, pre-existing CKD, presence of shock, positive blood culture results, use of ACEI/ARB, and low WBC and platelet counts were associated with an increased risk for the development of septic AKI. The development of septic AKI adversely affected clinical outcomes. Moreover, the severity of AKI was associated with increased short-term mortality.

## ACKNOWLEDGEMENTS

This research was supported by a grant from the Ministry of Science & Technology (MoST)/Korea Science & Engineering Foundation (KOSEF) (2010-0021808) and by the Korea Science and Engineering Foundation through the Medical Research Center for Gene Regulation grant (2012-0009448) at Chonnam National University.

## REFERENCES

1. Cartin-Ceba R, Haugen EN, Iscimen R, Trillo-Alvarez C, Juncos L, Gajic O. Evaluation of "Loss" and "End stage renal disease" after acute kidney injury defined by the Risk, Injury, Failure, Loss and ESRD classification in critically ill patients. *Intensive Care Med* 2009;35:2087-95.
2. Hoste EA, Schurgers M. Epidemiology of acute kidney injury: how big is the problem? *Crit Care Med* 2008;36(4 Suppl):S146-51.
3. Bagshaw SM, Uchino S, Bellomo R, Morimatsu H, Morgera S, Schetz M, et al. Septic acute kidney injury in critically ill patients: clinical characteristics and outcomes. *Clin J Am Soc Nephrol* 2007;2:431-9.
4. Platakis M, Kashani K, Cabello-Garza J, Maldonado F, Kashyap R, Kor DJ, et al. Predictors of acute kidney injury in septic shock patients: an observational cohort study. *Clin J Am Soc Nephrol* 2011;6:1744-51.

5. Bagshaw SM, Lapinsky S, Dial S, Arabi Y, Dodek P, Wood G, et al. Acute kidney injury in septic shock: clinical outcomes and impact of duration of hypotension prior to initiation of antimicrobial therapy. *Intensive Care Med* 2009;35:871-81.
6. Oppert M, Engel C, Brunkhorst FM, Bogatsch H, Reinhart K, Frei U, et al. Acute renal failure in patients with severe sepsis and septic shock--a significant independent risk factor for mortality: results from the German Prevalence Study. *Nephrol Dial Transplant* 2008;23:904-9.
7. Langenberg C, Wan L, Egi M, May CN, Bellomo R. Renal blood flow in experimental septic acute renal failure. *Kidney Int* 2006;69:1996-2002.
8. Langenberg C, Wan L, Bagshaw SM, Egi M, May CN, Bellomo R. Urinary biochemistry in experimental septic acute renal failure. *Nephrol Dial Transplant* 2006;21:3389-97.
9. Brenner M, Schaer GL, Mallory DL, Suffredini AF, Parrillo JE. Detection of renal blood flow abnormalities in septic and critically ill patients using a newly designed indwelling thermodilution renal vein catheter. *Chest* 1990;98:170-9.
10. Langenberg C, Wan L, Egi M, May CN, Bellomo R. Renal blood flow and function during recovery from experimental septic acute kidney injury. *Intensive Care Med* 2007;33:1614-8.
11. Bellomo R, Ronco C, Kellum JA, Mehta RL, Palevsky P; Acute Dialysis Quality Initiative workgroup. Acute renal failure - definition, outcome measures, animal models, fluid therapy and information technology needs: the Second International Consensus Conference of the Acute Dialysis Quality Initiative (ADQI) Group. *Crit Care* 2004;8:R204-12.
12. Neveu H, Kleinknecht D, Brivet F, Loirat P, Landais P. Prognostic factors in acute renal failure due to sepsis. Results of a prospective multicentre study. The French Study Group on Acute Renal Failure. *Nephrol Dial Transplant* 1996;11:293-9.
13. Levey AS, Coresh J, Greene T, Stevens LA, Zhang YL, Hendriksen S, et al. Using standardized serum creatinine values in the modification of diet in renal disease study equation for estimating glomerular filtration rate. *Ann Intern Med* 2006;145:247-54.
14. Knaus W, Wagner D, Draper E. APACHE III study design: analytic plan for evaluation of severity and outcome in intensive care unit patients. Development of APACHE. *Crit Care Med* 1989;17 (12 Pt 2):S181-5.
15. Bone RC, Sibbald WJ, Sprung CL. The ACCP-SCCM consensus conference on sepsis and organ failure. *Chest* 1992;101:1481-3.
16. Bagshaw SM, George C, Bellomo R; ANZICS Database Management Committee. Early acute kidney injury and sepsis: a multicentre evaluation. *Crit Care* 2008;12:R47.
17. Kumar A, Roberts D, Wood KE, Light B, Parrillo JE, Sharma S, et al. Duration of hypotension before initiation of effective antimicrobial therapy is the critical determinant of survival in human septic shock. *Crit Care Med* 2006;34:1589-96.
18. Bentley ML, Corwin HL, Dasta J. Drug-induced acute kidney injury in the critically ill adult: recognition and prevention strategies. *Crit Care Med* 2010;38(6 Suppl):S169-74.
19. Pannu N, Nadim MK. An overview of drug-induced acute kidney injury. *Crit Care Med* 2008;36(4 Suppl):S216-23.
20. Tracey KJ, Beutler B, Lowry SF, Merryweather J, Wolpe S, Mil-sark IW, et al. Shock and tissue injury induced by recombinant human cachectin. *Science* 1986;234:470-4.
21. Okusawa S, Gelfand JA, Ikejima T, Connolly RJ, Dinarello CA. Interleukin 1 induces a shock-like state in rabbits. Synergism with tumor necrosis factor and the effect of cyclooxygenase inhibition. *J Clin Invest* 1988;81:1162-72.
22. Nechemia-Arbely Y, Barkan D, Pizov G, Shriki A, Rose-John S, Galun E, et al. IL-6/IL-6R axis plays a critical role in acute kidney injury. *J Am Soc Nephrol* 2008;19:1106-15.
23. Yu DH, Kim B, Park J. Pathophysiologic and immunologic changes in a canine endotoxemia over a period of 24 hours. *J Vet Med Sci* 2012;74:537-44.