

Original Article



Gender-related Difference in Clinical Outcome of the Patient with Atrial Fibrillation after Radiofrequency Catheter Ablation

Seung-Young Roh , MD¹, Jaemin Shim , MD, PhD², Kwang-No Lee , MD²,
Jinhee Ahn , MD³, Dong-Hyeok Kim , MD⁴, Dae In Lee , MD⁵,
Jong-Il Choi , MD, PhD², and Young-Hoon Kim , MD, PhD²

OPEN ACCESS

Received: Oct 25, 2017

Revised: Feb 20, 2018

Accepted: Mar 14, 2018

Correspondence to

Young-Hoon Kim, MD, PhD

Division of Cardiology, Korea University College of Medicine and Korea University Anam Hospital, 73, Incheon-ro, Seongbuk-gu, Seoul 02841, Korea.

E-mail: yhkmd@unitel.co.kr

Copyright © 2018. The Korean Society of Cardiology

This is an Open Access article distributed under the terms of the Creative Commons Attribution Non-Commercial License (<https://creativecommons.org/licenses/by-nc/4.0>) which permits unrestricted noncommercial use, distribution, and reproduction in any medium, provided the original work is properly cited.

ORCID iDs

Seung-Young Roh
<https://orcid.org/0000-0002-0854-9079>

Jaemin Shim
<https://orcid.org/0000-0001-8251-1522>

Kwang-No Lee
<https://orcid.org/0000-0002-7430-415X>

Jinhee Ahn
<https://orcid.org/0000-0001-6179-1254>

Dong-Hyeok Kim
<https://orcid.org/0000-0002-6339-8496>

Dae In Lee
<https://orcid.org/0000-0001-8088-3007>

Jong-Il Choi
<https://orcid.org/0000-0001-6617-508X>

Young-Hoon Kim
<https://orcid.org/0000-0002-4254-647X>

¹Division of Cardiology, Dongguk University College of Medicine and Dongguk University Medical Center, Goyang, Korea

²Division of Cardiology, Korea University College of Medicine and Korea University Anam Hospital, Seoul, Korea

³Division of Cardiology, Pusan National University Hospital, Busan, Korea

⁴Division of Cardiology, Sejong General Hospital, Bucheon, Korea

⁵Division of Cardiology, Chungbuk National University Hospital, Cheongju, Korea

ABSTRACT

Background and Objectives: Previous studies provided controversial result about gender differences in the clinical outcome after radiofrequency catheter ablation (RFCA) for atrial fibrillation (AF). We assessed pure difference after adjustment of referral bias.

Methods: The clinical outcomes including freedom from AF/atrial tachycardia (AT) recurrence after RFCA were compared between women and men in 1:1 confounding factor matching with age, AF type, periods since diagnosis (± 12 months), and procedure era (± 12 months). Subgroup analysis was performed in categories defined by AF type and age of 55 (mean menopausal age of Asian women).

Results: Total 1,875 patients with AF underwent 2,307 RFCA between January 1998 and May 2014 in a single center. Total 367 women (19.6%, 59 \pm 10 years) who had undergone first ablation were included. Women had larger left atrial diameter index (26 \pm 4 vs. 23 \pm 4 mm/m²; p<0.001) and higher peri-procedural complications (9.2% vs. 4.9%; p=0.030) compared to men. The freedom from AF/AT recurrence after RFCA was not different between both groups (71% vs. 76%; log-rank p=0.131, mean follow-up of 55 months). Women with non-paroxysmal AF (PAF) had significantly worse outcome (54% vs. 69%; p=0.014), especially in subgroup with age \leq 55 (48% vs. 71%; p=0.010). In multivariate analysis, female gender was an independent predictor of recurrence in subgroup with non-PAF and age \leq 55 (hazard ratio [HR], 2.539; 95% confidence interval [CI], 1.112–5.801; p=0.027).

Conclusions: The clinical outcome after RFCA was not different between both genders regardless of referral bias. However, the gender difference became evident in patients under 55 years with non-PAF.

Keywords: Atrial fibrillation; Gender; Catheter ablation

Conflict of Interest

The authors have no financial conflicts of interest.

Author Contributions

Conceptualization: Roh SY, Shim J; Data curation: Lee KN, Ahn J, Kim DH, Lee DI; Formal analysis: Shim J, Ahn J, Lee DI; Investigation: Roh SY, Choi JI; Methodology: Choi JI; Supervision: Shim J, Choi JI, Kim YH; Writing - original draft: Roh SY; Writing - review & editing: Kim YH.

INTRODUCTION

The prevalence of atrial fibrillation (AF) at all ages is higher in men compared to women.¹⁾ However, in general population, the absolute number of women who have AF was similar in men and women because of the longer life expectancy in women.²⁾ Several studies have investigated the gender differences in the epidemiology, presentation and prognosis of AF.³⁻⁵⁾ Women with AF are more likely to develop stroke and are at a higher risk of mortality than men.^{6,7)} AF was also related with cardiovascular mortality, especially more in women.⁸⁾ Large population cohort study showed that AF is a much greater risk factor of cardiovascular death in women about twice.⁹⁾ AF and mortality were shown to be associated with an odds ratio for death of 1.5 in men and 1.9 in women according to Framingham cohort study.⁶⁾ In addition, AF in women is known to be associated with longer episode, higher ventricular rates and impaired quality of life.^{4,10,11)} Therefore, maintenance of sinus rhythm (SR) can be more helpful to women. Radiofrequency catheter ablation (RFCA) for rhythm control appears to be an effective alternative in women with drug refractory AF.

Recent studies demonstrated women had controversial outcome of rhythm control by drug or RFCA compared to men.¹²⁻¹⁴⁾ The known main cause of disparity is not related to hormone but social characteristics of woman. Woman or physician to treat woman often prefer medical treatment than invasive procedure including catheter ablation. So undertreated period is usually longer in women than men.^{13,15)} Time lag from diagnosis to RFCA for AF may attenuate the effectiveness of the procedure. Therefore, pure gender-related difference is difficult to be confirmed due to referral bias. We hypothesized that clinical long-term outcome after RFCA for AF was different between women and men with similar AF history.

METHODS**Study population**

A total of 1,875 patients underwent 2,307 consecutive RFCA for AF at Korea University Anam Hospital between June 1998 and May 2014 (**Figure 1**). Patients with highly symptomatic drug refractory AF were selected for ablation. Among them, 379 patients (20.2%) were women, and 367 patients (19.5%) who underwent first ablation were included in this study. Twelve patients who underwent first ablation in other hospital were excluded. Three hundred sixty-seven men were selected as control to 1:1 match the study group by age (± 1 year), type of AF (paroxysmal or non-paroxysmal), and duration of AF before index procedure (± 2 years). We considered index procedure era as matching criteria to decrease bias related with ablation technology development.

Definition of variables and outcome

Duration of AF was calculated by the period between the time of the first diagnosis and index procedure. It was assessed by confirming previous medical record. Definition of clinical type of AF (paroxysmal or non-paroxysmal) was followed the American Heart Association (AHA)/ American College of Cardiology (ACC) recommendations.¹⁶⁾ Atrial arrhythmia recurrence was defined with documentation of atrial arrhythmia (>30 seconds) including AF or atrial tachycardia (AT). However, we did not consider atrial arrhythmia within blanking period as recurrence. Blanking period was defined as 3 months after procedure. Procedural success was no atrial arrhythmia recurrence during follow-up period with or without anti-arrhythmic drug (AAD). Procedure-related (within 1 week) complication were defined as hematoma

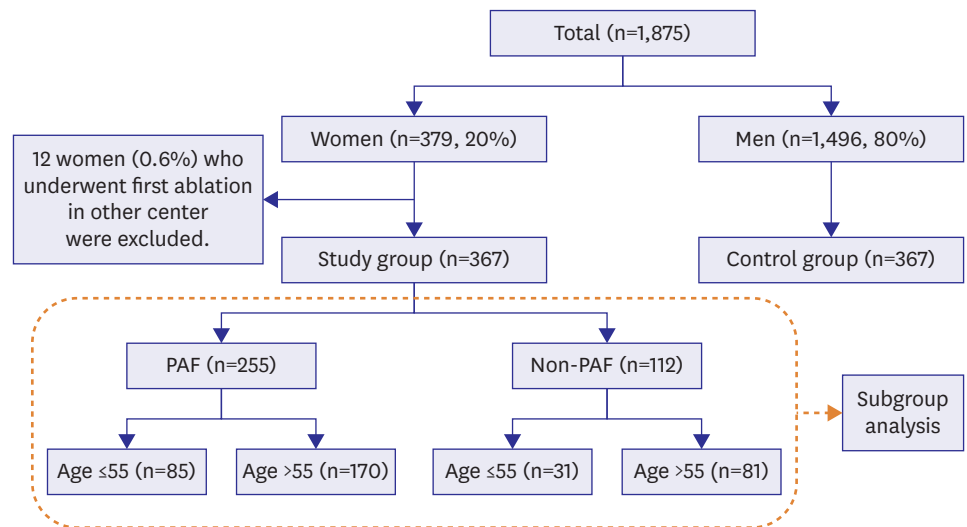


Figure 1. Schematic representation of study population as the gender, type of AF, and age. The number of patients in each category and their proportional representation are shown. Clinical outcomes after ablation of subgroups in dotted line were analyzed.

AF = atrial fibrillation; PAF = paroxysmal atrial fibrillation.

requiring transfusion, arteriovenous fistula requiring operation, dissection of major vessel, periprocedural cerebrovascular accident (CVA), tamponade, shock or death, etc. Primary outcome is atrial arrhythmia recurrence. Secondary outcome is thromboembolic event.

Peri-procedural management and ablation strategy for AF

AADs were discontinued in more than 5 half-lives and amiodarone was discontinued at 1 month prior to procedure. Anticoagulation was continued for at least 2 months after ablation in all patients regardless of CHA₂DS₂-VASc score. Transesophageal echocardiography was performed in all patients within 24 hours immediately before procedure to rule out the presence of left atrial (LA) thrombi. All the patients underwent electrophysiology study and ablation after written informed consent was obtained.

Our ablation procedure has evolved over the 15-year period of this study. We performed focal ablation at the pulmonary vein (PV) guided by Lasso catheter (Biosense Webster, Inc., Irvine, CA, USA) from 1998 to 2004. Non-contact mapping-guided PV ablation since 2005. We have started to perform circumferential ablation of 4 PVs guided by NavX (St. Jude Medical Inc., St. Paul, MN, USA) since 2007. The end point of PV isolation (PVI) was elimination of PV potentials on the 10-bipole ring-shaped catheter at each PV. Since 2009, subsequent ablation strategy differed according to the clinical type of AF. In case of patient with paroxysmal AF (PAF), non-PV triggers of sustained AF were evaluated and targeted after PVI. To identify triggers initiating AF, multiple electrical cardioversion was performed subsequently under isoproterenol (10–20 µg/min) infusion. Triggers were evaluated if they caused re-initiation of sustained or non-sustained AF within 2 minutes after repetitive cardioversion. After PVI, same protocol was repeated at least 3 times, to identify non-PV foci initiating AF. In case of patient with non-PAF, additional substrate modification was performed after PVI. If AF was sustained after PVI, 3-dimensional complex fractionated atrial electrograms (CFAEs) of LA were mapped during 6 seconds of AF with NavX software. Ablation was performed using the CFAE map until AF termination or organized to an AT, or the fractionated potential in LA was eliminated. The CFAE in the right atrial (RA) was targeted for ablation if AF persisted after LA

CFAE ablation. If AF was organized to AT during PVI or CFAEs guided ablation, activation and entrainment mapping guided ablation were performed. If AF/AT was terminated by ablation, inducibility of sustained AF/AT by pacing was evaluated in patients with non-PAF. If SR is not restored after ablation as mentioned above, patient was cardioverted with internal or external direct-current electrical cardioversion. The endpoint of procedure for PAF was to eliminate all triggers including PV. Endpoint of procedure for non-PAF was termination of AF/AT and no induction of sustained atrial arrhythmia by pacing protocol.

Follow-up

Every patient visited outpatient clinics 2 weeks after discharge and every 2–4 weeks during the initial 3 months to monitor the occurrence of complications and early recurrence. Patient visited every 3 months after the blanking period. Electrocardiography was routinely checked during each follow-up at outpatient clinics. 24-hours Holter monitoring or 7-days event recorder was performed at 1, 3, 6, 9, and 12 and then every 6 months after discharge in asymptomatic patients. In case of patients with implanted intracardiac device, the recurrence was checked by interrogation of device. If patients experienced tachycardia-related symptom without documentation, it was confirmed by additional Holter or event recorder. During blanking period, prescription of AADs was at the discretion of physicians. Repeat ablation for recurred AF/AT was not allowed during the blanking period. AAD was discontinued after the end time of the blanking period.

Subgroup analysis

Subgroup analysis was performed in categories defined by clinical AF type and age. We set up criteria of age as 55 to evaluate hormonal effect. It has been known that mean age at natural menopause in Asian woman is 49 years and hormone did not affect human body at age over than 55.¹⁷⁾ Clinical outcome was estimated in each 4 subgroups.

Statistical analysis

Continuous variables are expressed as a mean standard deviation. Categorical variables are reported as counts with percentage. An independent Student's t-test was used to compare continuous variables between women and men groups. Categorical variables were compared by a χ^2 test or Fisher's exact test. Time to AF/AT recurrence was calculated using the Kaplan-Meier analysis with comparisons between both genders performed by log-rank statistics. To analyze independent predictors of AF recurrence after ablation and clinical outcomes, multivariable Cox regression model was used. Confounders adjusted in the multivariable model included age, sex, LA diameter index, and history of heart failure (HF). The hazard ratio (HR) and 95% confidence interval (CI) were presented in the results. A p value <0.05 was considered statistically significant. Statistical analyses were performed using SPSS 20.0 software package (SPSS Inc., Chicago, IL, USA).

RESULTS

Baseline characteristics and echocardiographic parameter

Patient characteristics and echocardiographic parameters according to gender are shown in **Table 1**. Mean age of both groups was 59±10 years. All study population were Asian. PAF was present in 69% of overall patients and 31% had non-PAF. Women were more likely to have history of thyroid disease (7.9% vs. 3.8%; p=0.013) and sick sinus syndrome (5.2% vs. 1.1%; p=0.002) compared to men. Women were more likely on class III AAD than men. Women

Table 1. Clinical characteristics of patients according to gender

Characteristics	All (n=734)	Women (n=367)	Men (n=367)	p value
Age (years)	59±10	59±10	59±10	0.871
BMI (kg/m ²)	25±3	25±4	25±3	0.688
BSA (m ²)	1.7±0.2	1.6±0.1	1.8±0.1	<0.001
Duration of AF (months)	58±57	57±57	60±58	0.457
Type of AF (%)				0.532
Paroxysmal	510 (69)	255 (69)	255 (69)	
Non-paroxysmal	224 (31)	112 (31)	112 (31)	
Comorbidity (%)				
Hypertension	257 (35)	133 (36)	124 (34)	0.268
Diabetes	64 (9)	29 (8)	35 (10)	0.257
Previous stroke	45 (6)	28 (8)	17 (5)	0.062
History of HF	37 (5)	22 (6)	15 (4)	0.156
Coronary artery disease	26 (4)	10 (3)	16 (4)	0.159
Valvular heart disease*	38 (5)	23 (6)	15 (4)	0.122
Chronic kidney disease	11 (2)	3 (1)	8 (2)	0.112
Hypertrophic cardiomyopathy	9 (1.2)	3 (0.8)	6 (1.6)	0.253
Dilated cardiomyopathy	2 (0.3)	1 (0.3)	1 (0.3)	0.750
History of thyroid disease†	43 (5.9)	29 (7.9)	14 (3.8)	0.013
Sinus node dysfunction‡	23 (3.1)	19 (5.2)	4 (1.1)	0.002
CHA ₂ DS ₂ -VASC score (not including female-gender)				0.411
0	301 (41)	149 (41)	152 (41)	
1	214 (29)	107 (29)	107 (29)	
2	136 (19)	65 (18)	71 (19)	
3	59 (8)	30 (8)	29 (8)	
≥4	24 (3)	13 (4)	7 (2)	
Previously ineffective AAD	1.1±0.5	1.0±0.5	1.0±0.5	0.101
Class I AAD	282 (38)	132 (36)	150 (41)	0.098
Sotalol	15 (2)	7 (1.9)	8 (2)	0.504
Amiodarone or dronedarone	188 (26)	102 (28)	86 (23)	0.049
Echocardiographic data				
Left ventricular ejection fraction (%)	56±6	55±6	56±6	0.613
LA diameter (mm)	41±6	41±6	41±6	0.761
LA diameter index (mm/m ²)	24±4	26±4	23±4	<0.001
E/E'	10±4	11±4	9±3	<0.001
LAA velocity (cm/s)				
Forward	48±22	49±20	46±23	0.030
Backward	48±22	50±22	47±23	0.084

Values are given as number (percent) or mean±SD.

AAD = anti-arrhythmic drug; AF = atrial fibrillation; BMI = body mass index; BSA = body surface area; HF = heart failure; LA = left atrial; LAA = left atrial appendage; SD = standard deviation.

*Valvular heart disease included moderate degree stenosis or regurgitation of any cardiac valves; †Thyroid disease was defined as hyper- or hypothyroidism, thyroid malignancy; ‡Sinus node dysfunction included sinus dysfunction requiring permanent pacing therapy or tachybrady syndrome with sinus pause of ≥4 seconds.

tended to have more prior CVA history, but no significant difference was found. No significant difference was found between groups in terms of other cardiovascular comorbidities including the presence of coronary artery disease. CHA₂DS₂-VASC score (calculated excluding 1 point of female gender) was not different between both groups. Mean duration of AF and the number of previously ineffective AAD were similar between both groups. Mean LVEF (55% vs. 56%; p=0.613) and non-adjusting mean LA anteroposterior diameter (40.9 vs. 41.0 mm; p=0.761) did not differ between both groups. However, LA diameter index (26±4 vs. 23±4 mm/m²) and measured E/E' (11±4 vs. 10±3) were significantly higher in women than men (both p<0.001).

Procedure related parameters and outcome after index procedure

The mean procedure time, fluoroscopic time and total radiofrequency (RF) delivery time were not significantly different (Table 2). Non-PV trigger revealed by mentioned protocol was noted in 10% of women and 12% of men (p=0.724).

Table 2. Procedural features and outcome

Characteristics	All (n=734)	Women (n=367)	Men (n=367)	p value
Total procedure time (minutes)	273±121	281±144	266±92	0.150
RF delivery time (minutes)	105±56	107±75	106±56	0.833
Mean fluoroscopic time (minutes)	70±36	71±36	69±37	0.607
Non-PV foci (%)	77 (11)	35 (10)	42 (12)	0.724
Additional substrate modification				
PMI line	80 (11)	46 (13)	34 (10)	0.098
Roof line	96 (14)	51 (14)	45 (13)	0.297
LA anterior line	13 (2)	10 (3)	3 (1)	0.045
CTI	355 (50)	173 (49)	182 (51)	0.262
LA CFAE	124 (17)	64 (18)	60 (17)	0.390
RA CFAE	50 (7)	27 (8)	23 (7)	0.334
SVC	44 (6)	17 (5)	27 (8)	0.079
Complications (%)	51 (7)	34 (9)	17 (5)	0.019
Outcome				
Procedural success rate with or without AAD	542 (74)	262 (71)	280 (76)	0.077
PAF	405 (79)	202 (79)	203 (80)	0.500
Non-paroxysmal	137 (59)	60 (54)	77 (69)	0.028
Mean follow-up period (months)	55±38	55±38	55±39	0.965

Values are given as number (percent) or mean±SD.

AAAD = anti-arrhythmic drug; CFAE = complex fractionated atrial electrogram; CTI = cavotricuspid isthmus; LA = left atrial; PAF = paroxysmal atrial fibrillation; PMI = perimitral isthmus; PV = pulmonary vein; RA = right atrial; RF = radiofrequency; SD = standard deviation; SVC = superior vena cava.

The number of patients who underwent additional substrate modification to PVI was not different (31% vs. 35%; $p=0.201$). Successful block of peri-mitral isthmus (13% vs. 10%; $p=0.098$), roof (14% vs. 13%; $p=0.297$), and cavotricuspid isthmus (49% vs. 51%, $p=0.262$) were achieved without difference between both groups.

Complication

Procedure related complication rate was significantly higher in women group (9.2% vs. 4.9%; $p=0.030$) (**Figure 2**). The most common complication is cardiac tamponade. Its occurrence rate was significantly higher in women (6.5% vs. 2.7%; $p=0.021$). All these patients were treated by percutaneous drainage or surgical repair. Second common complication was vascular access related ones including dissection, arteriovenous fistula and hematoma requiring transfusion. It did not significantly differ between women and men (1.6% vs. 0.8%; $p=0.253$). The occurrence rates of bradycardia requiring temporary or permanent pacing

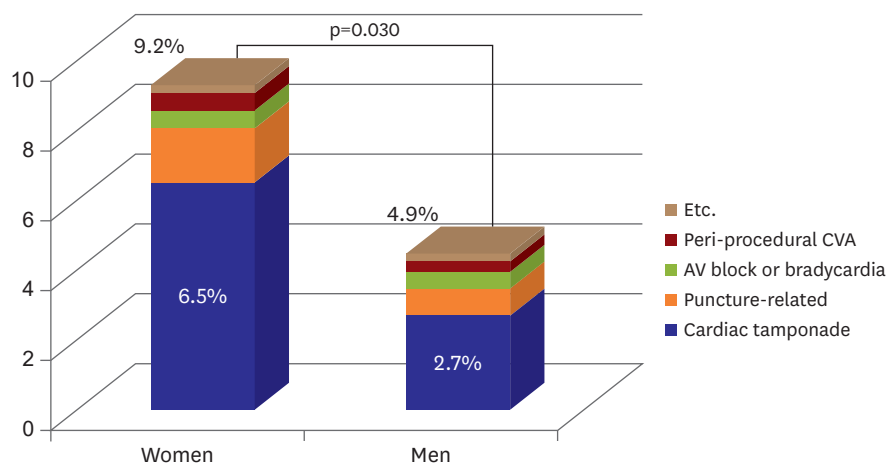


Figure 2. Incidence of procedure related complication for women versus men. The incidence of complication, especially cardiac tamponade was significantly higher in women than men (9.2% vs. 4.9%; $p=0.030$). AV = atrioventricular; CVA = cerebrovascular accident.

(n=4), peri-procedural (within 30 days after procedure) CVA (n=3), gastrointestinal paralysis (n=1), and phrenic nerve palsy (n=1) were not related to gender.

Clinical outcome

Mean follow-up period after index ablation was 55 ± 38 months. The patients without recurrence of atrial arrhythmia was 405 (79.4%) after ablation for PAF and 133 (59.3%) after ablation for non-PAF during follow-up period. Successful ablation rate without recurrence during follow-up was not significantly different between both groups. The 76% of men and 71% of women were arrhythmia-free without AAD (HR, 1.12; 95% CI, 0.82–1.53; $p=0.478$). Kaplan-Meier curve of arrhythmia-free survival in overall women and men group is shown in **Figure 3**.

An estimated recurrence-free survival in all subgroup is shown in **Figure 4**. The women with non-PAF or age ≤ 55 years were more likely to suffer from a recurrence than men (log-rank $p=0.019$ in non-PAF subgroup, $p=0.005$ in age ≤ 55 subgroup). Among the patient with PAF, freedom from atrial arrhythmia recurrence rate was not different regardless of age ($p=0.943$). There was no gender-related difference in subgroup of age >55 years ($p=0.912$). The women with PAF showed no significant difference of AF/AT recurrence compared to men in age >55 years subgroup ($p=0.197$). In age >55 subgroup with PAF, outcome tended to be worse in women but not statistically different ($p=0.052$). The women had worse clinical outcome than men in age ≤ 55 years with non-PAF subgroup ($p=0.019$), but not in age >55 years subgroup ($p=0.176$).

The multivariable Cox regression analysis showed that female gender was the independent predictor for recurrence after catheter ablation in age ≤ 55 years subgroup with non-PAF (HR, 2.539; 95% CI, 1.112–5.801; $p=0.027$). In contrast, it was not the independent predictor for recurrence in age >55 subgroup with non-PAF (HR, 0.734; 95% CI, 0.458–1.176; $p=0.196$), age ≤ 55 subgroup with PAF (HR, 1.974; 95% CI, 0.934–4.170; $p=0.075$) and >55 subgroup with PAF (HR, 0.733; 95% CI, 0.431–1.246; $p=0.251$). We analyzed characteristics of non-PAF subgroup with age ≤ 55 years. Women in that subgroup have higher left atrial diameter (LAD) index (27 ± 4 vs. 23 ± 3 ; $p<0.001$) and E of E' ratio (11 ± 4 vs. 8 ± 2 ; $p=0.002$) compared to men (**Table 3**).

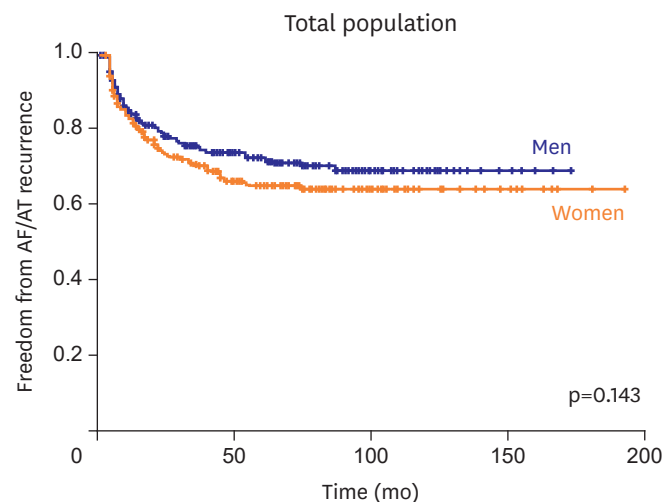


Figure 3. The overall freedom from AF/AT recurrence after catheter ablation for men versus women. Recurrence rate was not significantly different (log-rank $p=0.143$). AF = atrial fibrillation; AT = atrial tachycardia.

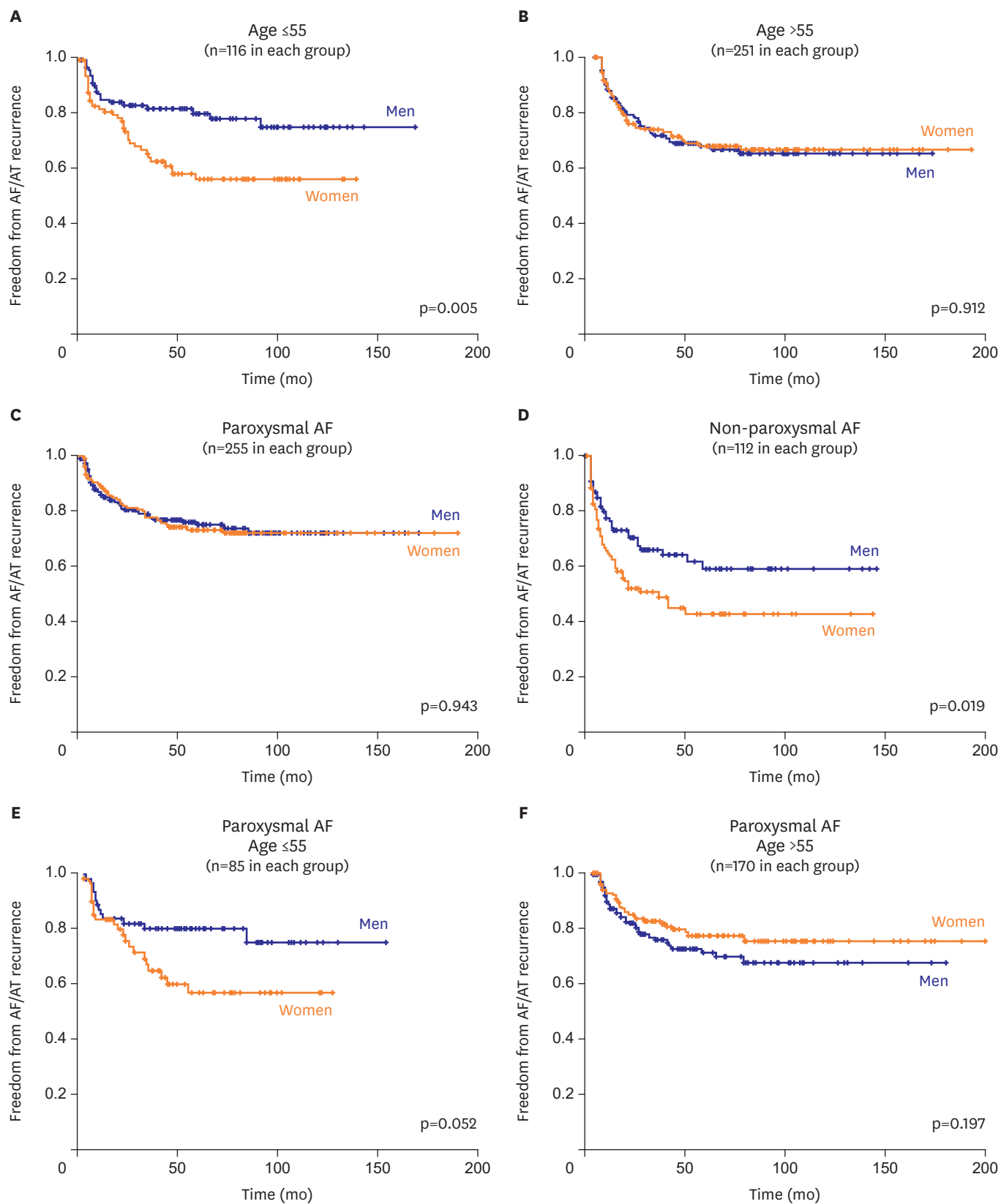


Figure 4. The Kaplan-Meier curve of freedom from AF/AT recurrence in subgroup analysis. (A, B) Subgroup by criteria of age 55. (C, D) Subgroup by criteria of AF type. (E, F) PAF subgroup by criteria of age 55. (G, H) Non-PAF subgroup by criteria of age 55. AF = atrial fibrillation; AT = atrial tachycardia; PAF = paroxysmal atrial fibrillation. (continued to the next page)

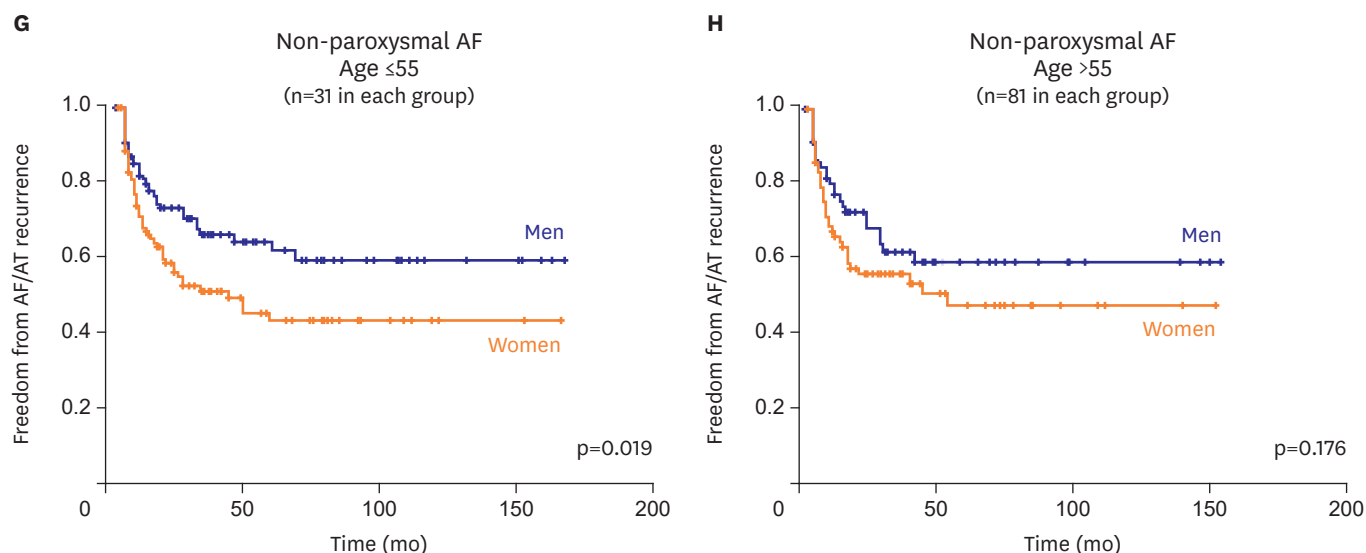


Figure 4. (Continued) The Kaplan-Meier curve of freedom from AF/AT recurrence in subgroup analysis. (A, B) Subgroup by criteria of age 55. (C, D) Subgroup by criteria of AF type. (E, F) PAF subgroup by criteria of age 55. (G, H) Non-PAF subgroup by criteria of age 55. AF = atrial fibrillation; AT = atrial tachycardia; PAF = paroxysmal atrial fibrillation.

Table 3. Clinical characteristics of patients in subgroup of age ≤55 with non-PAF

Characteristics	All (n=62)	Women (n=31)	Men (n=31)	p value
Age (years)	49±6	49±6	49±6	0.968
BMI (kg/m ²)	25±4	25±4	25±3	0.774
BSA (m ²)	1.7±0.2	1.6±0.1	1.9±0.1	<0.001
History of AF (months)	53±3	46±37	50±41	0.248
Comorbidity (%)				
Hypertension	12 (19)	4 (13)	8 (26)	0.168
Diabetes mellitus	5 (8)	1 (3)	4 (13)	0.177
Previous stroke	1 (2)	0	1 (3)	0.062
History of HF	6 (10)	5 (16)	1 (3)	0.098
Coronary artery disease	1 (2)	0	1 (3)	0.500
Valvular heart disease*	2 (3)	2 (6)	0	0.122
Chronic kidney disease	0	0	0	
Hypertrophic cardiomyopathy	0	0	0	
Dilated cardiomyopathy	0	0	0	
History of thyroid disease [†]	5 (8)	3 (10)	2 (7)	0.500
Sinus node dysfunction [‡]	0	0	0	
Previously ineffective AAD numbers	1.0±0.6	1.1±0.1	1.1±0.3	0.261
Echocardiographic data				
Left ventricular ejection fraction (%)	54±7	54±8	54±6	0.872
LA diameter (mm)	43±6	44±6	43±5	0.554
LA diameter index (mm/m ²)	25±4	26±4	23±4	<0.001
E/E'	9±4	11±4	8±2	0.002

Values are given as number (percent) or mean±SD.

AAD = anti-arrhythmic drug; AF = atrial fibrillation; BMI = body mass index; BSA = body surface area; HF = heart failure; LA = left atrial; PAF = paroxysmal atrial fibrillation; SD = standard deviation.

*Valvular heart disease included moderate degree stenosis or regurgitation of any cardiac valves; [†]Thyroid disease was defined as hyper- or hypothyroidism, thyroid malignancy; [‡]Sinus node dysfunction included sinus dysfunction requiring permanent pacing therapy or tachybrady syndrome with sinus pause of ≥4 seconds.

Thromboembolic event, bleeding event

In total follow-up period regardless of recurrence, several ischemic strokes occurred. Three were women and one was man (0.8% vs. 0.3%; p=0.127). Two women and man were on recurrence status but one woman was not. Recurrence of atrial arrhythmia was not documented in one woman at the time of stroke event.

DISCUSSION

In this study, we found that 1) women had higher LAD index and E/E' ratio compared to men with matched history of AF and similar number of failed AADs; 2) clinical outcome after single procedure did not differ between both gender groups; and 3) women with non-PAF, especially in age ≤ 55 years has worse outcome compared to men. Many previous papers concluded that gender difference of clinical outcome after RFCA for AF was related with referral bias. We ruled out impact of referral bias by matching to presented pure gender difference. We selected men group as control to 1:1 match the study group by age, type of AF, history of AF, and index procedure era.

Women are more likely to experience more symptomatic episodes, significantly higher ventricular rates and impaired quality of life.^{10,11} Women with AF have worse outcome compared to men for some reason. Stroke Prevention in Atrial Fibrillation (SPAF) trial showed female gender was independent predictor of stroke.¹⁸ Anticoagulation and Risk Factors in Atrial Fibrillation (ATRIA) trial demonstrated significantly higher risk of thromboembolism in women.⁷ AF was also related with cardiovascular mortality, especially more in women. The risk of death in non-valvular AF in the Framingham cohort showed that AF was associated with an odds ratio for death of 1.5 in men and 1.9 in women.⁸ The Copenhagen City Heart Study as large population cohort study showed that AF was a much more pronounced risk factor for cardiovascular death in women about twice.^{9,19} As this result, woman with AF suffers from worse prognosis than man.

Several papers showed controversial result about gender-related impact to clinical outcome after RFCA for AF. Forleo et al.¹³ demonstrated that clinical outcome did not differ even though women were older with significantly higher LA diameter. The ratio of freedom from atrial arrhythmia recurrence was 82.7% in men and 83.1% in women during mean follow-up of 23 months. Patel et al.¹⁵ evaluated clinical outcome and complication of referred 3,265 women who underwent PV antrum isolation. Referred women were older and had a higher prevalence of stroke and hypertension than men. After 24 months of mean follow-up, women had lower success rates than men (68.5% vs. 77.5%). Forleo et al.¹³ and Patel et al.¹⁵ reported the longer untreated period, more failed AAD pre-ablation in women group. This referral bias impacted the results. We included all referred woman patients who underwent first ablation in single center in this study. However, men were selected as control to 1:1 match with women by above mentioned criteria to minimize referral bias or undertreated period gap. As a result, numbers of failed AAD, CHA₂DS₂-VASc score and most of comorbidity between both groups were similar. Procedure or ablation time were not different. Finally, long-term outcome after single procedure was not different between both groups.

We divided the consecutive population into 4 subgroups based on clinical type of AF and age, in order to analyze the effects of hormone on the outcome. Clinical outcome discrepancy between both genders is evident in subgroup younger than 55 years or subgroup with non-PAF. Characteristics related to RFCA in women have been reported as small vessel size, more epicardial fat, higher peri-procedural complication rate. The results of our study cannot be explained even considering these factors.

In this study, women had higher rate of cardiac tamponade and puncture related complication compared to men as shown. Such complications may influence procedural acute success and outcome. Other studies reported women had higher risk for developing

cardiac tamponade.²⁰⁻²²⁾ The mechanism was not obvious yet. Small body surface area (BSA), lower LA volume, thinner LA wall, and higher incidence of atrial septal aneurysm in women were suggested as cause.²³⁾²⁴⁾ In this study, measured LA size was not different between both groups but other cause was not explored. The difference of complication rate between both genders was not observed in each subgroup.

The gender difference in diastolic function of the heart might be related to these results. HF with preserved EF is more prevalent in women than men, but the basis for this difference remains unclear. Incidences of arterial stiffness and concentric left ventricular remodeling were associated with the development of HF in women greater than in men despite the preserved EF.²⁵⁾ This study did not show any differences in comorbidity, whereas E/E' was observed to be significantly higher in women. However, this gender difference is associated with cardiovascular aging. As aging is known to decrease the diastolic heart function in women, it is difficult to explain the difference in prognosis in those under the age of 55 with non-PAF.

Some studies have found gender-related difference in arrhythmia impacted by hormone.²⁶⁻²⁸⁾ Gender differences in the subgroup with non-PAF were more pronounced than in the subgroup with PAF. This is thought to be related to the substrate formation as a mechanism to sustain AF. It was the same in non-PAF group of less than 55 years that had shown a large difference of outcome. LA diameter index was greater in women despite the period since diagnosis was the same. Mechanism of the difference in the substrate formation between men and women is still unclear. Some studies noted the role of estrogen. Estrogen in menopausal women raises the risk of AF. There are experimental research that the estrogen affects aspect of the cardiac arrhythmia or cardiac electricity profile.²⁷⁾²⁸⁾ However causation is not determined yet and still debatable. It seems further studies will be required on the relationship between estrogen and the substrate.

In many cardiovascular diseases, female gender is known to have a protective role. In the similar age, men show significantly higher prevalence of AF compared to women. It is questionable that the result of this study can impact on the selection of candidates for catheter ablation. Catheter ablation had already confirmed the effectiveness of the treatment for drug refractory symptomatic AF by many prior studies.²⁹⁾³⁰⁾ Our study had shown the catheter ablation was effective in women who are 56 years old or older, particularly in those with PAF as same as in men. Catheter ablation is good choice to create a better outcome if the medical treatment is not effective to such patients. The efficacy of the procedure is higher and the procedure related complications was lower in younger age. Therefore, it is necessary to improve the long-term prognosis by ablation. However, decision for ablation should be carefully considered to young women, especially if that etiology is not clear. In these patients, prevalence of AF is low compared to men except for valvular AF.

AF in these patients has a possibility related with genetic variant or myocardial disease. Before making the decision for the procedure in young women with AF, the evaluation of cause should be considered.

The retrospective design was main limitation of the study. Although the matching was performed to reduce referral bias but the potential for selection bias still exists. In order to reduce such bias, all women were included in the study subjects who had undergone ablation without screening of the investigator. In order to select the man matching at the

ratio of 1:1, first, all men who were suitable to the criteria per one woman were sorted. Then, randomly matching is by a computer. This method was possible as men were 4–5 times more than women patients. This study was focused on the outcome of RFCA for AF, not the overall gender difference in AF. The mechanism of gender difference in AF incidence might be different from the outcome of RFCA. There is also the uncertainty of the AF duration. Because the criteria for AF duration were set to the time of diagnosis, there may be a difference in period from the prior symptom onset year of AF.

The reasons for the long-undertreated period of women are thought to be 2. First, it is the preference of medication therapy after diagnosed rather than procedural treatment, and the secondly, it is that delayed diagnosis by being mistaken the symptoms as pre-diagnostic stress, emotional problems or menopausal symptoms. The first reason can be reflected for the applied AF duration in this paper, but it is difficult to reflect in the second reason. Since the exact duration of AF is impossible to measure based on the beginning of the symptoms, the AF duration was calculated on the basis of the diagnosis.

In respect to the treatment group selection, since the patients from long time ago were included so that it was possible to show differences from the current profile where the procedural experiences had been increased with technological advancement. Prior to 2004, most of the patients were with PAF and it is considered to have no significant impact on the difference from non-PAF Patients were classified to subgroup by age to observe the effects of hormone. However, such classification had great individual variation. In addition, the age was taken as record at the time to receive a procedure, but the arrhythmia substrate has been formed for relatively long time, which implicates there is the higher the probability of mixed in the intermediate group.

The clinical outcome after RFCA was not different between both genders regardless of referral bias. However, the gender difference became evident in patients under 55 years with non-PAF.

REFERENCES

1. Chugh SS, Havmoeller R, Narayanan K, et al. Worldwide epidemiology of atrial fibrillation: a Global Burden of Disease 2010 Study. *Circulation* 2014;129:837-47.
[PUBMED](#) | [CROSSREF](#)
2. Piccini JP, Hammill BG, Sinner MF, et al. Incidence and prevalence of atrial fibrillation and associated mortality among Medicare beneficiaries, 1993–2007. *Circ Cardiovasc Qual Outcomes* 2012;5:85-93.
[PUBMED](#) | [CROSSREF](#)
3. Potpara TS, Marinkovic JM, Polovina MM, et al. Gender-related differences in presentation, treatment and long-term outcome in patients with first-diagnosed atrial fibrillation and structurally normal heart: the Belgrade atrial fibrillation study. *Int J Cardiol* 2012;161:39-44.
[PUBMED](#) | [CROSSREF](#)
4. Ong L, Irvine J, Nolan R, et al. Gender differences and quality of life in atrial fibrillation: the mediating role of depression. *J Psychosom Res* 2006;61:769-74.
[PUBMED](#) | [CROSSREF](#)
5. Salam AM, AlBinali HA, Al-Mulla AW, et al. Women hospitalized with atrial fibrillation: gender differences, trends and outcome from a 20-year registry in a Middle Eastern country (1991–2010). *Int J Cardiol* 2013;168:975-80.
[PUBMED](#) | [CROSSREF](#)
6. Wang TJ, Massaro JM, Levy D, et al. A risk score for predicting stroke or death in individuals with new-onset atrial fibrillation in the community: the Framingham Heart Study. *JAMA* 2003;290:1049-56.
[PUBMED](#) | [CROSSREF](#)

7. Fang MC, Singer DE, Chang Y, et al. Gender differences in the risk of ischemic stroke and peripheral embolism in atrial fibrillation: the AnTicoagulation and Risk factors In Atrial fibrillation (ATRIA) study. *Circulation* 2005;112:1687-91.
[PUBMED](#) | [CROSSREF](#)
8. Wolf PA, Mitchell JB, Baker CS, Kannel WB, D'Agostino RB. Impact of atrial fibrillation on mortality, stroke, and medical costs. *Arch Intern Med* 1998;158:229-34.
[PUBMED](#) | [CROSSREF](#)
9. Friberg J, Scharling H, Gadsboll N, Truelsen T, Jensen GB, Copenhagen City Heart S. Comparison of the impact of atrial fibrillation on the risk of stroke and cardiovascular death in women versus men (The Copenhagen City Heart Study). *Am J Cardiol* 2004;94:889-94.
[PUBMED](#) | [CROSSREF](#)
10. Humphries KH, Kerr CR, Connolly SJ, et al. New-onset atrial fibrillation: sex differences in presentation, treatment, and outcome. *Circulation* 2001;103:2365-70.
[PUBMED](#) | [CROSSREF](#)
11. Paquette M, Roy D, Talajic M, et al. Role of gender and personality on quality-of-life impairment in intermittent atrial fibrillation. *Am J Cardiol* 2000;86:764-8.
[PUBMED](#) | [CROSSREF](#)
12. Balk EM, Garlitski AC, Alsheikh-Ali AA, Terasawa T, Chung M, Ip S. Predictors of atrial fibrillation recurrence after radiofrequency catheter ablation: a systematic review. *J Cardiovasc Electrophysiol* 2010;21:1208-16.
[PUBMED](#) | [CROSSREF](#)
13. Forleo GB, Tondo C, De Luca L, et al. Gender-related differences in catheter ablation of atrial fibrillation. *Europace* 2007;9:613-20.
[PUBMED](#) | [CROSSREF](#)
14. Rienstra M, Van Veldhuisen DJ, Hagens VE, et al. Gender-related differences in rhythm control treatment in persistent atrial fibrillation: data of the Rate Control Versus Electrical Cardioversion (RACE) study. *J Am Coll Cardiol* 2005;46:1298-306.
[PUBMED](#) | [CROSSREF](#)
15. Patel D, Mohanty P, Di Biase L, et al. Outcomes and complications of catheter ablation for atrial fibrillation in females. *Heart Rhythm* 2010;7:167-72.
[PUBMED](#) | [CROSSREF](#)
16. January CT, Wann LS, Alpert JS, et al. 2014 AHA/ACC/HRS guideline for the management of patients with atrial fibrillation: executive summary: a report of the American College of Cardiology/American Heart Association Task Force on practice guidelines and the Heart Rhythm Society. *Circulation* 2014;130:2071-104.
[PUBMED](#) | [CROSSREF](#)
17. Schoenaker DA, Jackson CA, Rowlands JV, Mishra GD. Socioeconomic position, lifestyle factors and age at natural menopause: a systematic review and meta-analyses of studies across six continents. *Int J Epidemiol* 2014;43:1542-62.
[PUBMED](#) | [CROSSREF](#)
18. Hart RG, Pearce LA, McBride R, Rothbart RM, Asinger RW. Factors associated with ischemic stroke during aspirin therapy in atrial fibrillation: analysis of 2012 participants in the SPAF I-III clinical trials. The Stroke Prevention in Atrial Fibrillation (SPAF) Investigators. *Stroke* 1999;30:1223-9.
[PUBMED](#) | [CROSSREF](#)
19. Benjamin EJ, Wolf PA, D'Agostino RB, Silbershatz H, Kannel WB, Levy D. Impact of atrial fibrillation on the risk of death: the Framingham Heart Study. *Circulation* 1998;98:946-52.
[PUBMED](#) | [CROSSREF](#)
20. Santangeli P, di Biase L, Pelargonio G, Natale A. Outcome of invasive electrophysiological procedures and gender: are males and females the same? *J Cardiovasc Electrophysiol* 2011;22:605-12.
[PUBMED](#) | [CROSSREF](#)
21. Michowitz Y, Rahkovich M, Oral H, et al. Effects of sex on the incidence of cardiac tamponade after catheter ablation of atrial fibrillation: results from a worldwide survey in 34 943 atrial fibrillation ablation procedures. *Circ Arrhythm Electrophysiol* 2014;7:274-80.
[PUBMED](#) | [CROSSREF](#)
22. Shah RU, Freeman JV, Shilane D, Wang PJ, Go AS, Hlatky MA. Procedural complications, rehospitalizations, and repeat procedures after catheter ablation for atrial fibrillation. *J Am Coll Cardiol* 2012;59:143-9.
[PUBMED](#) | [CROSSREF](#)
23. Dewland TA, Wintermark M, Vaysman A, et al. Use of computed tomography to identify atrial fibrillation associated differences in left atrial wall thickness and density. *Pacing Clin Electrophysiol* 2013;36:55-62.
[PUBMED](#) | [CROSSREF](#)

24. Olivares-Reyes A, Chan S, Lazar EJ, Bandlamudi K, Narla V, Ong K. Atrial septal aneurysm: a new classification in two hundred five adults. *J Am Soc Echocardiogr* 1997;10:644-56.
[PUBMED](#) | [CROSSREF](#)
25. Coutinho T, Borlaug BA, Pelikka PA, Turner ST, Kullo JJ. Sex differences in arterial stiffness and ventricular-arterial interactions. *J Am Coll Cardiol* 2013;61:96-103.
[PUBMED](#) | [CROSSREF](#)
26. Perez MV, Wang PJ, Larson JC, et al. Effects of postmenopausal hormone therapy on incident atrial fibrillation: the Women's Health Initiative randomized controlled trials. *Circ Arrhythm Electrophysiol* 2012;5:1108-16.
[PUBMED](#) | [CROSSREF](#)
27. Saito T, Ciobotaru A, Bopassa JC, Toro L, Stefani E, Eghbali M. Estrogen contributes to gender differences in mouse ventricular repolarization. *Circ Res* 2009;105:343-52.
[PUBMED](#) | [CROSSREF](#)
28. Zhang Y, Ouyang P, Post WS, et al. Sex-steroid hormones and electrocardiographic QT-interval duration: findings from the third National Health and Nutrition Examination Survey and the Multi-Ethnic Study of Atherosclerosis. *Am J Epidemiol* 2011;174:403-11.
[PUBMED](#) | [CROSSREF](#)
29. Wyse DG, Waldo AL, DiMarco JP, et al. A comparison of rate control and rhythm control in patients with atrial fibrillation. *N Engl J Med* 2002;347:1825-33.
[PUBMED](#) | [CROSSREF](#)
30. Van Gelder IC, Hagens VE, Bosker HA, et al. A comparison of rate control and rhythm control in patients with recurrent persistent atrial fibrillation. *N Engl J Med* 2002;347:1834-40.
[PUBMED](#) | [CROSSREF](#)