

OK - 432

가

가 (Fig. 1B).

, CT, MRI, OK - 432

OK - 432 (Picibanil Chugai Pharmaceutical, Tokyo, Japan)

38 cc

CT

1

(chyle) (lipoprotein)

(triglyceride)

(Fig. 2).

OK - 432

1.2 mg

20 cc

, 2

1

33

4

CT

가 3×2×2 cm

(Fig. 3A). 2

1.8×1

×2 cm

CT

가

4.6×2.8×4.8 cm

(Fig. 3B).

가

(Fig. 1A).

CT

가

(posterior cervical space)

1964 Steinberg가

2003

15

(1).

가 가

1

2

2006 12 28

2007 3 19

(2). 가
 가 CD31, CD34, factor , (keratin)
 (3, 4). 가
 (8).
 가 3 - 4 cm
 (60%)
 (15%), (7%),
 (2.5%), (1.5%)
 (2 - 3%), (1.0 - 1.5%) (5).
 (6).
 가
 CT가 . CT 가
 , Ethiodol 가
 CT
 (7). 가
 가
 가
 T- 가
 3:1 가
 (chylomicron) 가
 1:1 가
 (chylothorax) 가
 (1). 가



Fig. 2. The contents of thoracic duct cyst after needle aspiration. Typical yellowish milky secretion is seen in the syringe.

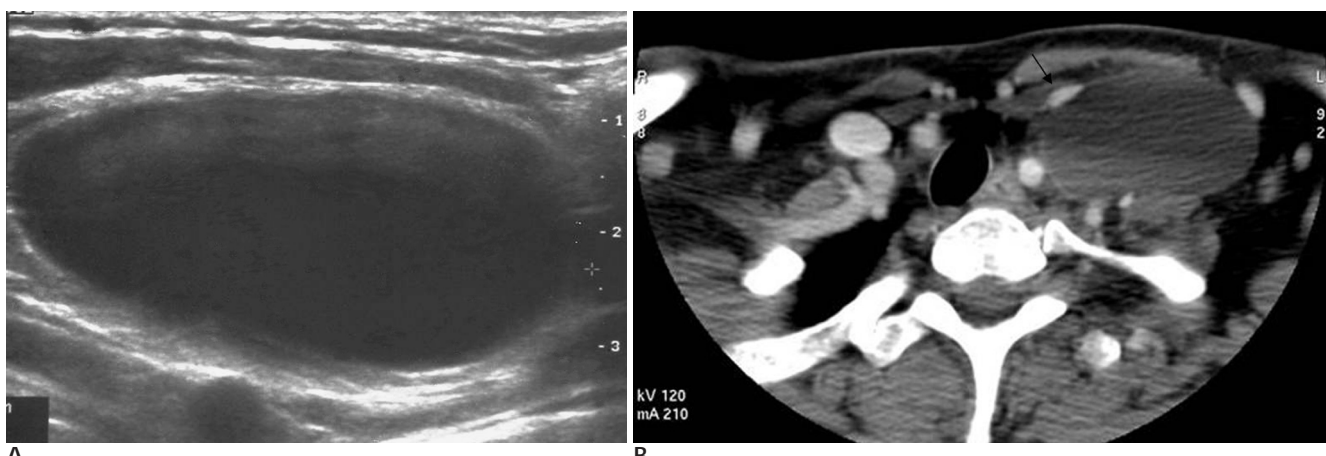


Fig. 1. A 33-year-old woman with a thoracic duct cyst in left supraclavicular and posterior cervical area.
 A. Initial neck ultrasonogram shows well circumscribed oval shaped hypoechoic mass.
 B. Initial contrast-enhanced CT demonstrates non-enhanced homogenous low attenuation mass in left supraclavicular and posterior cervical area with anterior-medial displacement of internal jugular vein (arrow).

Cervical Thoracic Duct Cyst: A Case Report¹

Sang Hyun Park, M.D., Jong Kyu Han, M.D., Chi Kyu Lee, M.D.², Sung Sik Jo, M.D.,
Hyung Hwan Kim, M.D., Won Kyung Bae, M.D., Il Yung Kim, M.D.

¹Department of Radiology, Chunan Hospital, Soonchunhyang University

²Department of Otolaryngology, Chunan Hospital, Soonchunhyang University

Thoracic duct cysts are uncommon lesions that most commonly occur in the abdominal and thoracic portion of the thoracic duct: the cervical portion is the rarest location. The main causes of thoracic duct cyst are surgical injuries such as neck dissection and blunt trauma. We report here on a rare case of spontaneous cervical thoracic duct cyst that was noted on ultrasonography and CT. The thoracic duct cyst was confirmed by fine needle aspiration and it was treated by sclerotherapy.

Index words : Ultrasound (US)
Sclerotherapy
Mediastinum
Thoracic duct

Address reprint requests to : Jong Kyu Han, M.D., Department of Radiology, Chunan Hospital, Soonchunhyang University
23-20 Bongmyung-dong, Chunan 330-721, Korea.
Tel. 82-41-570-3515 Fax. 82-41-579-9026 E-mail: mdhjk@schch.co.kr