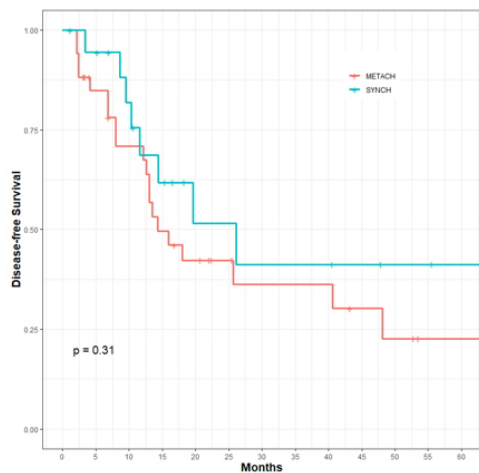
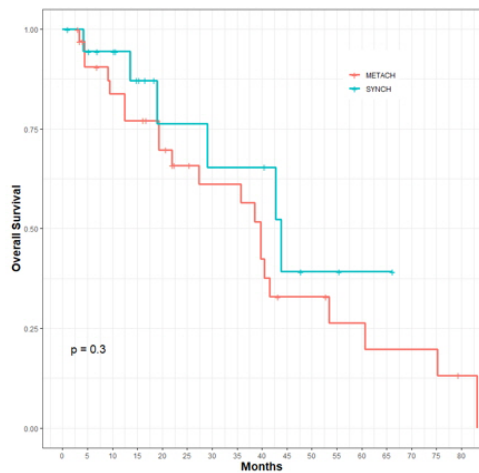
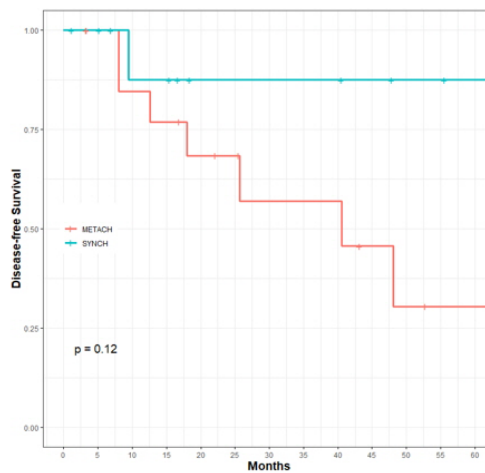
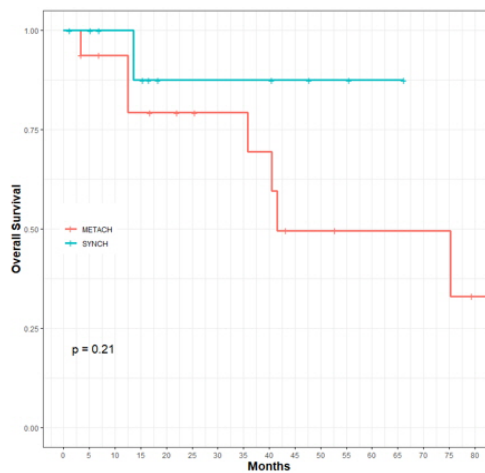


(A) All patients



(B) M1a patients



Supplementary Fig. 4. Overall and disease-free survival of patients with synchronous paraaortic metastasis and primary cancer. (A) All patients and (B) M1a group. SYNCH, synchronous metastasis with primary cancer; METACH, metachronous metastasis with primary cancer; M1a group, patients with isolated paraaortic lymph node metastasis.