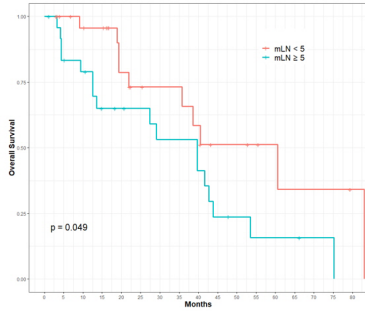
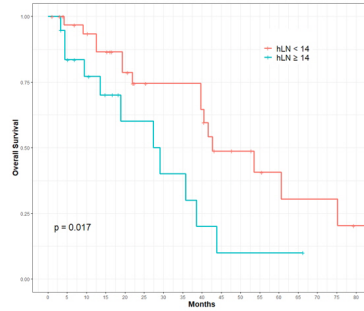


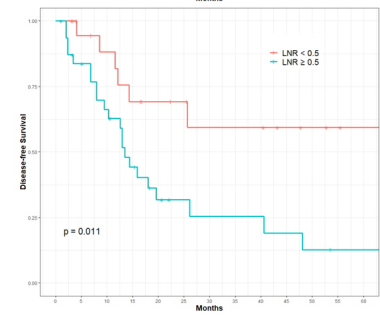
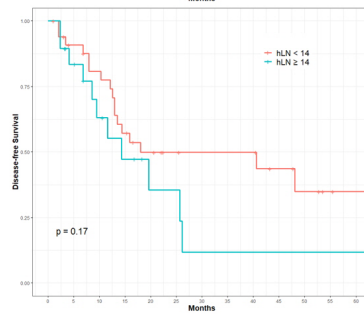
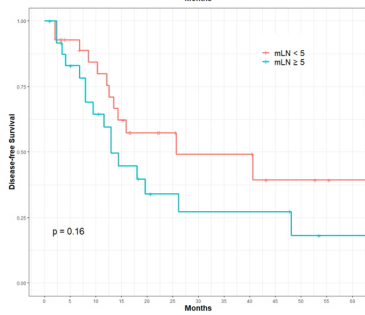
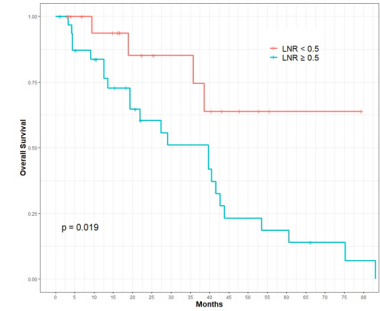
(A) mLN < 5 : number of metastatic lymph nodes < 5
mLN ≥ 5 : number of metastatic lymph nodes ≥ 5



(B) hLN < 14 : number of harvested lymph nodes < 14
hLN ≥ 14 : number of harvested lymph nodes ≥ 14



(C) LNR < 0.5 : number of mLN / number of hLN < 0.5
LNR ≥ 0.5 : number of mLN / number of hLN ≥ 0.5



Supplementary Fig. 1. Overall and disease-free survival of patients according to severity factors. mLN, number of metastatic paraaortic lymph nodes; hLN, number of harvested paraaortic lymph nodes; LNR, lymph node ratio (mLN/hLN).