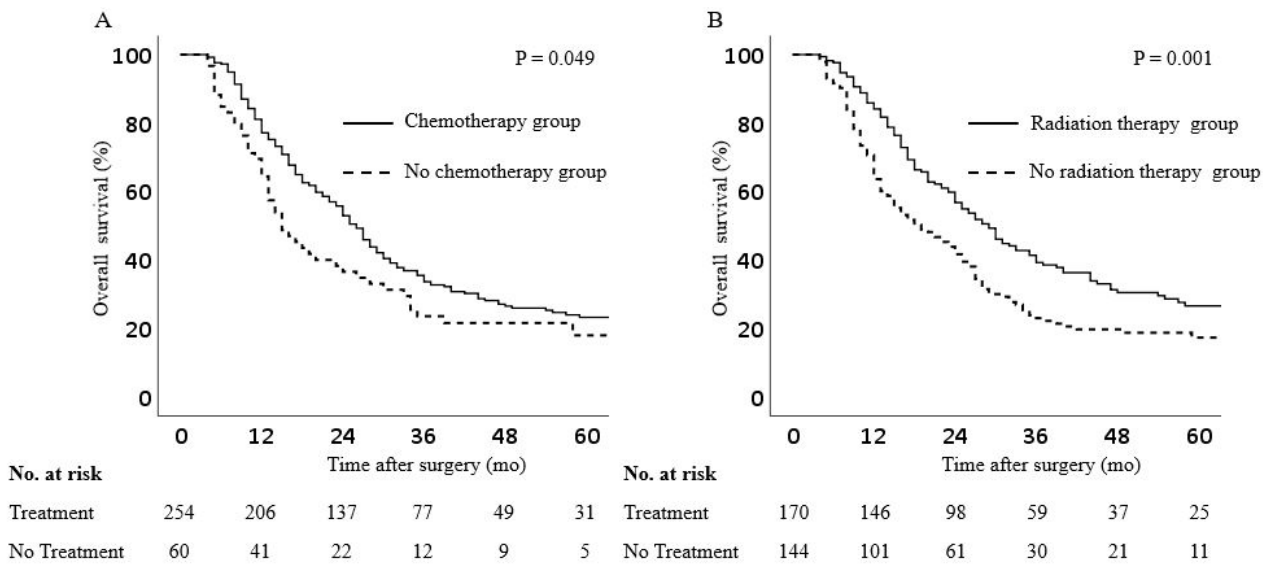


Supplementary Table 1. Overall survival of each margin according to R0/R1 status in 2 definitions (0 mm, 1 mm)

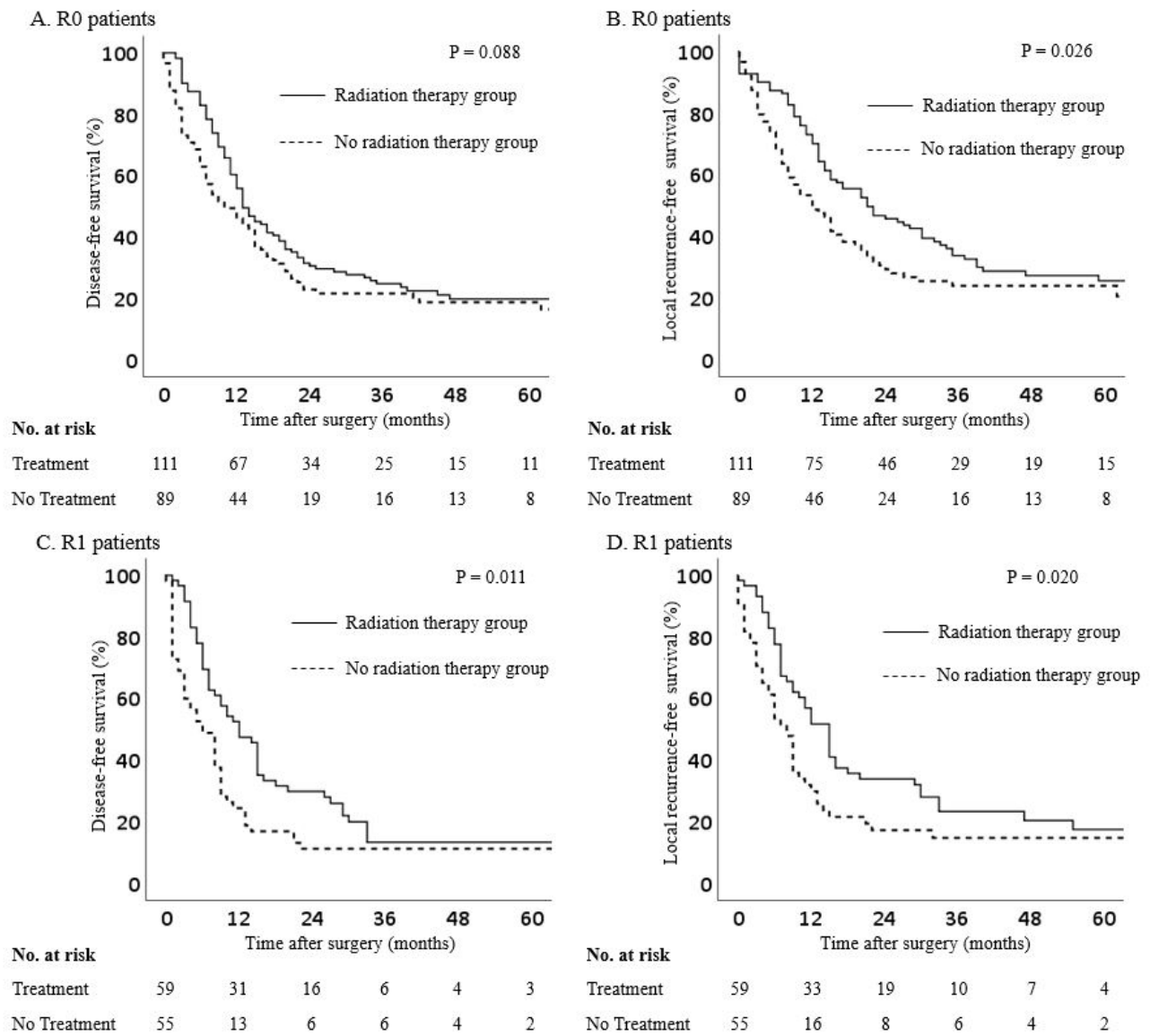
Each resection margin	0 mm definition			1 mm definition			
	No (%)	Median survival, months (95% CI)	P-value	No (%)	Median survival, months (95% CI)	P-value	
Overall	R0	265 (84.4)	26.0 (23.51–28.49)	0.052	200 (63.7)	27.0 (24.13–29.87)	0.016
	R1	49 (15.6)	16.0 (10.36–21.64)		114 (36.3)	18.0 (14.03–21.97)	
Pancreas transection	R0	304 (96.8)	25.0 (21.98–28.02)	0.374	302 (96.2)	25.0 (21.99–28.01)	0.708
	R1	10 (3.2)	17.0 (2.39–31.61)		12 (3.8)	23.0 (0.00–61.84)	
Anterior surface	R0	305 (97.1)	25.0 (22.08–27.93)	0.306	280 (89.8)	25.0 (21.85–28.16)	0.074
	R1	9 (2.9)	10.0 (7.08–12.92)		34 (10.8)	20.0 (11.43–28.57)	
Posterior surface	R0	306 (97.5)	25.0 (22.07–27.93)	0.002	289 (92.0)	25.0 (22.25–27.75)	0.003
	R1	8 (2.5)	13.0 (0.53–25.47)		25 (8.0)	17.0 (11.24–22.76)	
Vessel	R0	288 (91.7)	25.0 (22.06–27.94)	0.469	250 (79.6)	25.0 (22.21–27.79)	0.306
	R1	26 (8.3)	16.0 (6.01–25.99)		64 (20.4)	20.0 (14.21–25.79)	

Supplementary Table 2. Disease-free survival of each margin according to R0/R1 status in 2 definitions (0 mm, 1 mm)

Each resection margin		0 mm definition			1 mm definition		
		No (%)	Median survival, months (95% CI)	P-value	No (%)	Median survival, months (95% CI)	P-value
Overall	R0	265 (84.4)	12.0 (10.30–13.70)	0.045	200 (63.7)	13.0 (11.02–14.98)	0.009
	R1	49 (15.6)	6.0 (3.15–8.86)		114 (36.3)	8.0 (6.52–9.48)	
Pancreas transection	R0	304 (96.8)	12.0 (10.25–13.75)	0.015	302 (96.2)	11.0 (9.26–12.74)	0.623
	R1	10 (3.2)	4.0 (2.09–5.91)		12 (3.8)	5.0 (0.00–12.47)	
Anterior surface	R0	305 (97.1)	12.0 (10.21–13.79)	0.189	280 (89.8)	12.0 (10.08–13.92)	0.003
	R1	9 (2.9)	9.0 (6.23–11.77)		34 (10.8)	8.0 (5.72–10.28)	
Posterior surface	R0	306 (97.5)	12.0 (10.25–13.75)	0.010	289 (92.0)	12.0 (10.21–13.79)	<0.001
	R1	8 (2.5)	4.0 (1.23–6.77)		25 (8.0)	7.0 (4.55–9.45)	
Vessel	R0	288 (91.7)	12.0 (10.31–13.69)	0.914	250 (79.6)	12.0 (10.24–13.76)	0.679
	R1	26 (8.3)	7.0 (3.26–10.74)		64 (20.4)	9.0 (4.10–13.90)	



Supplementary Fig. 1. Impact of adjuvant chemotherapy (A) and adjuvant radiation therapy (B) in entire study population.



Supplementary Fig. 2. Disease-free survival and local recurrence-free survival of adjuvant radiation therapy status in 1-mm R0/R1 patients.