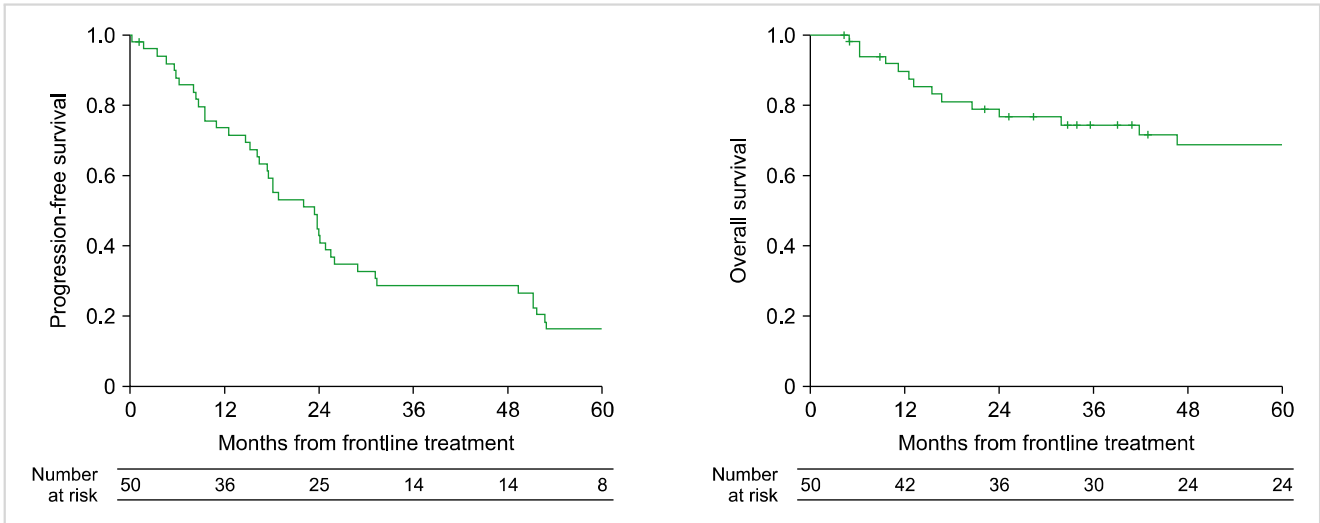


**Supplementary Table 1.** Primers used for pyrosequencing.

Mutation	Primer
<i>KRAS</i> G12V	F-ATAAGGCCTGCTGAAAATGACTG
	R-(biontin)-AGAATGGTCCTGCACCAGTAATA
	S-CTTGTGGTAGTTGGAGC
<i>KRAS</i> G13D	F-GGCCTGCTGAAAATGACTGA
	R-(biontin)-AGAATGGTCCTGCACCAGTAAT
	S-TGTGGTAGTTGGAGCTG
<i>NRAS</i> Q61R	F-TTTGTTGGACATACTGGATACAGC
	R-(biontin)-TTCCTAGTGTGGTAACCTCATT
	S-GGACATACTGGATACAGCT



**Supplementary Fig. 1.** Progression free survival after autologous stem cell transplantation in this study (N=50).

**Supplementary Table 2.** Clinical outcome after frontline treatment according to mutations.

	Number	PFS*	95% CI	P-value	OS*	95% CI	P-value
<b>RAS/RAF</b>							0.243
Yes	14 (28%)	18.2	7.5–29.0	0.015	NE	NE–NE	
No	36 (72%)	23.9	21.8–26.0		85.2	56.6–113.8	
<b>KRAS G12V</b>				<0.001			0.798
Yes	2 (4%)	0.4	0.4–NE		NE	NE–NE	
No	48 (96%)	23.7	16.5–26.9		105.7	63.7–NE	
<b>KRAS G13D</b>				0.771			0.17
Yes	2 (4%)	10	1.8–NE		4.6	4.6–NE	
No	48 (96%)	23.9	16.5–26		105.7	67.9–NE	
<b>NRAS Q61R</b>				0.603			0.907
Yes	4 (8%)	21.2	6–NE		NE	13.2–NE	
No	46 (92%)	23.5	16.5–25.6		105.7	63.7–NE	
<b>BRAF V600E</b>				0.04			0.273
Yes	7 (14%)	18.2	1.8–24.2		NE	4.6–NE	
No	43 (86%)	23.9	16.5–31.2		85.2	46.7–NE	

\*Median, months; PFS, progression free survival; OS, overall survival; CI, confidence interval; RAS/RAF, any of *KRAS*, *NRAS* and/or *BRAF* mutations; NE, not estimated.