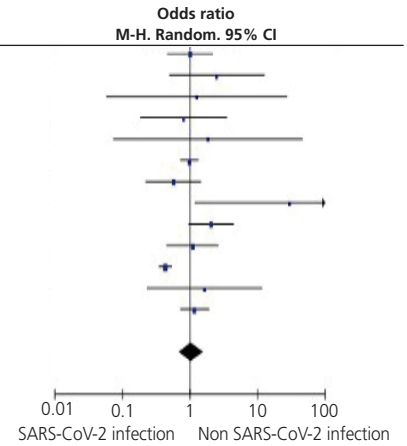


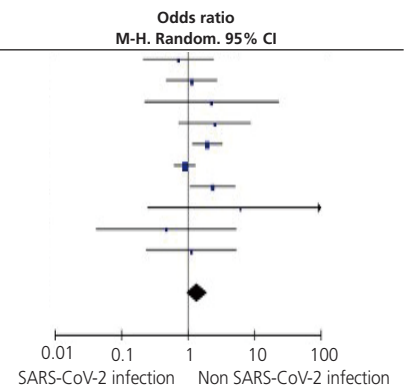
A. Total miscarriage

Study or subgroup	SARS-COV-2 infection		Non SARS-CoV-2 infection		Weight	Odds ratio	
	Events	Total	Events	Total		M-H, Random, 95% CI	Odds ratio
Adhikari, 2020	7	252	87	3,122	10.3%	1.00	[0.46, 2.18]
Cardona-Perez, 2021	3	70	3	170	4.8%	2.49	[0.49, 12.66]
Cosma, 2021	0	16	2	105	1.7%	1.25	[0.06, 27.31]
Crovetto, 2021	2	317	15	1,908	5.5%	0.80	[0.18, 3.52]
Erol, 2020	1	60	0	36	1.6%	1.84	[0.07, 46.38]
Fallach, 2022	81	2,753	83	2,753	14.4%	0.98	[0.71, 1.33]
Ferrugini, 2022	6	86	21	179	8.9%	0.56	[0.22, 1.45]
M'poca Charles, 2020	1	21	0	202	1.6%	29.63	[1.17, 751.15]
Martinez-Perez, 2020	11	246	17	763	10.4%	2.05	[0.95, 4.45]
Nayak, 2020	6	141	33	836	9.3%	1.08	[0.44, 2.63]
Regan, 2021	80	2,655	5,090	75,628	15.0%	0.43	[0.34, 0.54]
Seyed-Abdolvahab, 2021	3	14	2	14	3.6%	1.64	[0.23, 11.70]
Yang, 2020	28	65	4,321	11,013	12.9%	1.17	[0.72, 1.92]
Total (95% CI)		6,696		96,729	100.0%	1.04	[0.68, 1.60]
Total events	229		9,674				
Heterogeneity: Tau ² =0.31; Chi ² =45.89; df=12 (P<0.00001); I ² =74%							
Test for overall effect: Z=0.18 (P=0.86)							



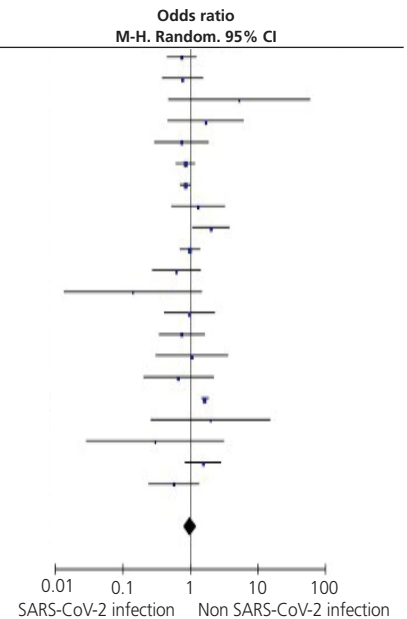
B. PPROM

Study or subgroup	SARS-COV-2 infection		Non SARS-CoV-2 infection		Weight	Odds ratio	
	Events	Total	Events	Total		M-H, Random, 95% CI	Odds ratio
Abedzadeh-Kalahroudi, 2021	4	57	9	94	6.9%	0.71	[0.21, 2.43]
Cardona-Perez, 2021	8	66	18	165	11.6%	1.13	[0.46, 2.73]
Cosma, 2021	1	16	3	105	2.2%	2.27	[0.22, 23.23]
Cruz-Lemini, 2021	5	174	5	430	6.7%	2.51	[0.72, 8.80]
Cruz-Meguizo, 2021	37	1,347	23	1,607	22.2%	1.95	[1.15, 3.29]
Getahun, 2022	29	2,203	487	32,920	29.3%	0.89	[0.61, 1.30]
Martinez-Perez, 2020	11	246	15	763	13.6%	2.33	[1.06, 5.15]
Masud, 2021	1	70	0	140	1.2%	6.06	[0.24, 150.80]
Saadia, 2021	1	48	2	46	2.0%	0.47	[0.04, 5.35]
Trahan, 2021	2	45	9	225	4.5%	1.12	[0.23, 5.35]
Total (95% CI)		4,272		36,495	100.0%	1.36	[0.96, 1.93]
Total events	99		571				
Heterogeneity: Tau ² =0.07; Chi ² =12.15; df=9 (P=0.21); I ² =26%							
Test for overall effect: Z=1.73 (P=0.08)							



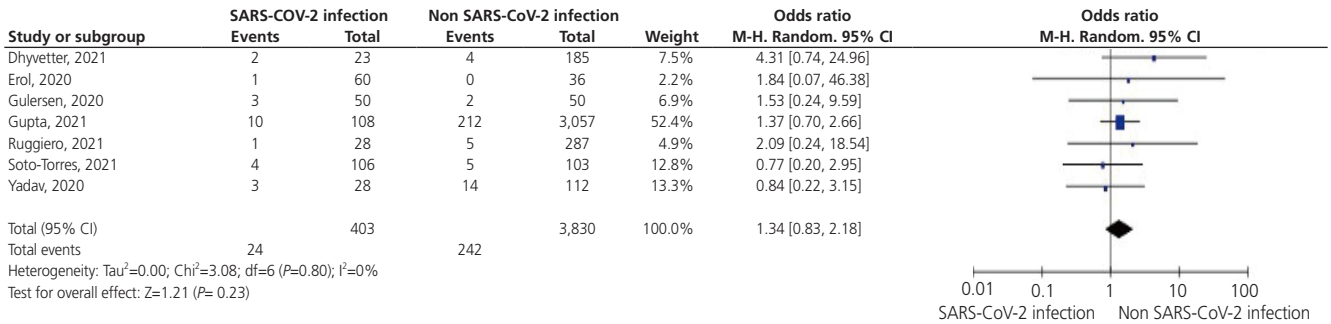
C. Postpartum hemorrhage

Study or subgroup	SARS-COV-2 infection		Non SARS-CoV-2 infection		Weight	Odds ratio	
	Events	Total	Events	Total		M-H, Random, 95% CI	Odds ratio
Adhikari, 2020	17	245	278	3,035	7.1%	0.74	[0.44, 1.23]
Ahlberg, 2020	10	155	50	604	5.4%	0.76	[0.38, 1.54]
Alipour, 2021	2	53	1	135	0.8%	5.25	[0.47, 59.22]
Cardona-Perez, 2021	4	69	6	169	2.5%	1.67	[0.46, 6.12]
Cruz-Lemini, 2021	6	174	20	430	4.0%	0.73	[0.29, 1.86]
Cruz-Meguizo, 2021	61	1,347	86	1,607	8.8%	0.84	[0.60, 1.17]
Getahun, 2022	131	2,203	2,312	32,920	10.1%	0.84	[0.70, 1.00]
Gupta, 2021	5	108	110	3,057	4.0%	1.30	[0.52, 3.26]
Haini, 2021	18	137	26	370	6.0%	2.00	[1.06, 3.78]
Katz, 2021	53	490	106	964	8.6%	0.98	[0.69, 1.39]
Laresgoiti-Servitje, 2021	7	298	31	828	4.5%	0.62	[0.27, 1.42]
Liu, 2020	1	32	3	16	0.9%	0.14	[0.01, 1.47]
Liu, 2021	7	56	36	279	4.3%	0.96	[0.41, 2.29]
Martinez-Perez, 2020	8	246	33	763	4.8%	0.74	[0.34, 1.63]
Nayak, 2020	3	141	17	836	2.6%	1.05	[0.30, 3.62]
Prabhu, 2020	3	70	38	605	2.8%	0.67	[0.20, 2.22]
Regan, 2021	252	2,655	4,551	75,628	10.4%	1.64	[1.43, 1.87]
Saviron-Comudella, 2021	1	22	27	1,146	1.2%	1.97	[0.26, 15.21]
Seyed-Abdolvahab, 2021	1	20	3	20	0.9%	0.30	[0.03, 3.15]
Steffen, 2021	14	61	153	939	6.1%	1.53	[0.82, 2.85]
Wang, 2020	6	53	140	760	4.3%	0.57	[0.24, 1.35]
Total (95% CI)		8,635		125,111	100.0%	0.98	[0.78, 1.24]
Total events	610		8,027				
Heterogeneity: Tau ² =0.13; Chi ² =65.96; df=20 (P<0.00001); I ² =70%							
Test for overall effect: Z=0.17 (P=0.87)							

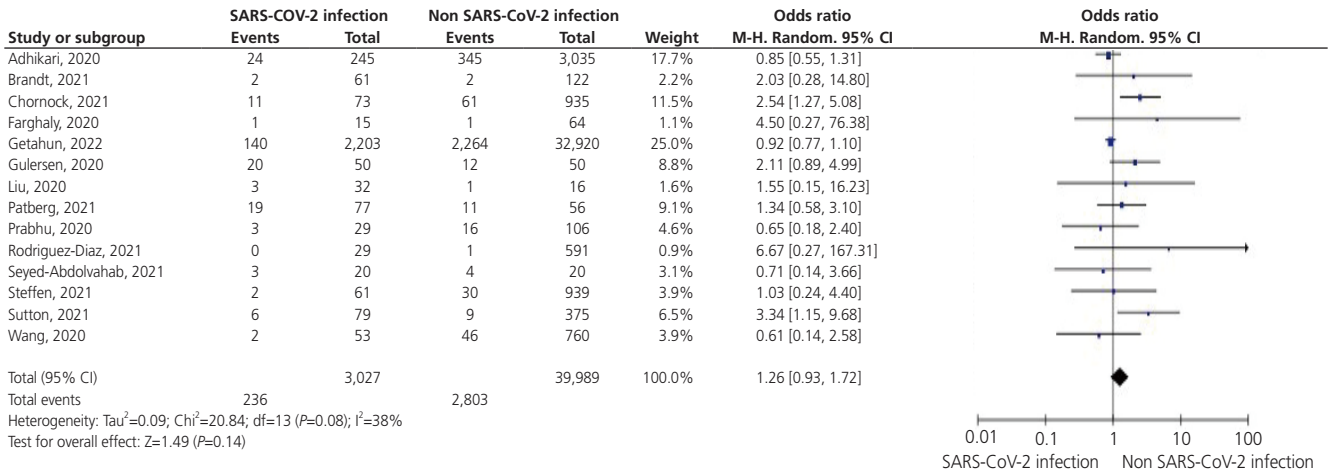


Supplementary Fig. 2. Forest plots of the summary crude odds ratio and 95% confidence intervals for the association between coronavirus disease 2019 and total miscarriage (A), PPROM (B), postpartum hemorrhage (C), cholestasis (D), and chorioamnionitis (E). SARS-CoV-2, severe acute respiratory syndrome coronavirus-2; CI, confidence interval; PPROM, preterm premature rupture of membranes.

D. Cholestasis



E. Chorioamnionitis



Supplementary Fig. 2. Forest plots of the summary crude odds ratio and 95% confidence intervals for the association between coronavirus disease 2019 and total miscarriage (A), PPRM (B), postpartum hemorrhage (C), cholestasis (D), and chorioamnionitis (E). SARS-CoV-2, severe acute respiratory syndrome coronavirus-2; CI, confidence interval; PPRM, preterm premature rupture of membranes. (Continued)