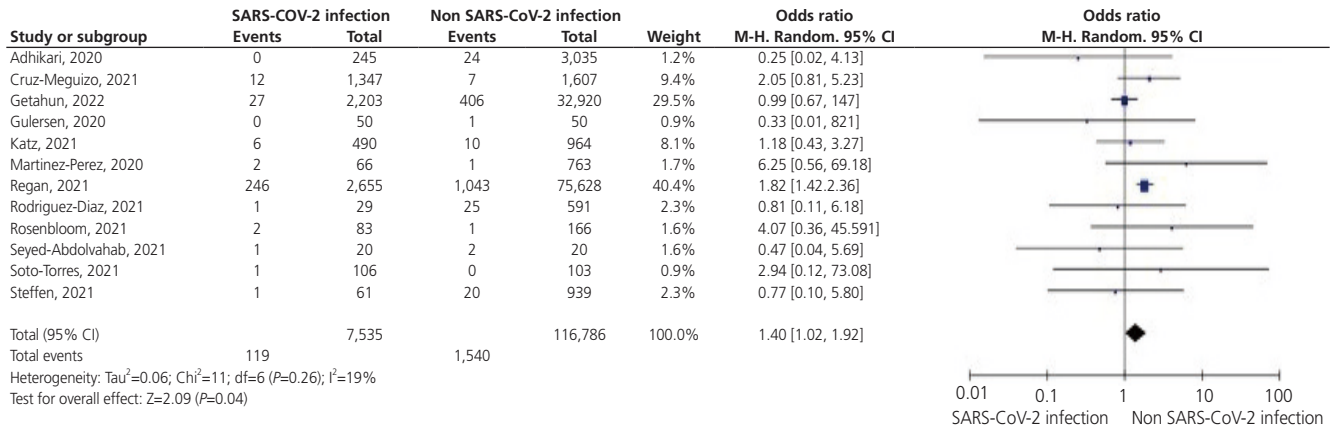
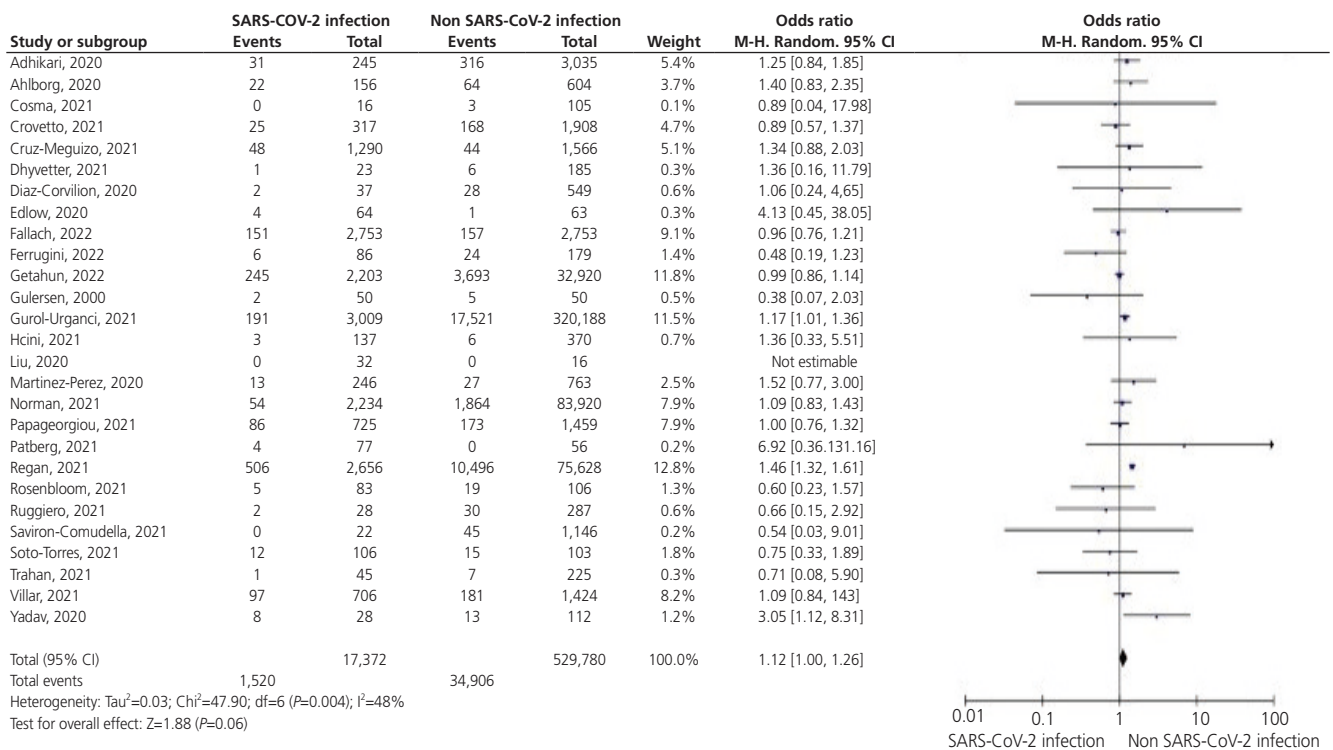


A. Placental abruption

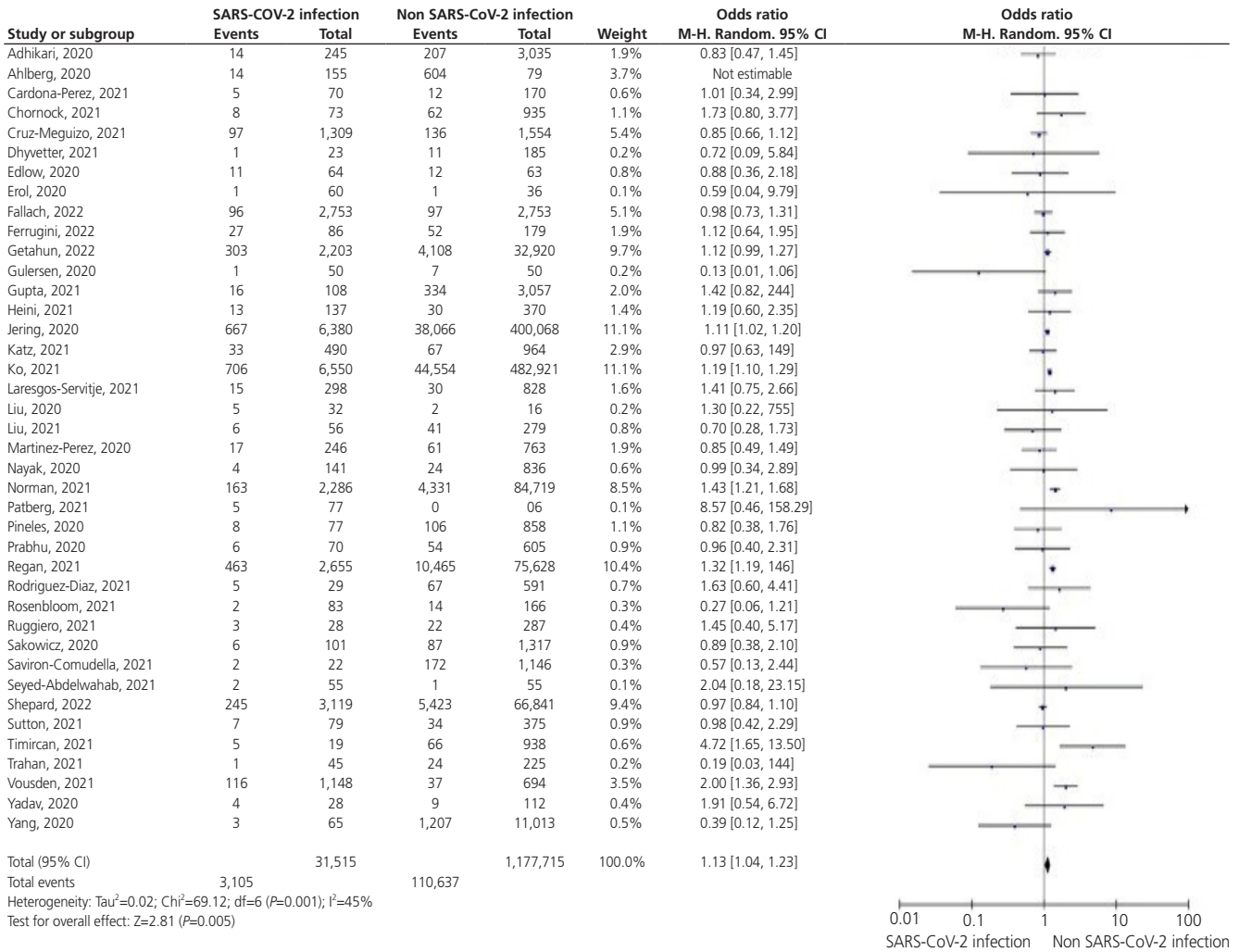


B. IUGR or SGA

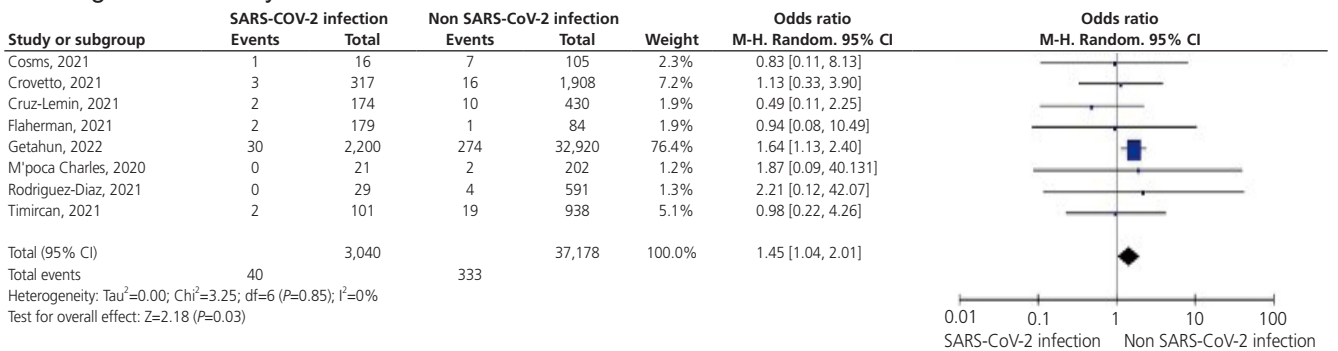


Supplementary Fig. 1. Forest plots of the summary crude odds ratios and 95% confidence intervals for the association between coronavirus disease 2019 and placental abruption (A), IUGR or SGA (B), GDM (C), and congenital anomaly (D). SARS-CoV-2, severe acute respiratory syndrome coronavirus-2; CI, confidence interval; IUGR, intrauterine growth retardation; SGA, small for gestational age; GDM, gestational diabetes mellitus.

C. GDM



D. Congenital anomaly



Supplementary Fig. 1. Forest plots of the summary crude odds ratios and 95% confidence intervals for the association between coronavirus disease 2019 and placental abruption (A), IUGR or SGA (B), GDM (C), and congenital anomaly (D). SARS-CoV-2, severe acute respiratory syndrome coronavirus-2; CI, confidence interval; IUGR, intrauterine growth retardation; SGA, small for gestational age; GDM, gestational diabetes mellitus. (Continued)