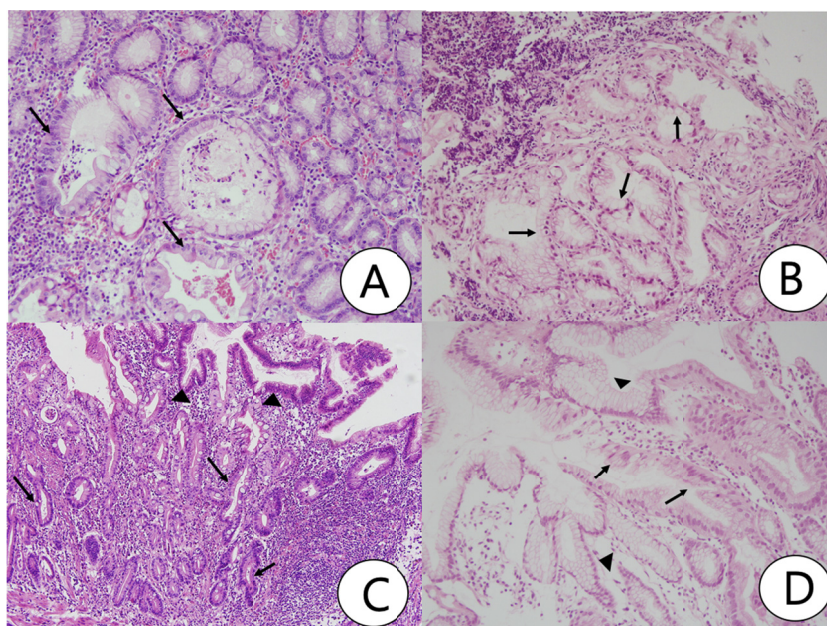


## EXTREMELY WELL DIFFERENTIATED CARCINOMA



**Supplementary Fig. S1.** (A) Inharmonious disproportionate glands (arrows) are shown among the background foveolar epithelium in case No. 19 (B) Distended mucin of gastric-type extremely well-differentiated adenocarcinoma (EWDA) glands (arrows) is noted in case No. 6. (C) Irregularly distorted glandular shape of the EWDA (arrows) is shown with normal foveolar epithelium (arrowheads) in case No. 18. (D) EWDA glands demonstrate a wobbly, undulating apical mucin border (arrows) adjacent to the normal foveolar glands (arrowheads) in case No. 8.