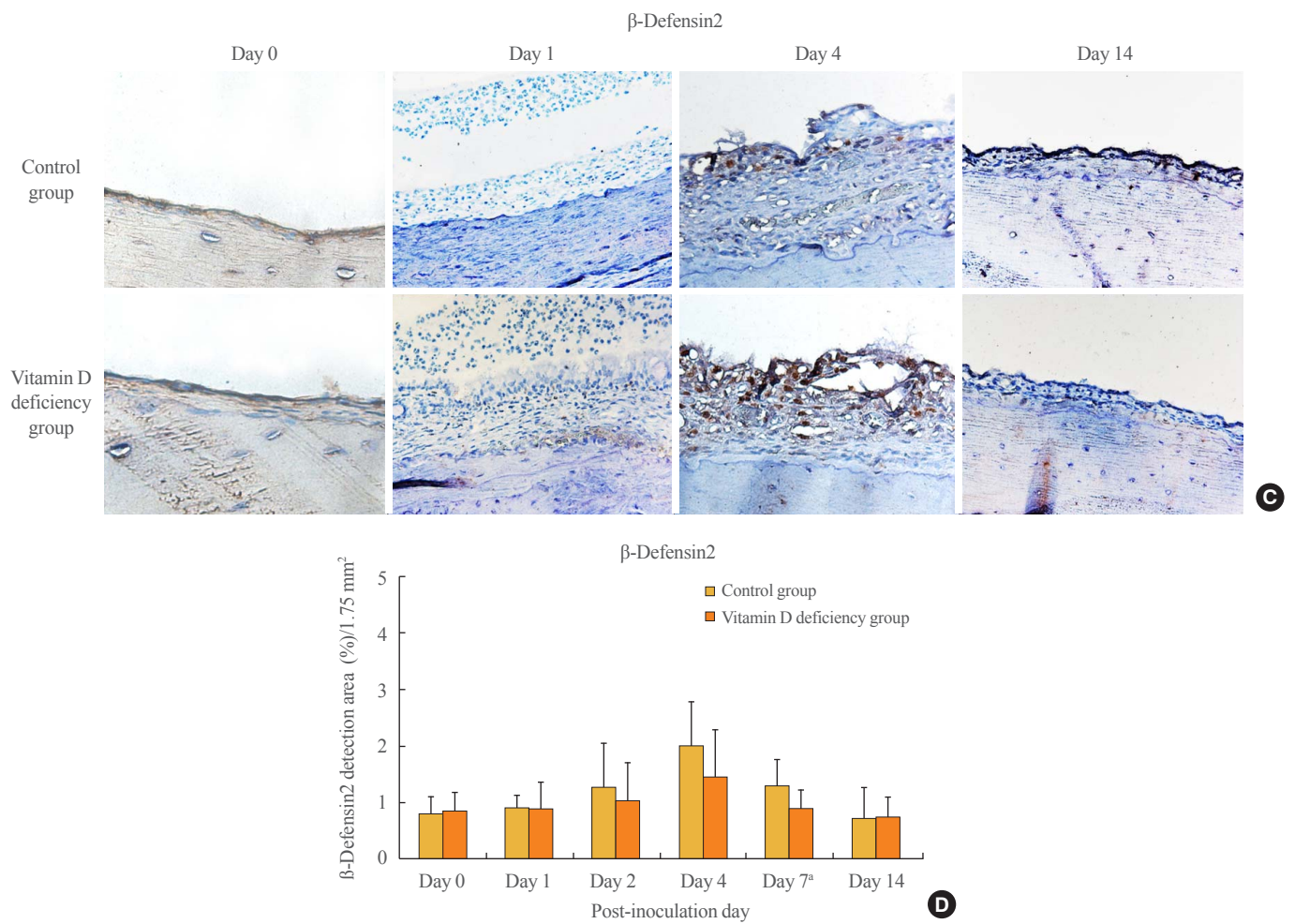


Supplemental Fig. S1. (Continued to the next page)



Supplemental Fig. S1. Immunohistochemical staining and the average detection area (%) of (A, B) cathelicidin-related antimicrobial peptide (CRAMP) and (C, D) β -defensin 2 for bacterially induced middle ear mucosa. ^a $P < 0.05$; ^b $P < 0.005$.