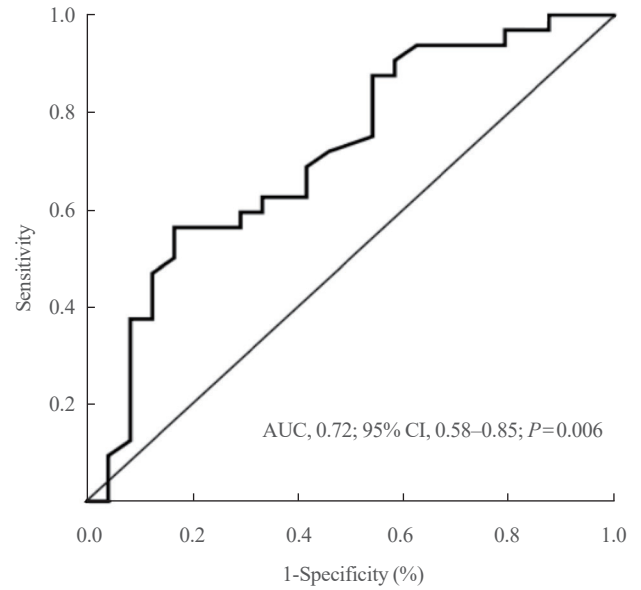


Supplemental Fig. S6. Receiver operating characteristic curve of the duration of diabetes in predicting the achievement of glycemic control. AUC, area under the receiver operating characteristic curve; CI, confidence interval.



Supplemental Fig. S7. Receiver operating characteristic curve of estimated glomerular filtration rate for predicting adequate weight loss. AUC, area under the receiver operating characteristic curve; CI, confidence interval.