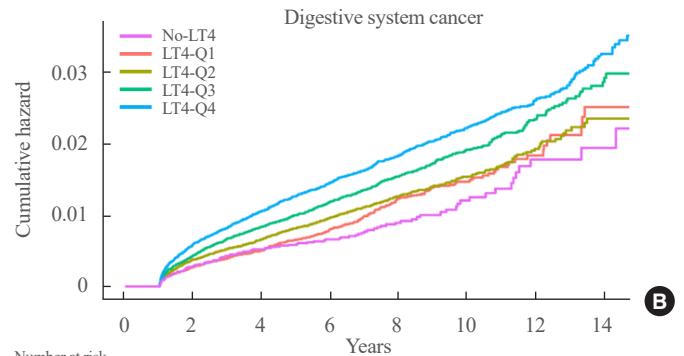
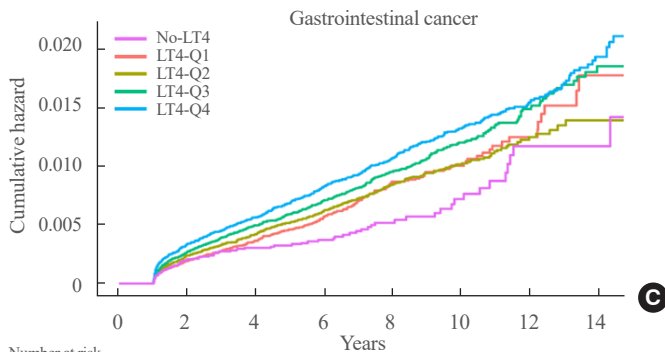


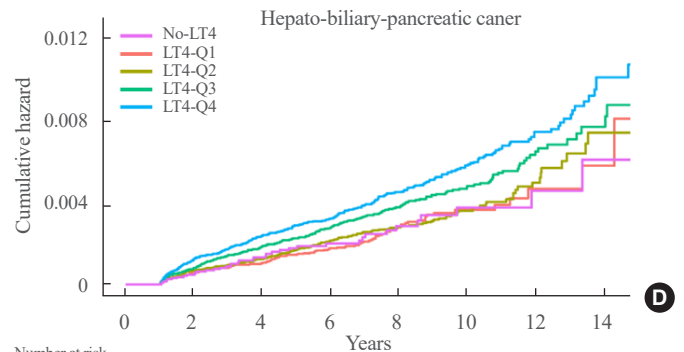
Number at risk								
	0	2	4	6	8	10	12	14
No-LT4	14,248	12,831	8,753	5,860	3,379	1,750	815	364
LT4-Q1	52,098	46,306	33,653	22,586	10,867	4,097	1,339	380
LT4-Q2	52,506	49,828	43,126	34,104	19,631	9,211	3,187	905
LT4-Q3	52,054	49,701	44,111	36,108	22,743	12,121	4,978	1,580
LT4-Q4	50,697	48,276	43,291	36,566	24,772	14,713	7,335	2,639



Number at risk								
	0	2	4	6	8	10	12	14
No-LT4	14,248	12,971	8,923	6,010	3,495	1,838	864	388
LT4-Q1	52,098	46,807	34,290	23,152	11,213	4,270	1,411	406
LT4-Q2	52,506	50,400	43,959	35,025	20,326	9,591	3,342	962
LT4-Q3	52,054	50,272	44,983	37,084	23,538	12,670	5,256	1,692
LT4-Q4	50,697	48,859	44,146	37,572	25,667	15,380	7,718	2,798



Number at risk								
	0	2	4	6	8	10	12	14
No-LT4	14,248	12,984	8,947	6,036	3,518	1,855	879	396
LT4-Q1	52,098	46,848	34,342	23,210	11,256	4,300	1,430	411
LT4-Q2	52,506	50,485	44,088	35,168	20,452	9,693	3,413	983
LT4-Q3	52,054	50,367	45,151	37,277	23,707	12,816	5,381	1,740
LT4-Q4	50,697	48,988	44,359	37,797	25,890	15,592	7,890	2,880



Number at risk								
	0	2	4	6	8	10	12	14
No-LT4	14,248	13,009	8,963	6,050	3,526	1,861	886	399
LT4-Q1	52,098	46,929	34,469	23,330	11,345	4,339	1,449	421
LT4-Q2	52,506	50,598	44,256	35,373	20,614	9,779	3,453	994
LT4-Q3	52,054	50,488	45,338	37,494	23,900	12,942	5,440	1,761
LT4-Q4	50,697	49,111	44,527	38,024	26,073	15,722	7,967	2,920

Supplemental Fig. S1. Cumulative hazard of subsequent primary cancers (SPCs) during the follow-up period according to levothyroxine dosage per body weight in the subgroup analysis ($n=260,567$). The Cox proportional hazard model adjusted for age, sex, cumulative doses of radioactive iodine therapy, Charlson comorbidity index, obesity, smoking, and alcohol consumption was used to estimate the risks of all SPCs (A), head and neck (B), gastrointestinal (C), and hepato-biliary-pancreatic cancers (D). LT4, levothyroxine.