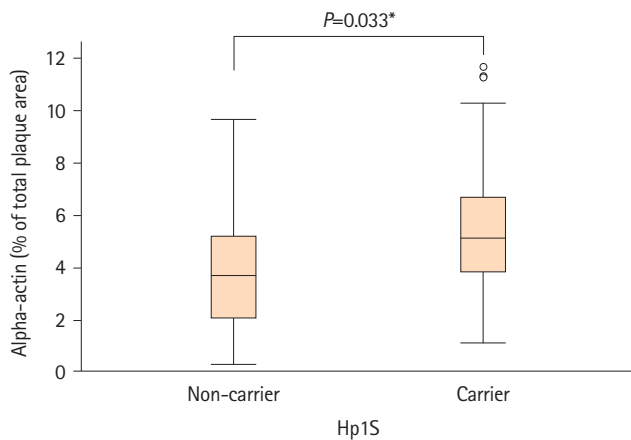
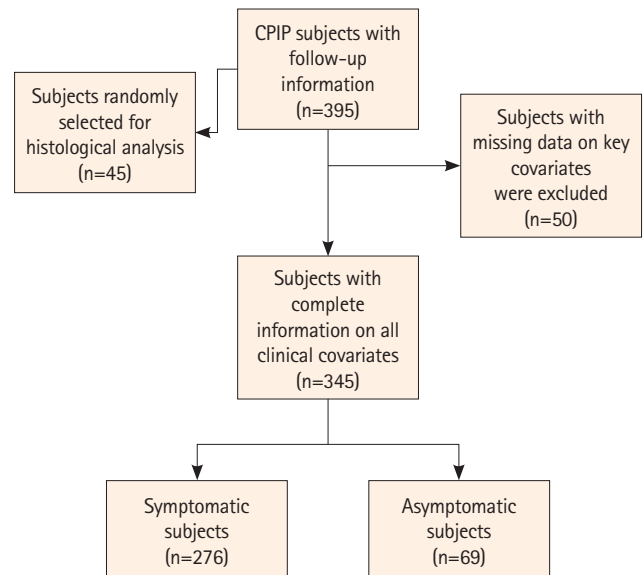


Supplementary Figure 1. Kaplan-Meier curves depicting the time to cardiovascular events (CVE) in the entire cohort. (A) Hp1F carriers vs. non-carriers. (B) Hp2SS carriers vs. non-carriers. (C) Hp2FS carriers vs. non-carriers. (D) Hp2 carriers vs. non-carriers. The *P*-value from the log-rank test is reported.



Supplementary Figure 2. The plaque area stained positive for the smooth muscle cell marker, alpha-actin, was significantly greater in plaques from Hp1S carriers compared to plaques from non-carriers. Mann-Whitney U test was used. **P*<0.05, statistically significant.



Supplementary Figure 3. Flow chart showing the number of patients included in the study and the statistical analysis. CPIP, Carotid Plaque Imaging Project cohort.