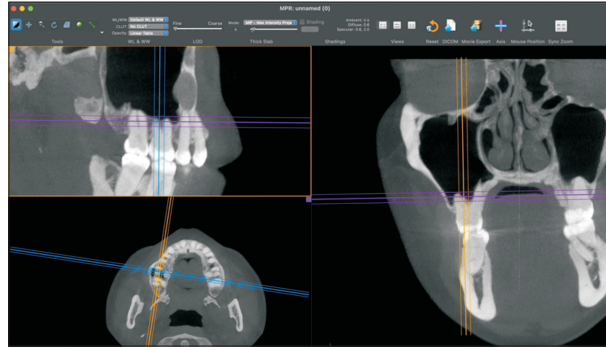


Supplementary Table 1. Intraobserver agreement for each tuberosity measurement

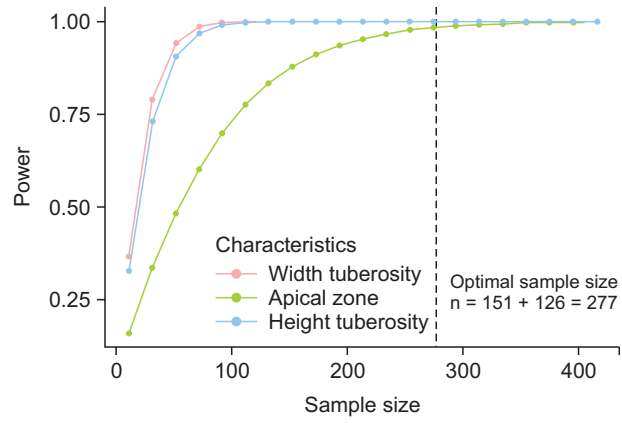
Variable	Measure 1 (n = 40)*	Measure 2 (n = 40)*	CCC
Coronal zone	9.37 (8.29:10.30)	9.44 (8.04:10.53)	0.989
Width of tuberosity	10.64 (8.85:12)	10.26 (8.99:10.42)	0.994
Height of tuberosity	2.24 (1.48:3.55)	2.21 (1.41:3.51)	0.994
Apical zone	1.27 (0:2.92)	1.30 (0:2.94)	0.985

CCC, concordance correlation coefficient.

*Median (P25:P75).



Supplementary Figure 1. Sagittal, trans-axial, and coronal orientation of tomographic slices.



Supplementary Figure 2. Estimation of the statistical power of the sample for each tuberosity measurement.