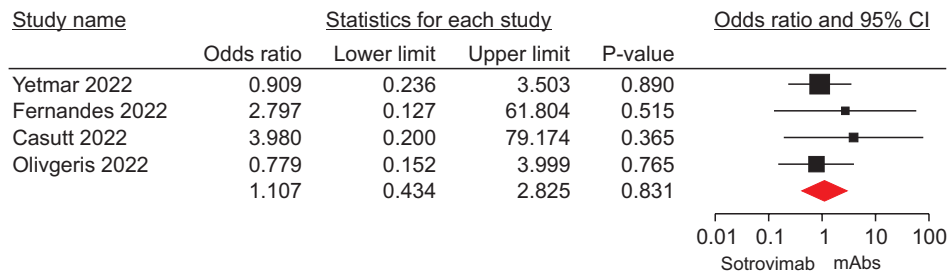


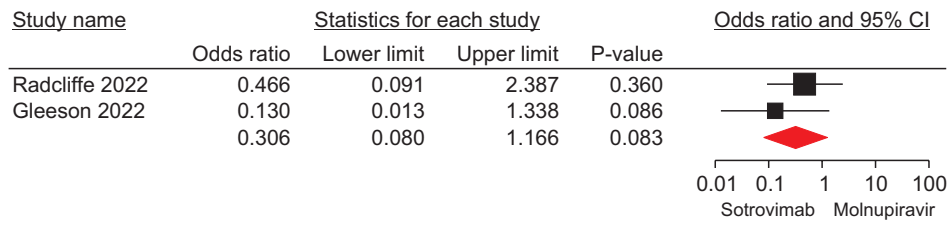
**Supplementary Table 1.** Risk of bias assessment using the Risk of Bias in Non-randomized Studies of Interventions (ROBINS-I) instrument

Study	Confounding	Selection bias	Classification of interventions	Deviation from intended interventions	Missing data	Measurement of outcomes	Reported result	Overall
Radcliffe et al. (2022) [10]	Moderate	Low	Low	Low	Low	Low	Low	Moderate
Solera et al. (2022) [11]	Moderate	Low	Low	Low	Low	Low	Low	Moderate
Hedvat et al. (2022) [4]	Moderate	Low	Low	Moderate	Low	Low	Low	Moderate
Chavarot et al. (2022) [8]	Moderate	Low	Low	Moderate	Low	Moderate	Low	Serious
Gleeson et al. (2022) [17]	Moderate	Low	Low	Low	Low	Low	Low	Moderate
Casutt et al. (2022) [15]	Moderate	Low	Low	Moderate	Low	Low	Low	Moderate
Yetmar et al. (2022) [9]	Moderate	Low	Low	Low	Low	Low	Low	Moderate
Papadimitriou-Olivgeris et al. (2022) [9]	Moderate	Low	Low	Low	Low	Low	Low	Moderate
Fernandes et al. (2022) [16]	Moderate	Low	Low	Low	Low	Low	Low	Moderate
Wong et al. (2022) [19]	Moderate	Low	Low	Low	Low	Low	Low	Moderate

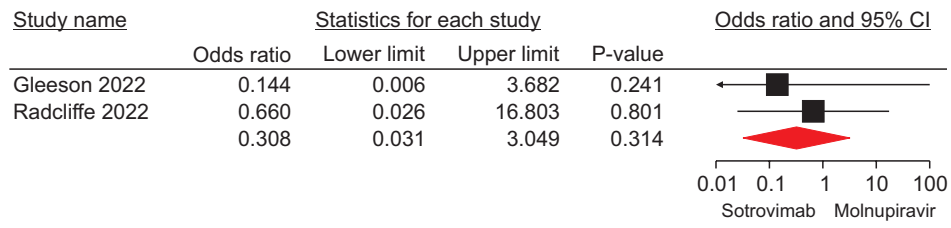
Moderate, the study is sound for a non-randomized study with regard to this domain but cannot be considered comparable to a well-performed randomized trial; Low, the study is comparable to a well-performed randomized trial with regard to this domain; Serious, the study has some important problems in this domain.



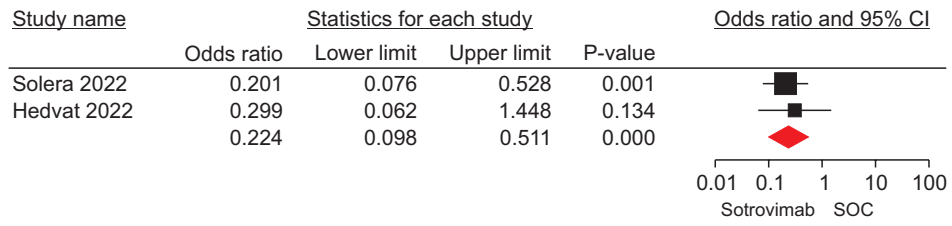
**Supplementary Fig. 1.** Forest plot of sotrovimab versus monoclonal antibodies (mAbs) for hospitalization rate. CI, confidence interval; mAbs, monoclonal antibodies.



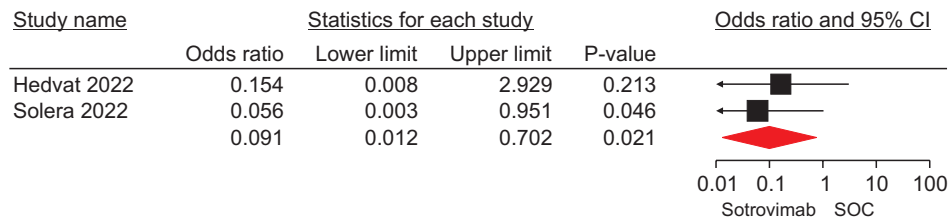
**Supplementary Fig. 2.** Forest plot of sotrovimab versus molnupiravir for hospitalization rate. CI, confidence interval.



**Supplementary Fig. 3.** Forest plot of sotrovimab versus molnupiravir for intensive care unit admission. CI, confidence interval.



**Supplementary Fig. 4.** Forest plot of sotrovimab versus molnupiravir for the need for supplemental oxygen therapy. CI, confidence interval; SOC, standard of care.



**Supplementary Fig. 5.** Forest plot of sotrovimab versus molnupiravir for the need for mechanical ventilation. CI, confidence interval; SOC, standard of care.