

Supplementary Table 1. Multivariable analysis of graft-versus-host disease incidence

Variable	HR	95% CI	P-value
Age	1.010	0.974–1.046	0.599
Sex	0.559	0.157–1.982	0.367
Pretransplant MELD score	0.985	0.931–1.041	0.582
HLA-OWMM	9.927	2.240–43.995	0.003
LDLT	0.486	0.174–1.357	0.168

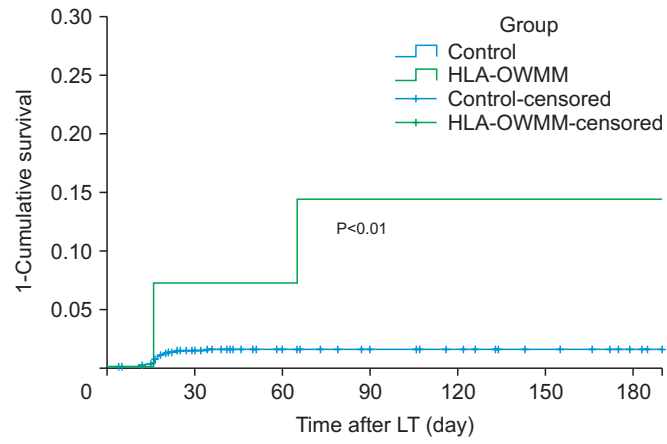
HR, hazard ratio; CI, confidence interval; MELD, Model for End-Stage Liver Disease; HLA, human leukocyte antigen; OWMM, one-way mismatch; LDLT, living donor liver transplantation.

Supplementary Table 2. Comparison of baseline characteristics among propensity score matched population

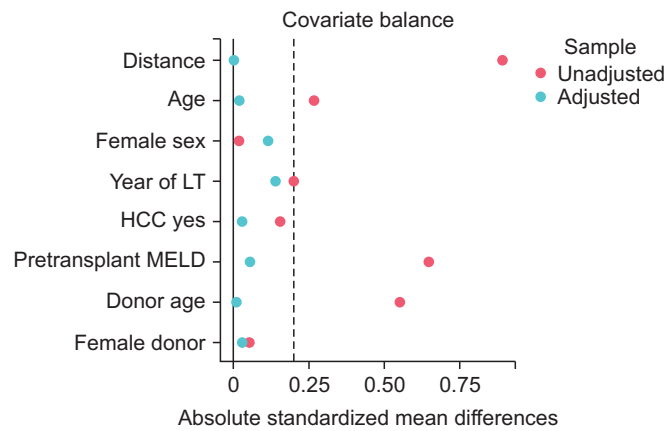
Variable	HLA-OWMM (n=14)	Control (n=70)	P-value
Recipient age (yr)	52 (40–61)	52 (44–55)	0.727
Female recipient	4 (28.6)	12 (17.1)	0.534
Body mass index (kg/m ²)	22.9±3.1	23.1±3.9	0.849
Diabetes mellitus	3 (21.4)	15 (21.4)	>0.999
Underlying liver disease			0.860
Hepatitis B	6 (42.9)	43 (61.4)	
Hepatitis C	2 (14.3)	5 (7.1)	
Alcoholic liver disease	2 (14.3)	5 (7.1)	
Autoimmune liver disease	0	1 (1.4)	
Acute liver failure	1 (7.1)	3 (4.3)	
Biliary atresia	2 (14.3)	9 (12.9)	
Others	1 (7.1)	4 (5.7)	
Hepatocellular carcinoma	9 (64.3)	47 (67.1)	>0.999
Pretransplant MELD score	10 (7–14)	9 (7–14)	0.909
Donor relation			0.214
Living-related donor	12 (85.7)	44 (62.9)	
Living-unrelated donor	0	7 (10.0)	
Deceased donor	2 (14.3)	19 (27.1)	
Donor age (yr)	28 (25–34)	28 (22–34)	0.782
Female donor	5 (35.7)	23 (32.9)	>0.999

Values are presented as median (interquartile range), number (%), or mean±standard deviation.

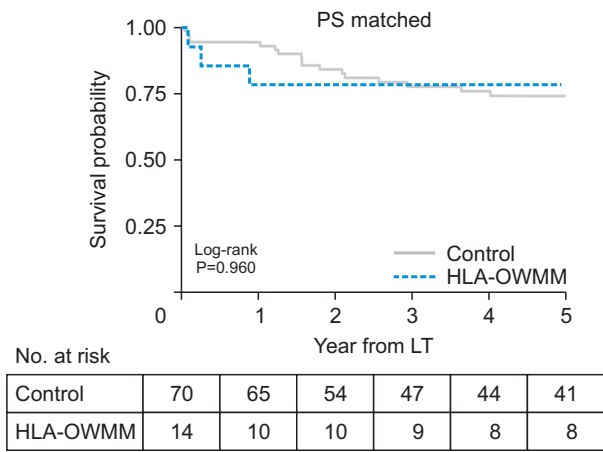
HLA, human leukocyte antigen; OWMM, one-way mismatch; MELD, Model for End-Stage Liver Disease.



Supplementary Fig. 1. Kaplan-Meier curves for graft-versus-host disease incidence according to HLA-OWMM. HLA, human leukocyte antigen; OWMM, one-way mismatch; LT, liver transplantation.



Supplementary Fig. 2. Comparing the absolute standardized differences in baseline characteristics before and after matching with propensity scores. LT, liver transplantation; HCC, hepatocellular carcinoma; MELD, Model for End-Stage Liver Disease.



Supplementary Fig. 3. Comparison of patient survival after LT among PS matched population. PS, propensity score; HLA, human leukocyte antigen; OWMM, one-way mismatch; LT, liver transplantation.