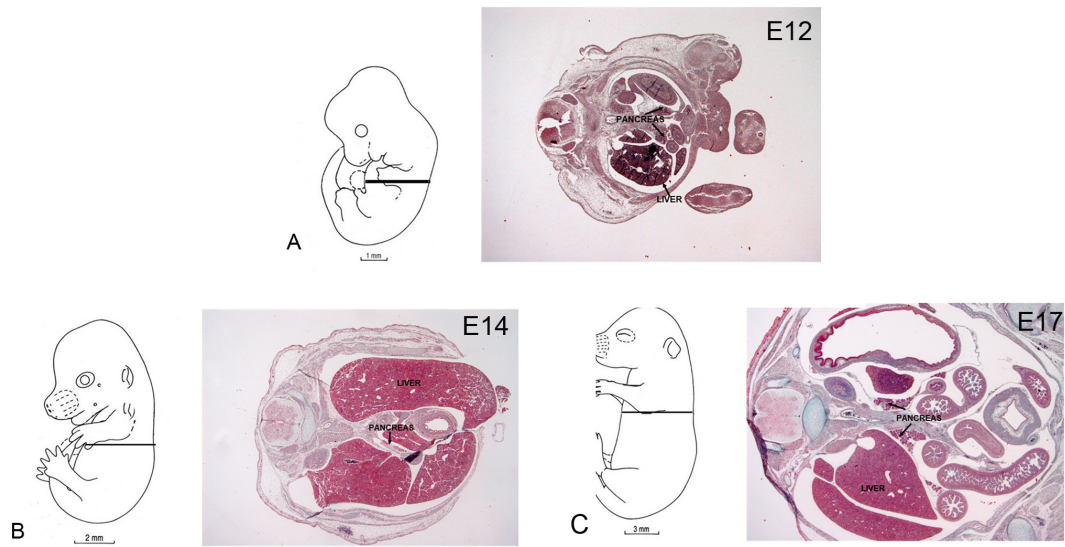


Supplementary Fig. 1. Morphological analysis of mouse conceptuses at different developmental stages in the respiratory apparatus. Graphic representation (A, B) and hematoxylin-eosin staining (a¹, b¹, a², and b²) of mouse conceptuses. (A) Developmental stage E14, (B) developmental stage E17. The black transverse lines in (A, B) indicate the approximate level at which the sections showed in a1, b1, a2, and b2 were taken. (A, B) Scale bars=300 μ m.



Supplementary Fig. 2. Morphological analysis of mouse conceptuses at different developmental stages in liver and pancreas. Graphic representation (A–C) and Masson’s trichrome staining of mouse conceptuses. (A) developmental stage E12; (B) developmental stage E14, (C) developmental stage E17. The black transverse lines in (A–C) indicate the approximate level at which the sections showed in a, b, and c were taken. (A–C) Scale bars=300 μ m.