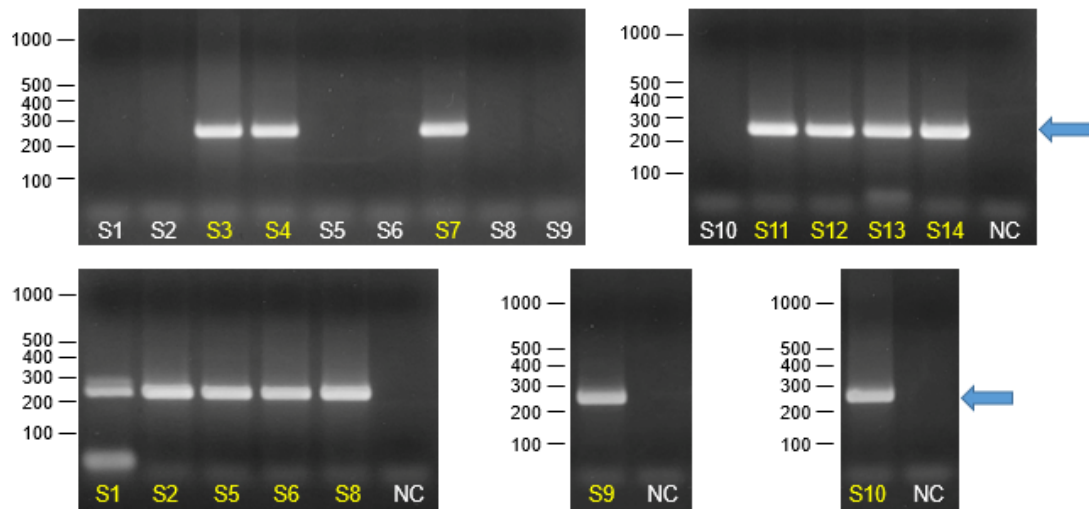
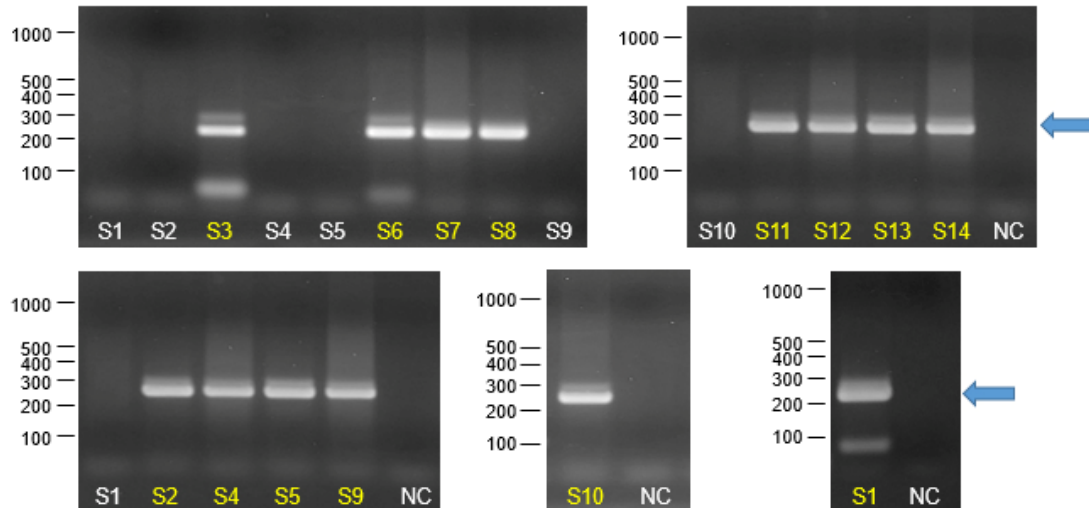


### 1<sup>st</sup> Extracts

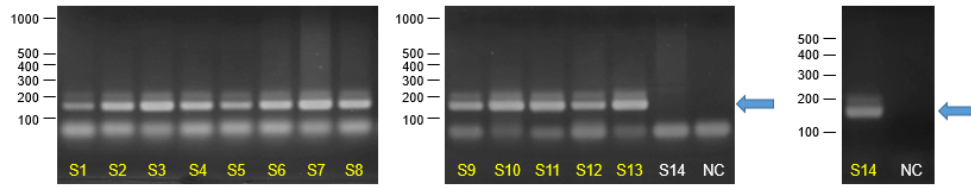


### 2<sup>nd</sup> Extracts

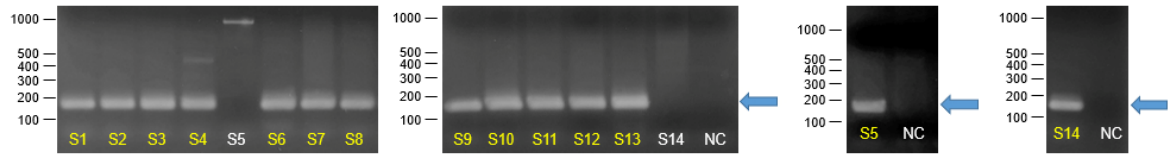


**Supplementary Fig. 1.** PCR results by Lac-1 primer set. Arrows indicate PCR products amplified by primer set. S1 to S14, Sample ID described in Table 1. PCR, polymerase chain reaction; NC, extraction negative control. Yellow colored sample ID were used with direct sequencing analysis.

### 1<sup>st</sup> Extracts

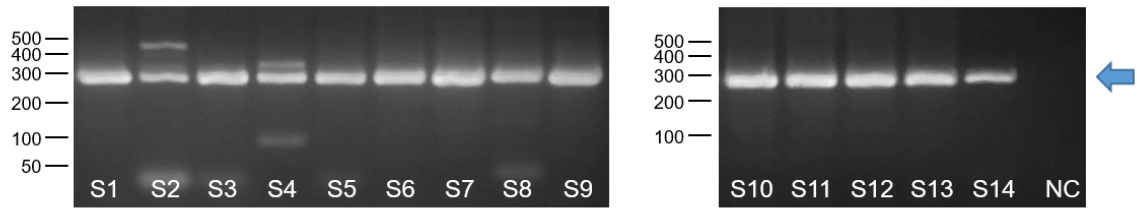


### 2<sup>nd</sup> Extracts

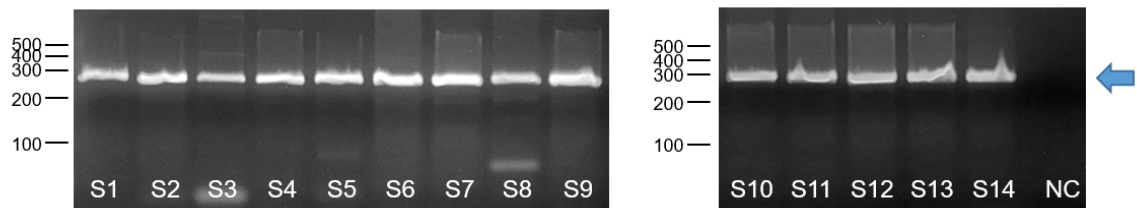


**Supplementary Data 2.** PCR results by Lac-2 primer set. Arrows indicate PCR products amplified by primer set. S1 to S14, Sample ID described in Table 1. NC, extraction negative control. Yellow colored sample ID were used with direct sequencing analysis.

### 1<sup>st</sup> Extracts



### 2<sup>nd</sup> Extracts



**Supplementary Data 3.** PCR results of hypervariable region on mitochondrial DNA gene. Arrows indicate PCR products amplified by primer set. S1 to S14, Sample ID described in Table 1. NC, extraction negative control.