

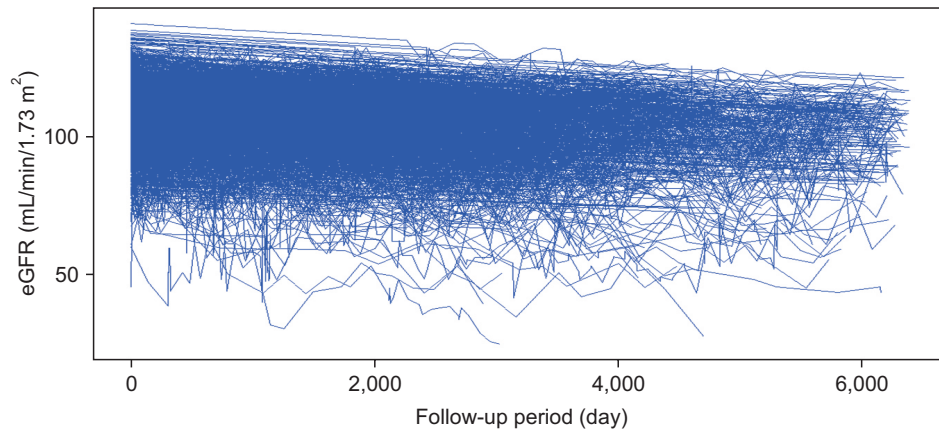
**Supplementary Table 1.** NSAID Intake Score and eGFR at each interval with age groups

Age group (yr)	Interval	6 months interval	1 years interval	2 years interval	3 years interval	5 years interval	10 years interval
18~40	Number of intervals	20,863	10,187	4,829	3,031	1,637	501
	NSAIDs Intake Score	54.39±39.92	47.84±41.30	43.71±40.53	43.08±40.10	43.76±38.04	39.14±39.79
	Creatinine*, mg/dL	0.90±0.32	0.90±0.29	0.90±0.17	0.89±0.20	0.88±0.26	0.88±0.35
	eGFR*, mL/min/1.73 m <sup>2</sup>	112.04±12.11	111.44±11.94	110.79±12.27	110.37±11.38	109.76±11.58	107.26±12.64
40~60	Number of intervals	3,810	1,860	884	551	291	85
	NSAIDs Intake Score	58.34±38.76	55.47±40.36	49.80±40.59	49.24±40.32	48.29±40.83	51.44±39.63
	Creatinine*, mg/dL	0.90±0.15	0.90±0.15	0.91±0.16	0.91±0.18	0.91±0.18	0.93±0.19
	eGFR*, mL/min/1.73 m <sup>2</sup>	97.65±10.93	97.21±11.50	95.71±11.65	95.12±12.44	93.21±12.99	88.71±14.01
60~80	Number of intervals	229	110	52	31	18	6
	NSAIDs Intake Score	82.12±24.64	69.74±36.49	59.32±35.70	51.09±34.78	55.25±35.16	65.51±42.62
	Creatinine*, mg/dL	0.90±0.13	0.93±0.14	0.97±0.17	0.95±0.22	0.88±0.17	0.95±0.29
	eGFR*, mL/min/1.73 m <sup>2</sup>	84.90±8.66	82.08±8.27	77.71±10.86	80.43±13.52	84.12±9.97	76.10±15.12

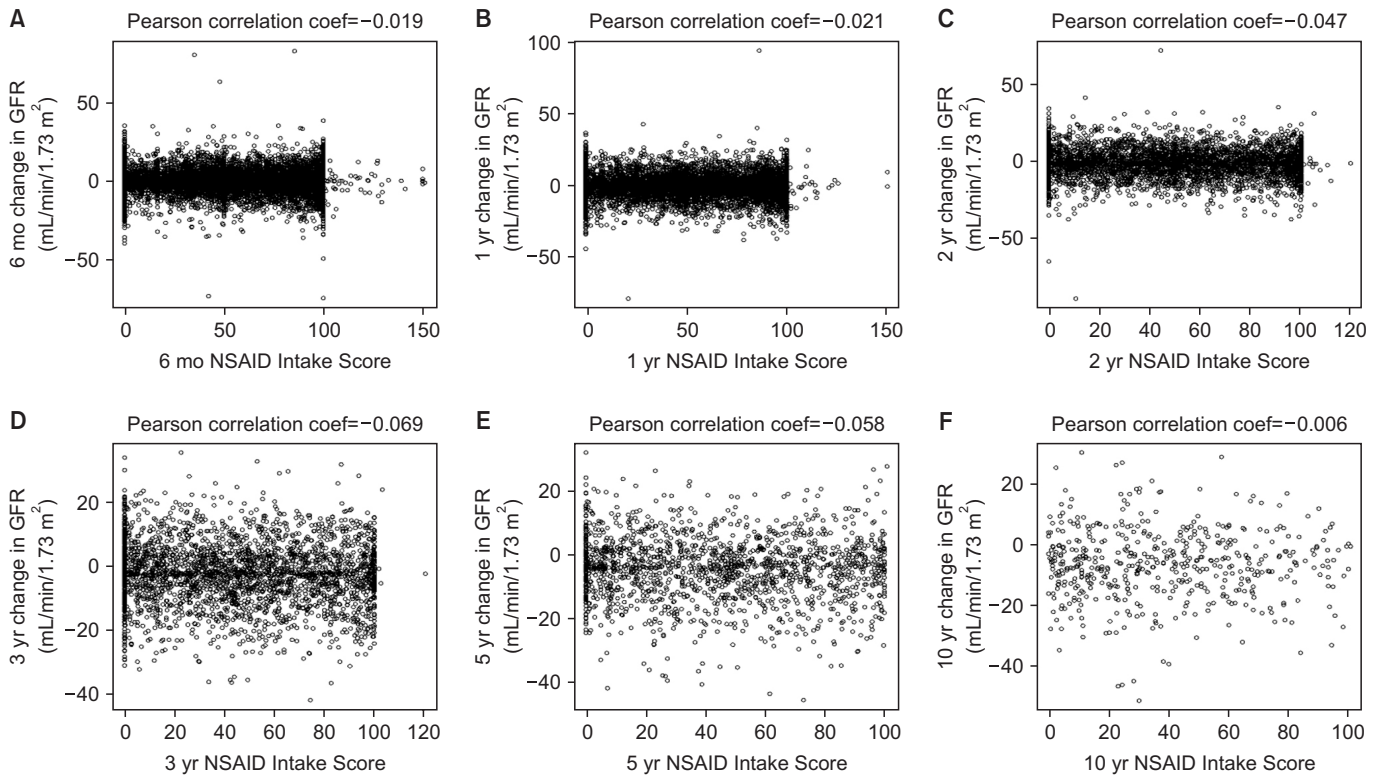
eGFR: estimated glomerular filtration rate, NSAIDs: nonsteroidal anti-inflammatory drugs. \*Values at the end of interval.

**Supplementary Table 2.** Pearson correlation between NSAIDs Intake Score and eGFR at each interval with age groups

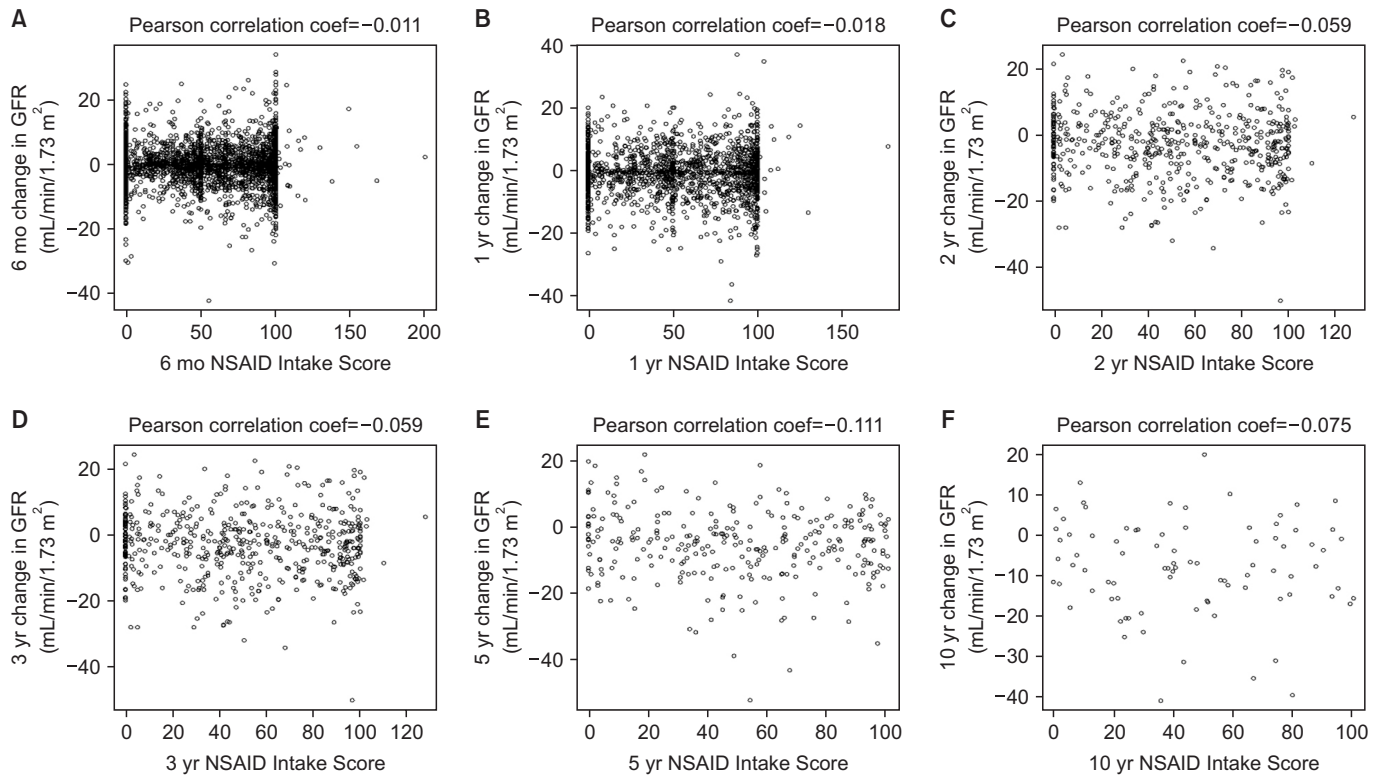
Age group (yr)	Intervals	n	Pearson correlation coefficient	95% CI	p-value
18~40	6 months	20,863	-0.019	-0.032 to -0.005	0.006
	1 year	10,187	-0.021	-0.040 to -0.002	0.034
	2 years	4,829	-0.047	-0.075 to -0.019	0.001
	3 years	3,031	-0.069	-0.105 to -0.034	<0.001
	5 years	1,637	-0.058	-0.107 to -0.010	0.018
	10 years	501	-0.006	-0.093 to 0.082	0.901
40~60	6 months	3,810	-0.011	-0.043 to 0.021	0.496
	1 year	1,860	-0.018	-0.063 to 0.028	0.450
	2 years	884	-0.035	-0.101 to 0.031	0.293
	3 years	551	-0.059	-0.142 to 0.025	0.169
	5 years	291	-0.111	-0.223 to 0.004	0.058
	10 years	85	-0.075	-0.284 to 0.140	0.493
60~80	6 months	229	-0.026	-0.155 to 0.104	0.693
	1 year	110	-0.078	-0.262 to 0.110	0.415
	2 years	52	0.032	-0.243 to 0.302	0.824
	3 years	31	-0.064	-0.409 to 0.297	0.732
	5 years	18	-0.155	-0.580 to 0.336	0.538
	10 years	6	0.795	-0.048 to 0.976	0.059



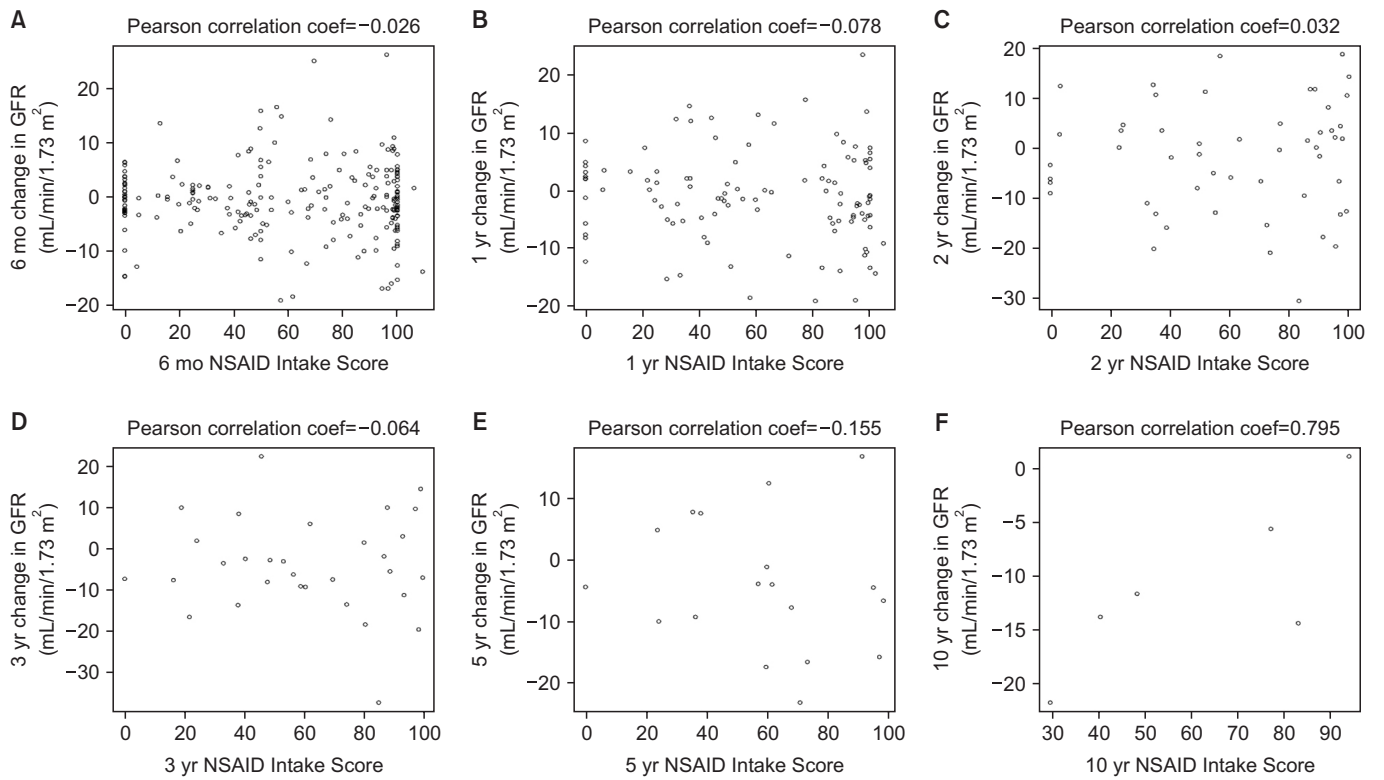
**Supplementary Figure 1.** Change trend of eGFR during follow-up period. eGFR: estimated glomerular filtration rate.



**Supplementary Figure 2.** Scatter plots for NSAID Intake Score and eGFR changes of 6 months (A), 1 year (B), 2 years (C), 3 years (D), 5 years (E), and 10 years (F) interval in patients aged 18 years to less than 40 years. eGFR: estimated glomerular filtration rate, NSAID: nonsteroidal anti-inflammatory drug.



**Supplementary Figure 3.** Scatter plots for NSAID Intake Score and eGFR changes of 6 months (A), 1 year (B), 2 years (C), 3 years (D), 5 years (E), and 10 years (F) interval in patients aged 40 to less than 60 years. eGFR: estimated glomerular filtration rate, NSAID: nonsteroidal anti-inflammatory drug.



**Supplementary Figure 4.** Scatter plots for NSAID Intake Score and eGFR changes of 6 months (A), 1 year (B), 2 years (C), 3 years (D), 5 years (E), and 10 years (F) interval in patients over 60 years of age. eGFR: estimated glomerular filtration rate, NSAID: non-steroidal anti-inflammatory drug.