

**Supplementary Table 1.** Univariate analysis according to subsequent ESRD

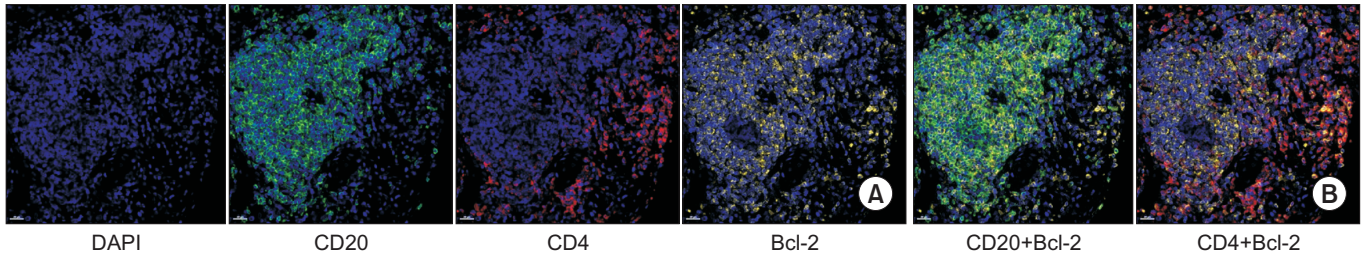
Baseline characteristics	ESRD (n=16)	Renal survival (n=76)	p-value
<b>Clinical characteristics</b>			
Age at lupus nephritis (yr)	36.9±15.7	34.5±14.5	0.556
Sex, female	13 (81.3)	64 (84.2)	0.771
<b>Corticosteroid (mg)</b>			
At kidney bx (n=15 vs. 76)	23.3±30.6	19.5±29.3	0.650
<b>GFR</b>			
At kidney bx	54.5±31.4	88.6±42.9	0.003
<b>Proteinuria (mg)</b>			
At kidney bx (n=14 vs. 73)	3,000±2,092	3,833±3,199	0.353
Anti-dsDNA titer	113±158	319±507	0.005
Anti-dsDNA positive	12 (75.0)	60 (78.9)	0.728
C3 (mg/dL) (n=15 vs. 75)	45.4±19.4	45.1±26.4	0.967
C4 (mg/dL) (n=15 vs. 75)	8.4±6.8	8.6±7.5	0.914
SLEDAI-2K (n=11 vs. 59)	14.2±5.4	18.4±7.8	0.092
<b>Histological characteristics</b>			
<b>NIH activity index (n=15 vs. 76)</b>			
Activity score	6.1±3.6	5.4±3.5	0.482
Chronicity score	3.1±2.5	1.5±2.1	0.009

Values are presented as mean±standard deviation or number (%). ESRD: end stage renal disease, GFR: glomerular filtration rate, C3: complement 3, SLEDAI-2K: systemic lupus erythematosus disease activity index 2000, NIH: National Institute of Health, bx: biopsy.

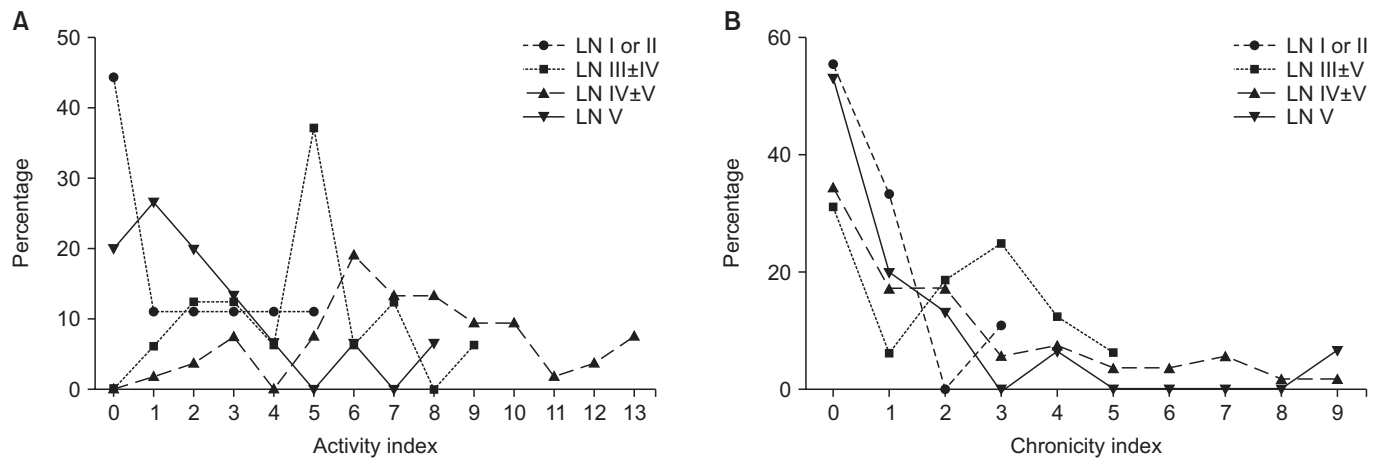
**Supplementary Table 2.** Univariate analysis according to subsequent chronic renal failure

Baseline characteristics	Renal failure (n=18)	Renal survival (n=74)	p-value
<b>Clinical characteristics</b>			
Age at lupus nephritis (yr)	38.4±15.5	34.0±14.4	0.254
Sex, female	14 (77.8)	63 (85.1)	0.119
<b>Corticosteroid (mg)</b>			
At kidney bx (n=17 vs. 74)	20.5±29.6	20.0±29.5	0.946
<b>GFR</b>			
At kidney bx	52.2±30.8	90.1±42.4	<0.001
<b>Proteinuria, mg</b>			
At kidney bx (n=16 vs. 71)	3,283±2,341	3,792±3,198	0.549
Anti ds-DNA titer	101±153	328±512	0.002
Anti-dsDNA positive	13 (65.0)	61 (82.4)	0.091
C3 (mg/dL) (n=16 vs. 74)	48.6±22.7	44.4±25.9	0.550
C4 (mg/dL) (n=16 vs. 74)	9.5±8.0	8.3±7.2	0.564
SLEDAI-2K (n=11 vs. 59)	14.2±5.4	18.4±7.8	0.092
<b>Histological characteristics</b>			
<b>NIH activity index (n=17 vs. 74)</b>			
Activity score	6.3±3.4	5.3±3.5	0.291
Chronicity score	3.2±2.5	1.5±2.0	0.003

Values are presented as mean±standard deviation or number (%). GFR: glomerular filtration rate, C3: complement 3, SLEDAI-2K: systemic lupus erythematosus disease activity index 2000, NIH: National Institute of Health, bx: biopsy.



**Supplementary Figure 1.** B-cell lymphoma-2 (Bcl-2) expression in infiltrating CD4+ and CD20+ lymphocytes on the scanned renal images. Multicolor confocal staining was used to evaluate the co-expression of Bcl-2, CD4, and CD20 (nuclei were stained as DAPI, magnification: 400 ×). Single expression (A) and co-expression images (B).



**Supplementary Figure 2.** The frequency distribution of (A) activity index and (B) chronicity index is demonstrated according to ISN/RPS lupus nephritis classification. ISN/RPS: International Society of Nephrology/Renal Pathology Society, LN: lupus nephritis.