

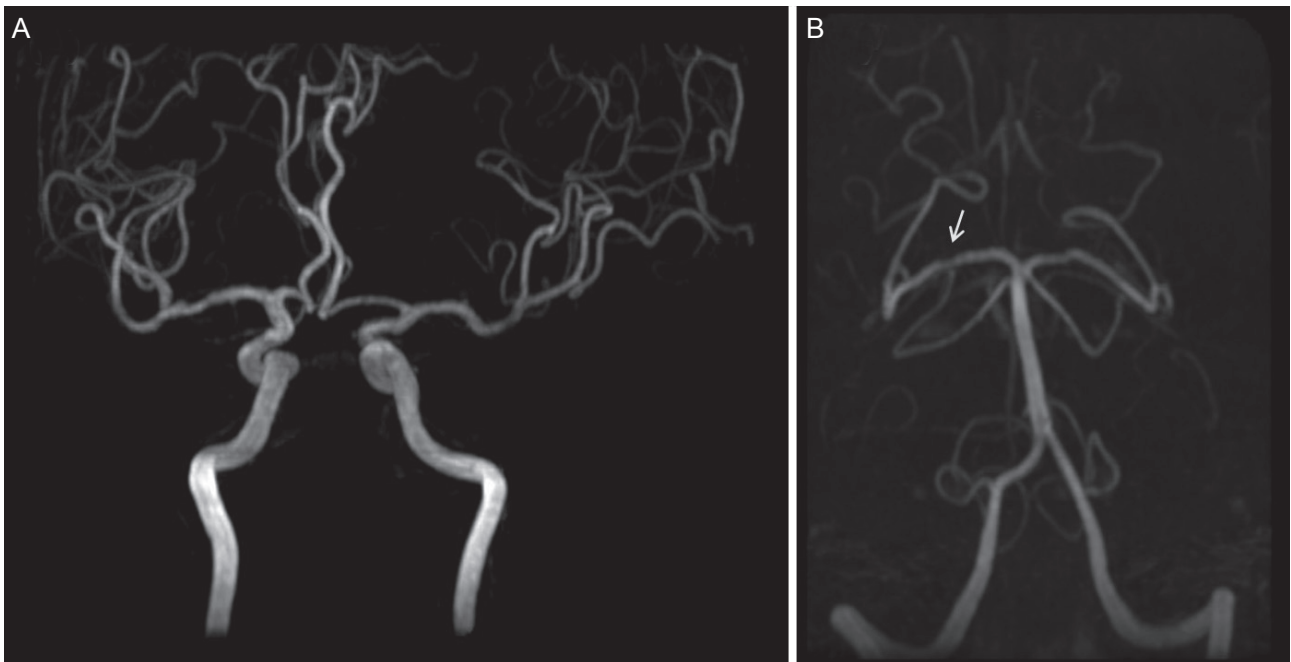
Supplementary Content

Ok T, La YK, Cha HS, Cheon K, Choi BK, Yi GJ, et al. Stroke Recurrence in a Patient Twelve Years after Repair of a Secundum Atrial Septal Defect. *J Neurocrit Care*. Published online August 31, 2018. doi: 10.18700/jnc.180037

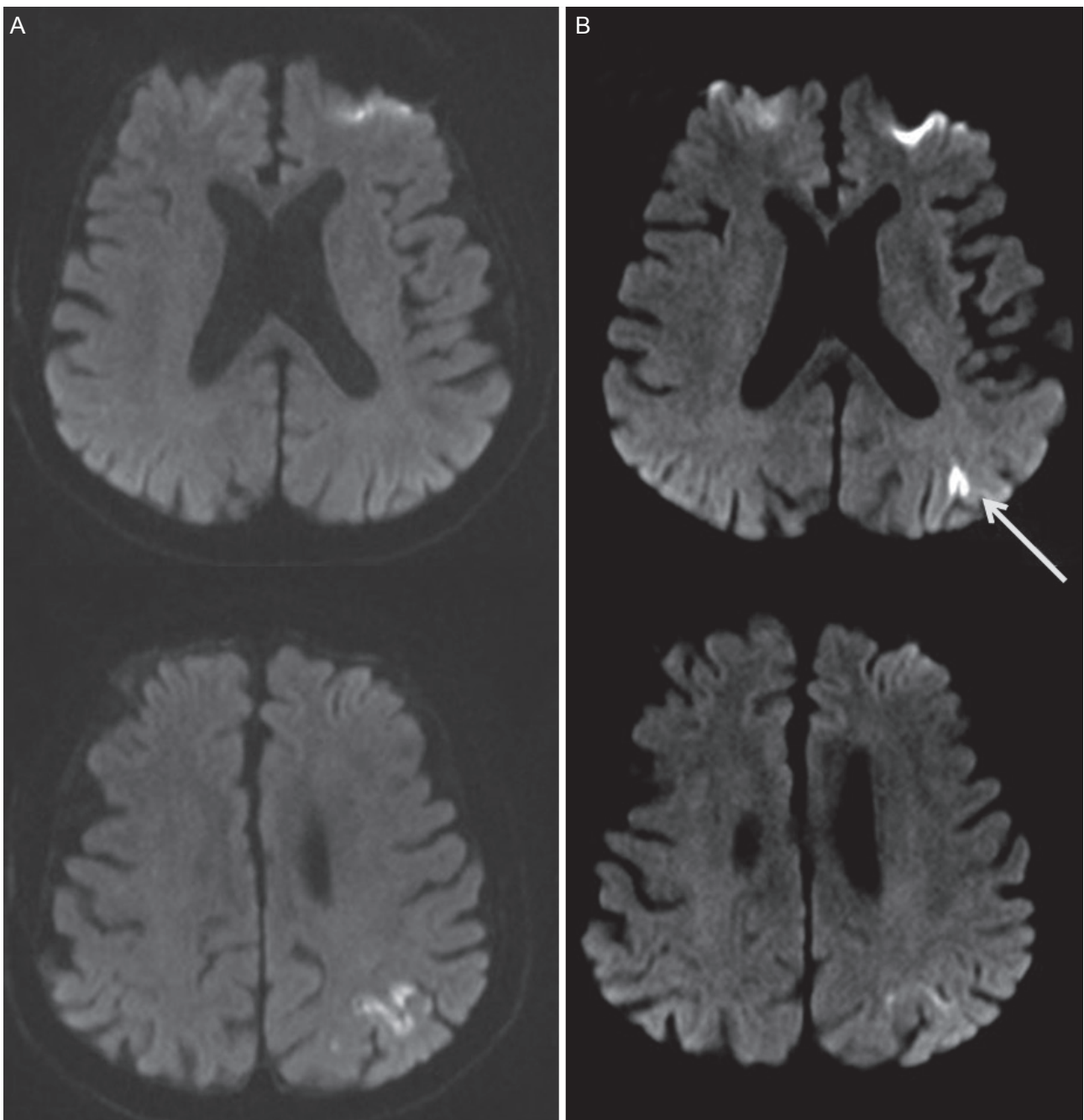
Supplementary Figure 1. Time of flight magnetic resonance angiography of (A) anterior circulation and (B) posterior circulation shows mild stenosis of right posterior cerebral artery (arrow).

Supplementary Figure 2. Diffusion-weighted magnetic resonance images of (A) 2nd ischemic stroke and (B) 3rd ischemic stroke show new acute cerebral infarction on left parieto-occipital lobe (arrow).

This supplementary material has been provided by the authors to give readers additional information about their work.



Supplementary Figure 1. Time of flight magnetic resonance angiography of (A) anterior circulation and (B) posterior circulation shows mild stenosis of right posterior cerebral artery (arrow).



Supplementary Figure 2. Diffusion-weighted magnetic resonance images of (A) 2nd ischemic stroke and (B) 3rd ischemic stroke show new acute cerebral infarction on left parieto-occipital lobe (arrow).