

Fig. S1. (A) Survival curves. (B) Changes in body weight, and (C) food consumption of each group during the experiment. Ten rats per group, but nine rats in the ADSC-CM group. IRI: ischemia-reperfusion injury, ADSC-CM: adipose-derived stem cell-conditioned medium.

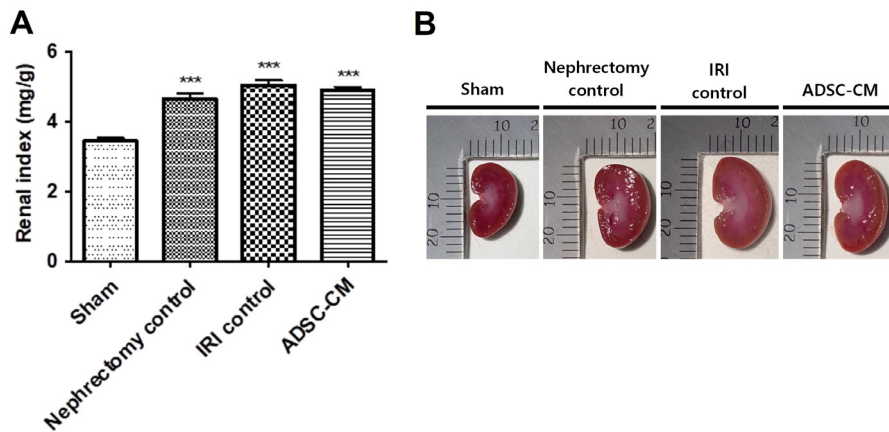


Fig. S2. (A) Renal index of left kidneys after harvest. *** $p < 0.001$ compared with the sham group. (B) Representative pictures of cross-sectioned left kidneys. Ten rats per group, but nine rats in the ADSC-CM group. NS: not significant, IRI: ischemia-reperfusion injury, ADSC-CM: adipose-derived stem cell-conditioned medium.