

Table S1. Primers sequences used in real-time polymerase chain reaction

Genes	Forward primer	Reverse primer	bp
DMP-1	CAGGAAGAGGTGGTGAGTGAGT	TGGATTCGCTGTCTGCTTGCT	160
DSPP	GGAGCCACAAACAGAAGCAACA	TGGACAACAGCGACATCCTCAT	101
GAPDH	CCAGAACATCATCCCTGCCTCT	GACGCCTGCTTCACCACCTT	189
OCN	CCGAGCTCCCAACCACAAT	GCCAGCCTCCAGCACTGTTTA	170
OPN	TGCTACAGACGAGGACATCACC	TCTGGACTGCTTGTGGCTGTG	184
RUNX2	TCCAGACCAGCAGCACTCCATA	TCCATCAGCGTCAACACCATCA	185

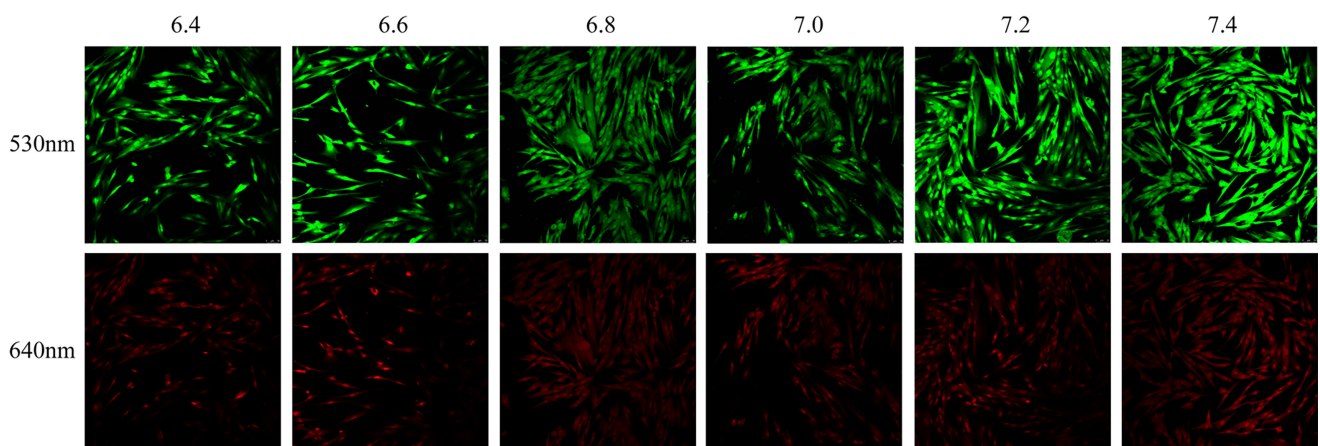


Fig. S1. Different fluorescence intensity at 530 nm and 640 nm under intracellular pH conditions.

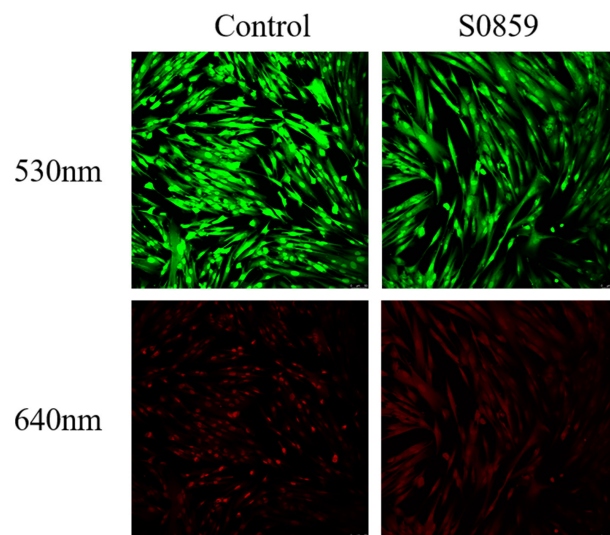


Fig. S2. After cultured with S0859, fluorescence pictures at 530 nm and 640 nm were collected by laser confocal microscope.

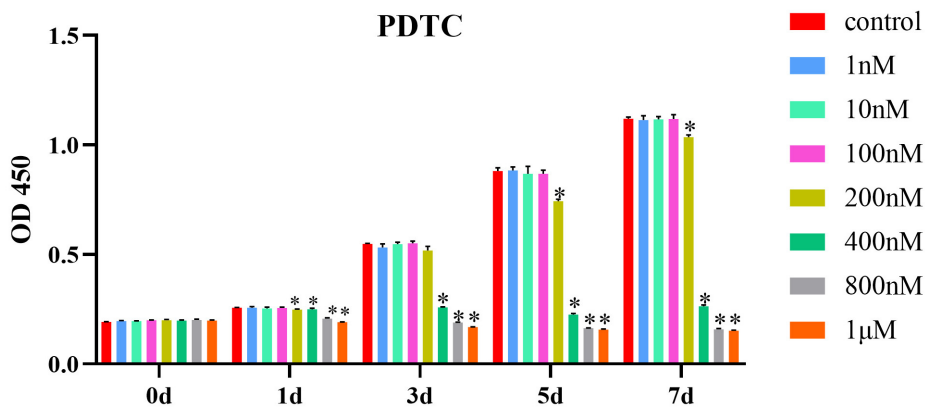


Fig. S3. Effect of PDTC (an inhibitor of NF- κ B pathway) on the proliferation of DPSCs in 0, 1, 3, 5 and 7 days. The concentration of 1 nM and 100 nM did not affect cell proliferation. In comparison, 200 nM and 400 nM significantly inhibited cell proliferation, and the concentration of PDTC at 800 nM and 1 μ M could induce cell apoptosis. 100 nM PDTC was chosen for subsequent experiments (n=3, *p<0.05).