

Fig. S1. Characterization of PSC-MSCs. (A) Detection of CD90 and CD45 by flow cytometry. (B) Detection of CD105 and CD19 by flow cytometry. (C) Detection for proliferation ability of PSC-MSCs.

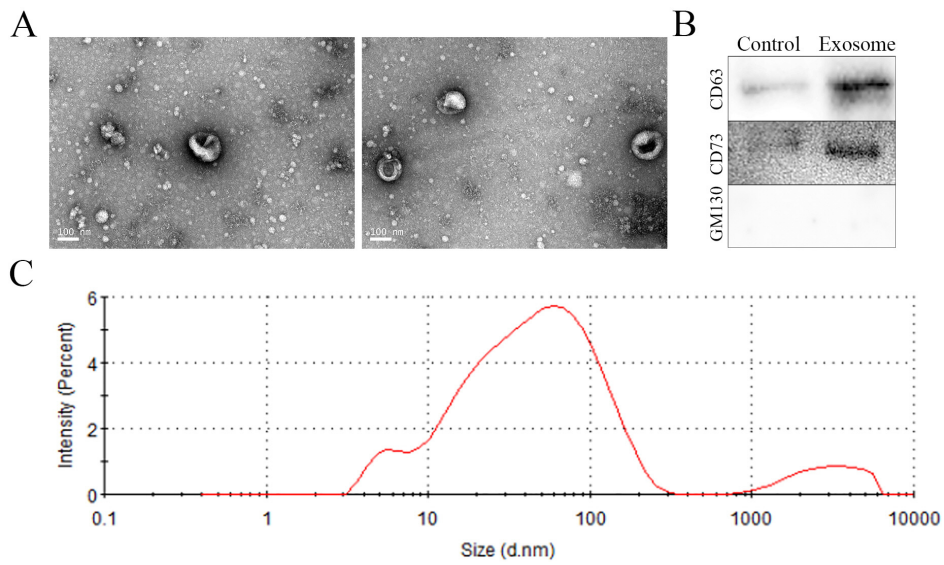


Fig. S2. Characterization of PSC-MSC-Exosomes. (A) Detection of PSC-MSC-Exosomes by TEM. (B) Detection of CD63, and CD73 by western blot. (C) Characterization of PSC-MSC-Exosomes by NTA.

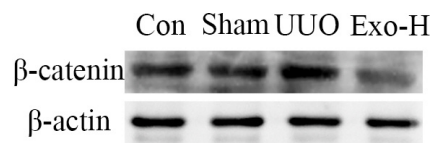


Fig. S3. Western blot analysis of β -catenin protein expression in the different mice.