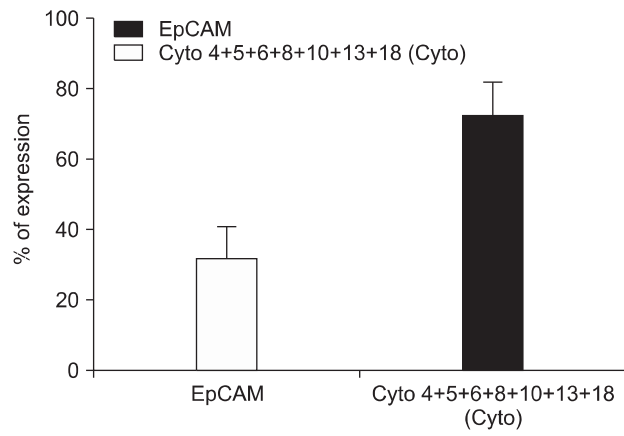
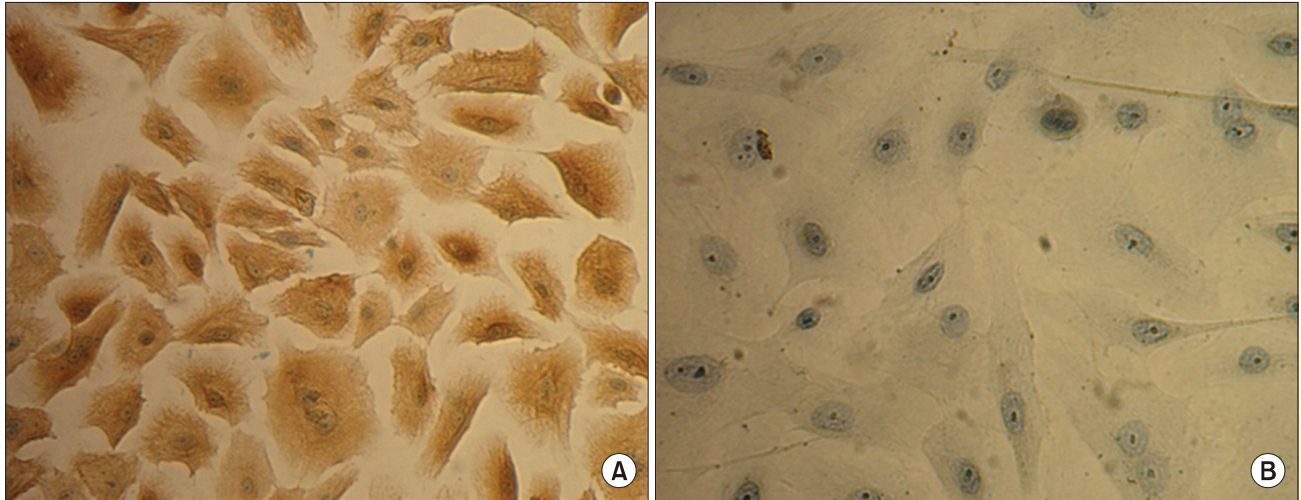


**Table S1.** Scale-Up culture of AME cells in One and two CellSTACK cell culture chamber at P0 and P1 (n=3)

SL	Passage No.	Culture chamber	Cell Number in million
1	P0	One Cell STACK	48.3±3.5
2	P1	Two Cell STACK	103.6±5.68
3	P0	One Cell STACK	45±3.1
4	P1	Two Cell STACK	94.4±9.07

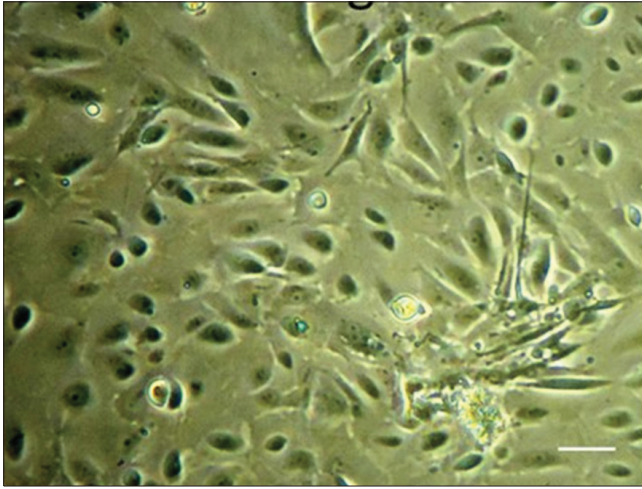


**Fig. S1.** Flow cytometric analysis of PrePO (uncultured cells) of EpCAM and Cytokeratin (n=7).



**Fig. S2.** Immunocytochemistry of AME (A) A representative AE1/AE3 of AME cultured in 5 different culture media (B) control at P1. The staining with anti pan-cytokeratin antibody and the binding of the primary antibody was assessed with the biotinylated secondary antibody using biogenex detection kit. Brown colour indicates positive staining and Hematoxylin was applied as nuclear counterstain. n=3 from each group.

Corning CellSTACKs



Nunc Cell factories

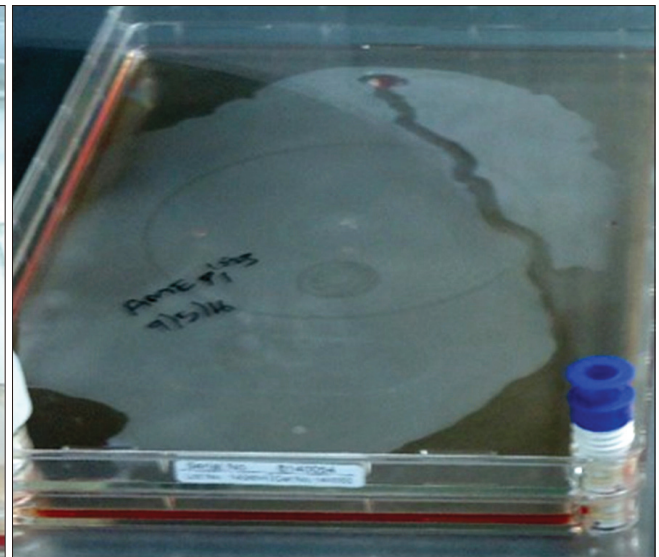
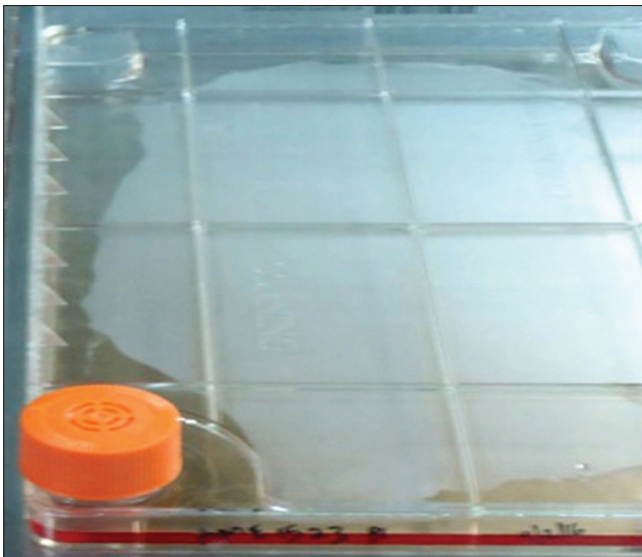
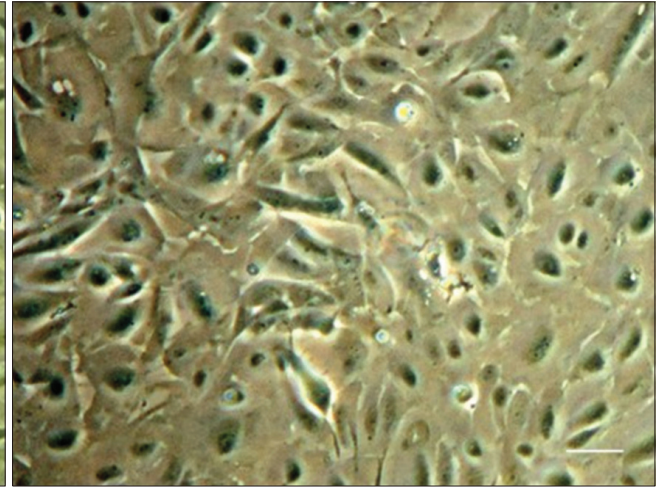


Fig. S3. Large-scale expansion of AME in CellSTACKs and Cell factories.