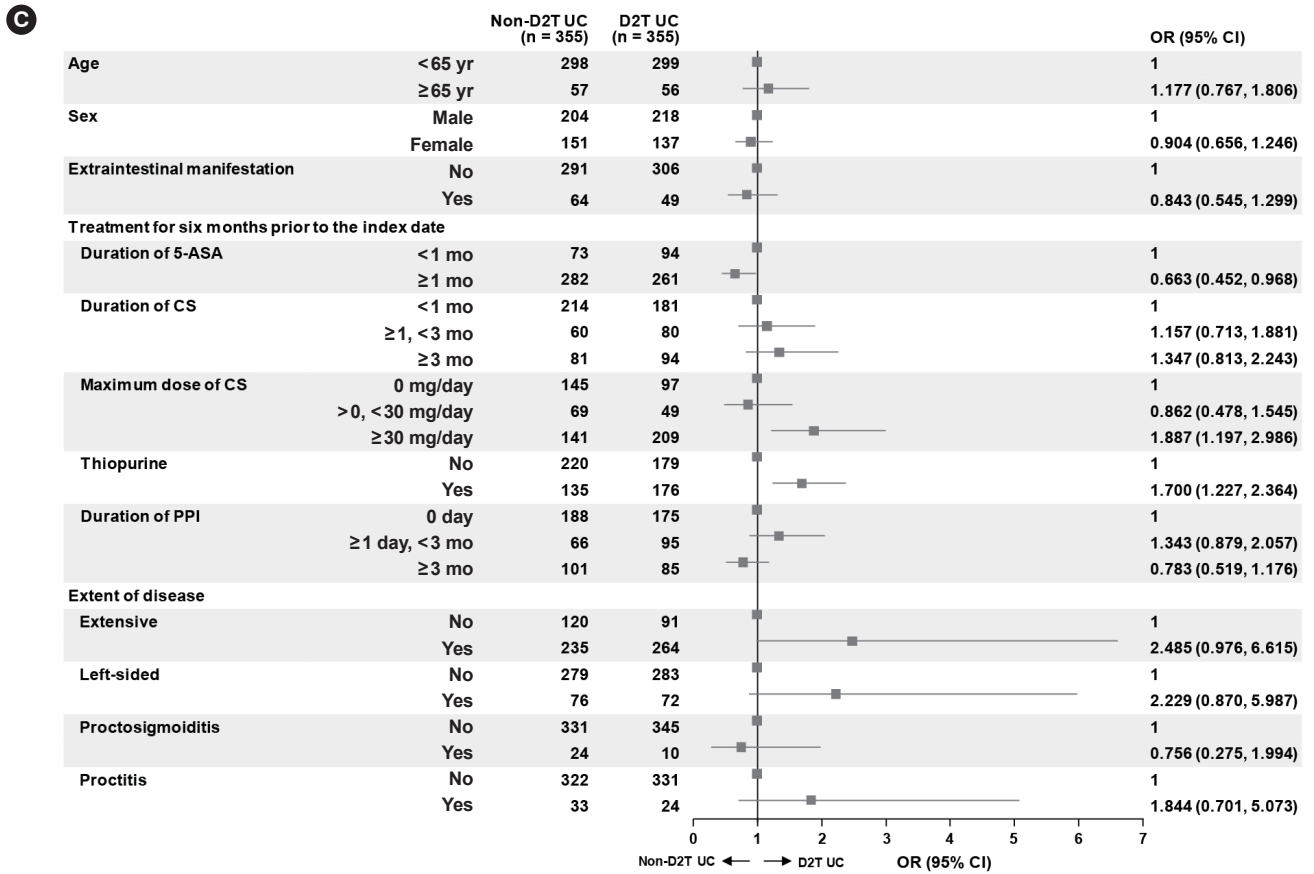


Supplementary Fig. 2. Factors associated with D2T UC and non-D2T UC using multivariate logistic regression by covariates (sensitivity analyses). (A) Results on setting the period for determining D2T UC as 1 year. (B) Results on setting the period for determining D2T UC as three years. (C) Results of adding the extent of disease to the explanatory variable by imputing missing values. D2T, difficult-to-treat; UC, ulcerative colitis; OR, odds ratio; CI, confidence interval; 5-ASA, 5-aminosalicylates; CS, corticosteroids; PPI, proton pump inhibitor.

(Continued to the next page)



Supplementary Fig. 2. Continued