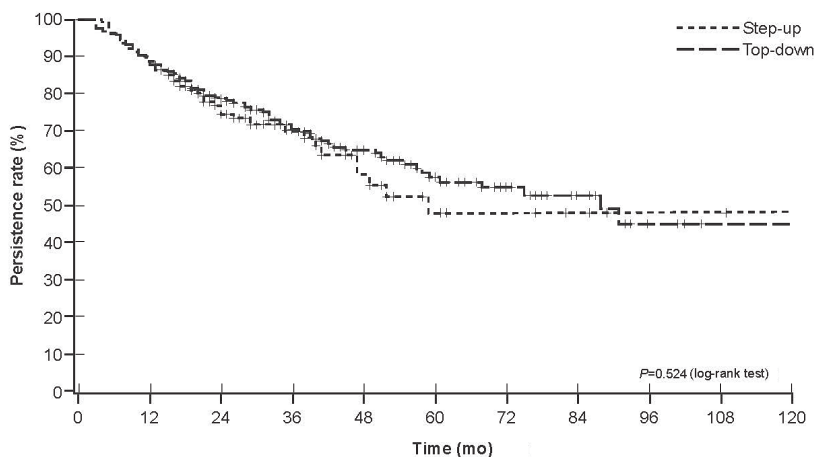
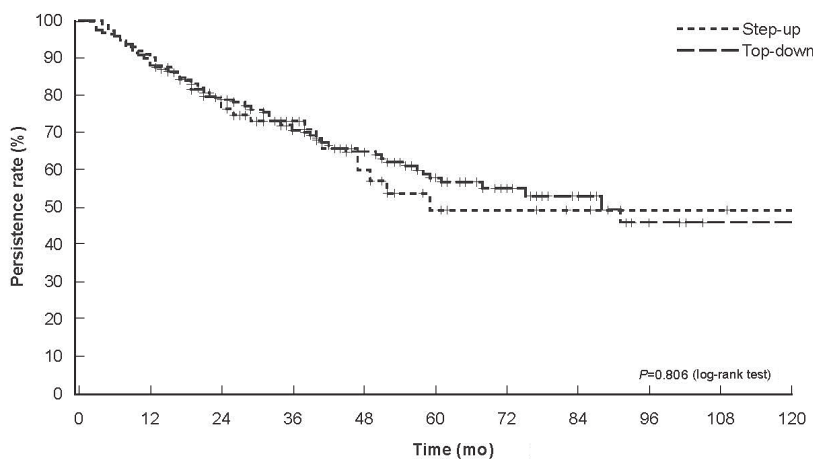


**A** First-line biologic: all types of biologics



Month	0	6	12	18	24	30	36	42	48	54	60	66	72	78	84	90	96	102	108	114	120
<b>Step-up group</b>																					
At risk	141	136	127	95	67	48	37	27	21	14	11	8	8	7	5	3	2	2	2	1	1
Persistence rate (%)	100	95.7	88.7	81.8	74.5	71.8	70.0	63.5	58.0	52.1	47.8	47.8	47.8	47.8	47.8	47.8	47.8	47.8	47.8	47.8	47.8
Lower 95% CI	100	90.8	82.1	74.3	65.6	62.4	60.1	51.7	44.8	39.0	32.6	32.6	32.6	32.6	32.6	32.6	32.6	32.6	32.6	32.6	32.6
Upper 95% CI	100	98.1	92.9	87.3	81.4	79.2	77.9	73.1	69.0	64.5	61.5	61.5	61.5	61.5	61.5	61.5	61.5	61.5	61.5	61.5	61.5
<b>Top-down group</b>																					
At risk	288	277	258	219	173	142	118	92	74	58	49	40	29	21	17	13	9	7	4	4	4
Persistence rate (%)	100	95.8	87.8	83.5	78.5	75.5	70.4	66.4	64.8	61.9	57.4	56.2	54.7	52.5	52.5	48.8	45.0	45.0	45.0	45.0	45.0
Lower 95% CI	100	92.8	83.5	78.6	73.1	69.8	64.1	59.6	57.8	54.5	49.2	47.9	46.0	43.1	43.1	37.5	32.5	32.5	32.5	32.5	32.5
Upper 95% CI	100	97.6	91.1	87.3	82.9	80.3	75.8	72.3	70.9	68.5	64.8	63.8	62.6	61.1	61.1	59.2	56.8	56.8	56.8	56.8	56.8

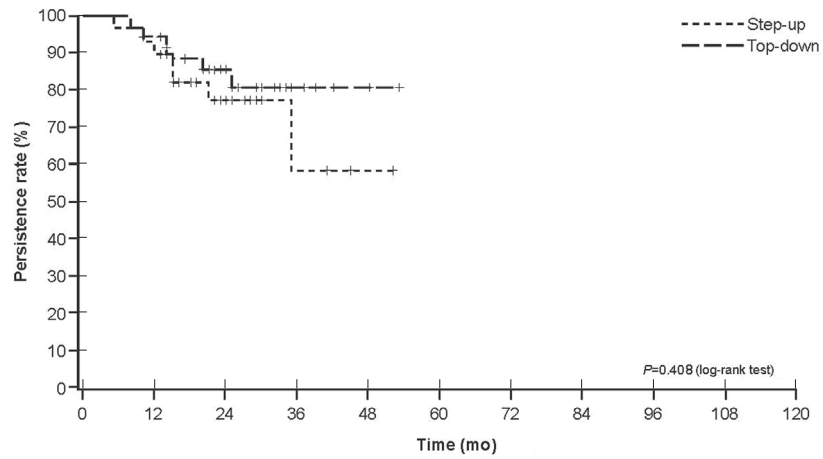
**B** First-line biologic: anti-TNF (IFX or ADA)



Month	0	6	12	18	24	30	36	42	48	54	60	66	72	78	84	90	96	102	108	114	120
<b>Step-up group</b>																					
At risk	109	106	99	75	53	41	34	25	20	14	11	8	8	7	5	3	2	2	2	1	1
Persistence rate (%)	100	96.3	89.9	84.0	75.8	72.5	72.5	65.1	59.1	52.9	48.5	48.5	48.5	48.5	48.5	48.5	48.5	48.5	48.5	48.5	48.5
Lower 95% CI	100	90.5	82.5	75.5	65.5	61.5	61.5	51.9	44.7	37.6	32.3	32.3	32.3	32.3	32.3	32.3	32.3	32.3	32.3	32.3	32.3
Upper 95% CI	100	98.6	94.3	89.8	83.4	80.8	80.8	75.4	71.0	66.0	62.9	62.9	62.9	62.9	62.9	62.9	62.9	62.9	62.9	62.9	62.9
<b>Top-down group</b>																					
At risk	246	237	221	190	154	129	112	89	72	58	49	40	29	21	17	13	9	7	4	4	4
Persistence rate (%)	100	95.9	87.8	83.5	78.3	75.5	70.0	65.9	64.2	61.4	56.9	55.7	54.2	52.0	52.0	48.3	44.6	44.6	44.6	44.6	44.6
Lower 95% CI	100	92.6	83.0	78.2	72.4	69.3	63.2	58.7	56.8	53.6	48.5	47.2	45.4	42.5	42.5	37.0	32.1	32.1	32.1	32.1	32.1
Upper 95% CI	100	97.8	91.3	87.6	83.1	80.6	75.8	72.1	70.7	68.2	64.4	63.4	62.2	60.7	60.7	58.8	56.4	56.4	56.4	56.4	56.4

**Supplementary Fig. 1.** Persistence of a first-line biologic in newly diagnosed Crohn's disease (biologic group). Step-up group (patients receiving an SCS prescription before a biologic) and top-down group (patients receiving a biologic without a prior SCS prescription) for all biologics (A); and by TNF- $\alpha$  inhibitors and other (B, C). SCS, systemic corticosteroid; TNF, tumor necrosis factor; IFX, infliximab; ADA, adalimumab; CI, confidence interval. (Continued to the next page)

**© First-line biologic: ustekinumab**



Month	0	6	12	18	24	30	36	42	48	54	60	66	72	78	84	90	96	102	108	114	120	
<b>Step-up group</b>																						
At risk	29	28	27	20	14	7	3	2	1													
Persistence rate (%)	100	96.6	89.7	82.2	77.3	77.3	58.0	58.0	58.0													
Lower 95% CI	100	77.9	71.3	62.3	55.9	55.9	19.2	19.2	19.2													
Upper 95% CI	100	99.5	96.5	82.2	89.3	89.3	83.5	83.5	83.5													
<b>Top-down group</b>																						
At risk	36	36	34	28	18	13	6	3	2													
Persistence rate (%)	100	100	94.4	88.6	85.5	80.4	80.4	80.4	80.4													
Lower 95% CI	100	100	79.6	72.5	68.5	60.5	60.5	60.5	60.5													
Upper 95% CI	100	100	98.6	95.6	93.7	91.0	91.0	91.0	91.0													

Supplementary Fig. 1. Continued