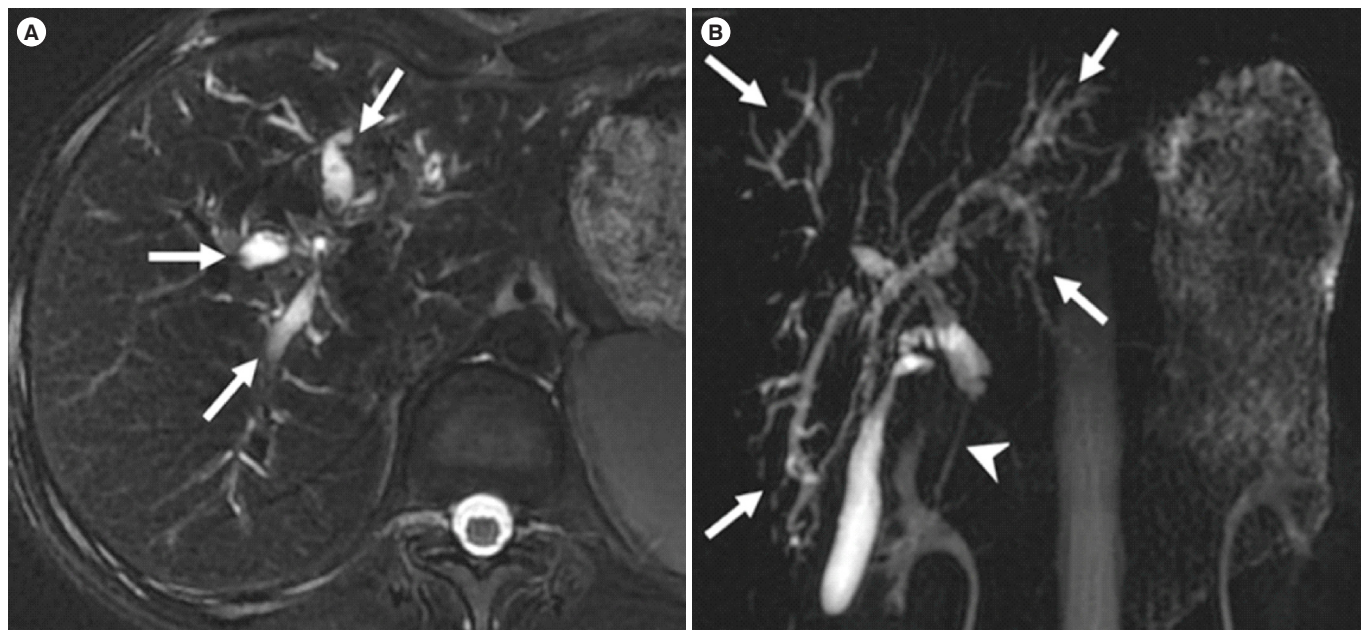


See “Association of young age and male sex with primary sclerosing cholangitis in Taiwanese patients with inflammatory bowel disease” on pages 213-230.



**Supplementary Fig. 1.** Images of a 24-year-old man with ulcerative colitis and primary sclerosing cholangitis. (A) Axial T2-weighted magnetic resonance imaging with fat suppression shows dilated bilateral intrahepatic bile ducts (arrows) with stenosis at hepatic hilum. (B) Coronal thick slab magnetic resonance cholangiopancreatography shows dilated bilateral intrahepatic bile ducts (arrows) with stenosis at hepatic hilum. There is also a segmental narrowing of the common bile duct (arrowhead).