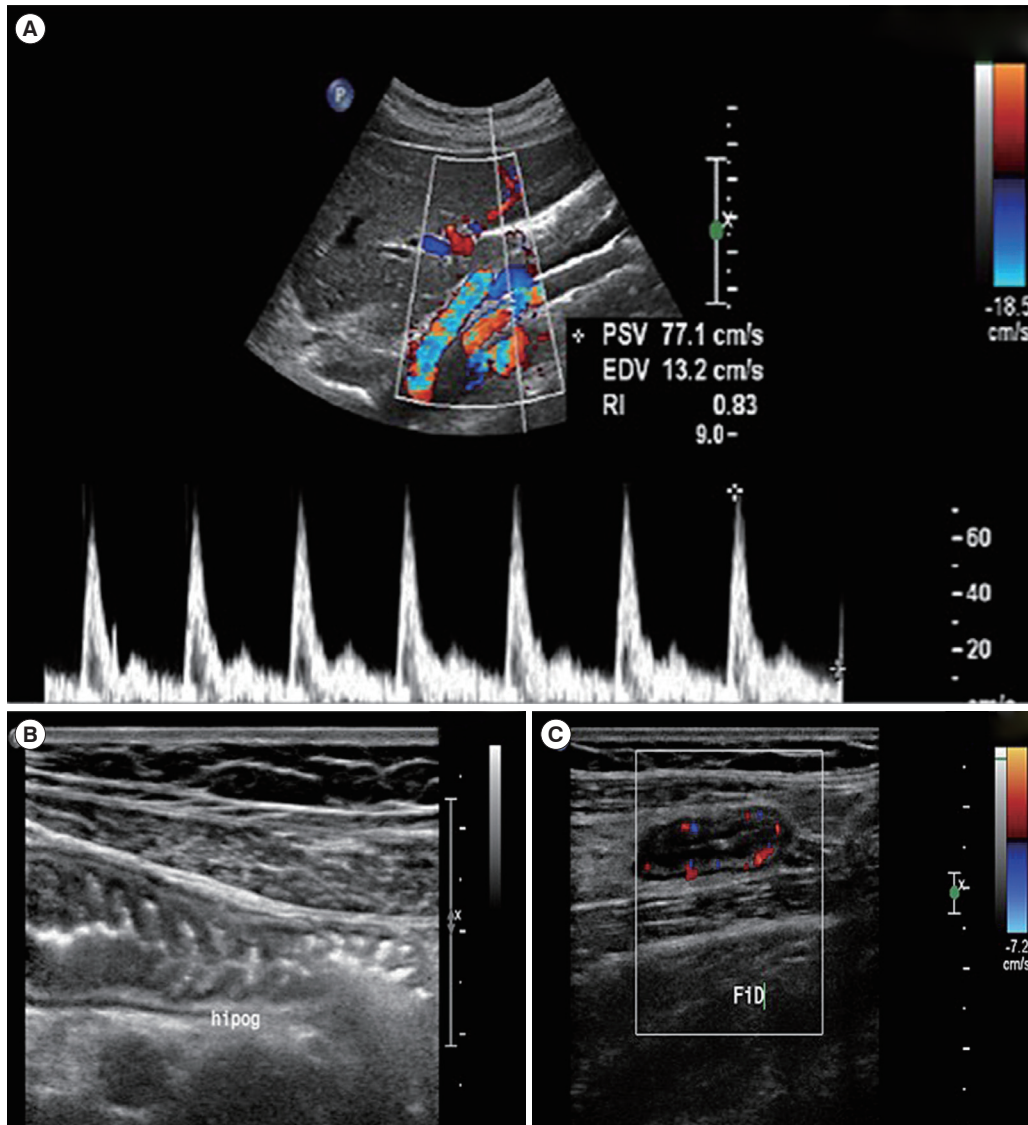


See “Abdominal ultrasonography with color Doppler analysis in the assessment of ileal Crohn’s disease: comparison with magnetic resonance enterography” on page 227-236.



Supplementary Fig. 1. Example of color Doppler image acquisition and analysis. Screen capture during examination of the ileum, displaying automated calculation of resistive index (RI) (A); normal ileal loop (B); and ileal hyperemia detected by color Doppler (C). PSV, peak-systolic velocity; EDV, end-diastolic velocity.