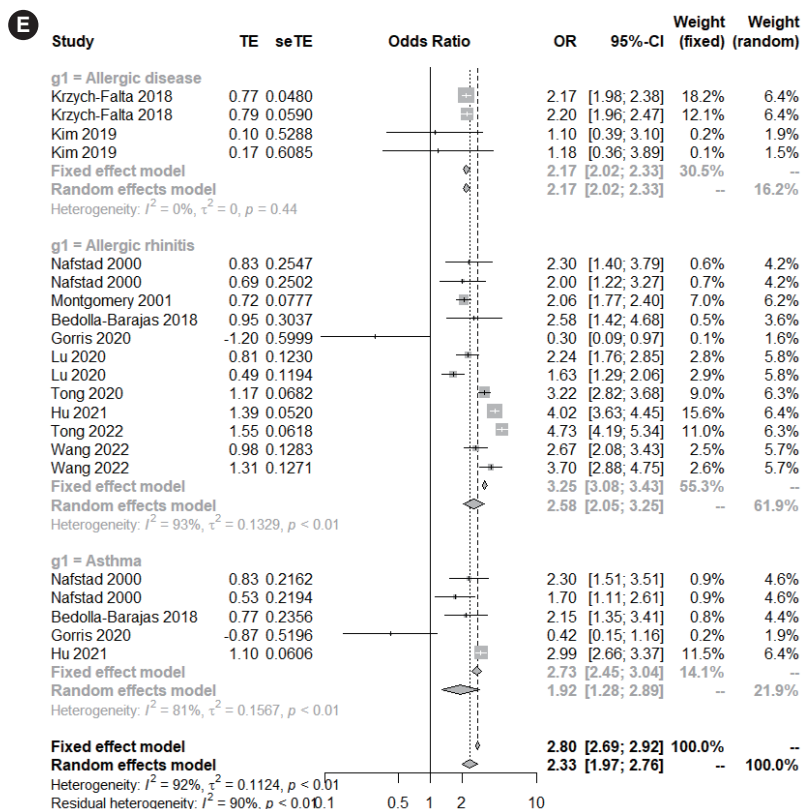
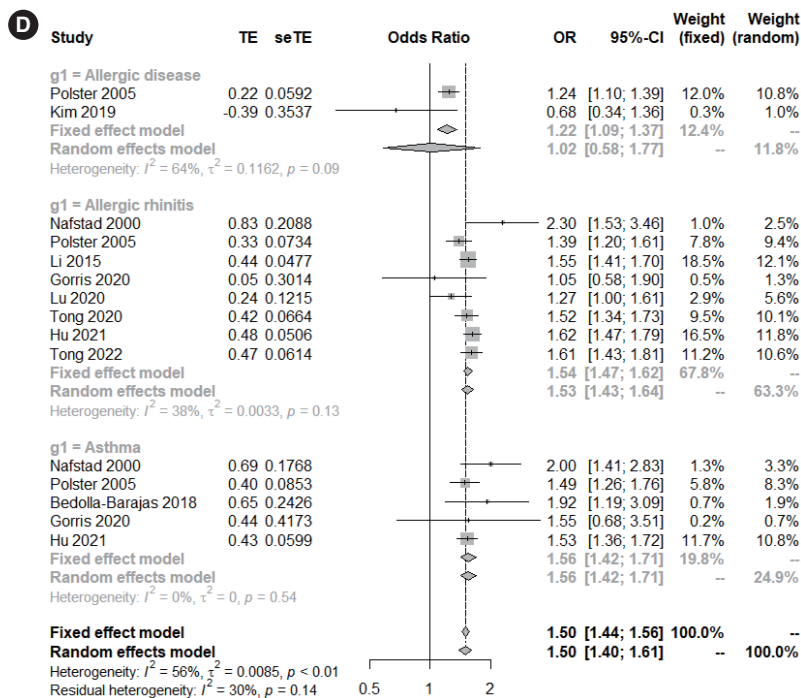
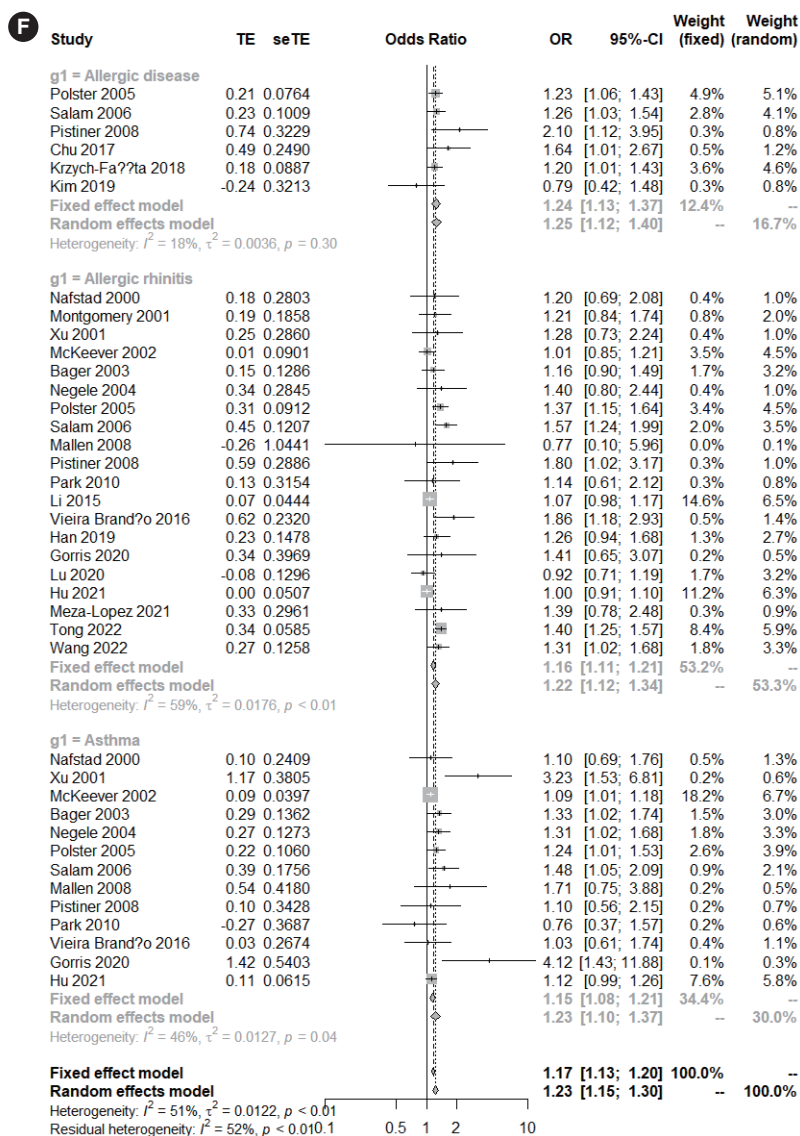


Supplementary Fig. 1. Odds ratios of birth-related exposures associated with risk of allergic rhinitis and asthma. (A) Low birth weight. (B) Maternal age above 35 years. (C) Prematurity (under 37 weeks of gestation). (Continued to the next page)



Supplementary Fig. 1. (Continued) (D) Male sex. (E) Family history of allergy.

(Continued to the next page)



Supplementary Fig. 1. (Continued) (F) Cesarean delivery. TE, estimate of treatment effect; seTE, standard error of treatment estimate; OR, odds ratio; CI, confidence interval.