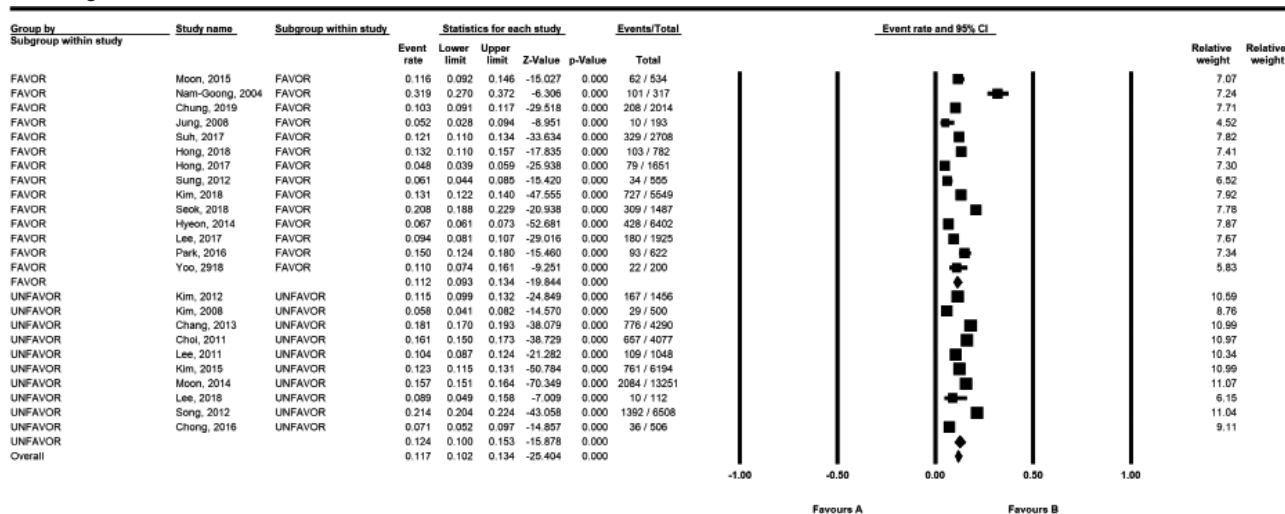
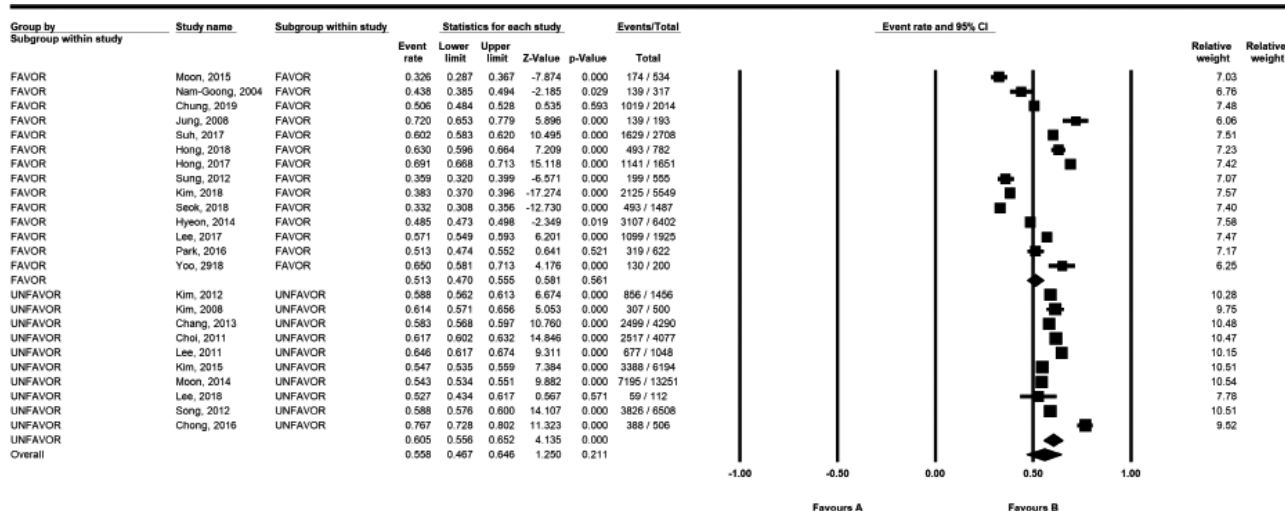


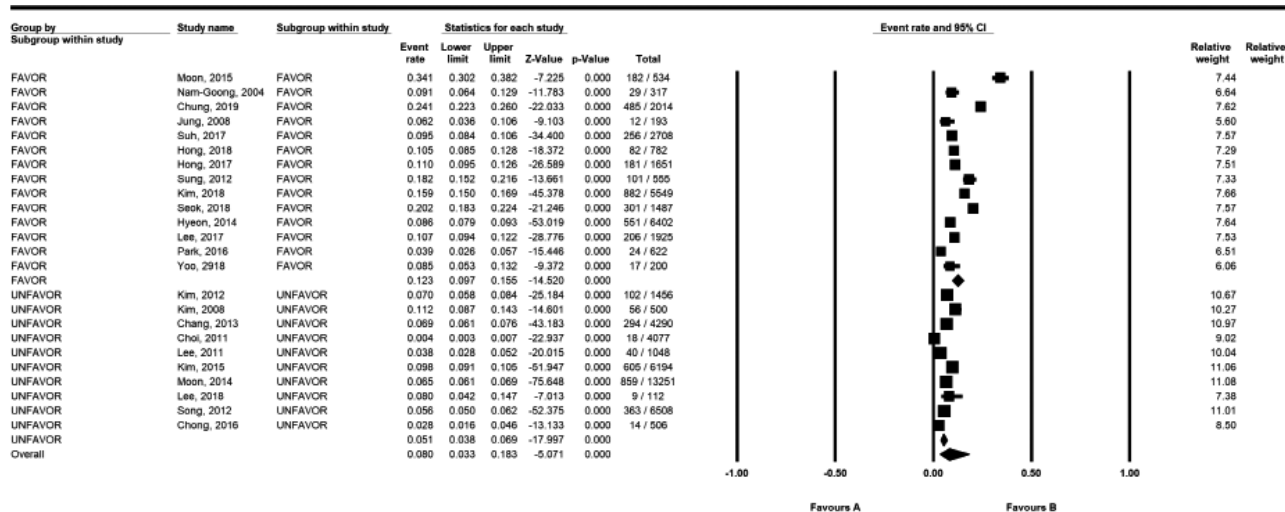
Non-diagnostic results



Benign results

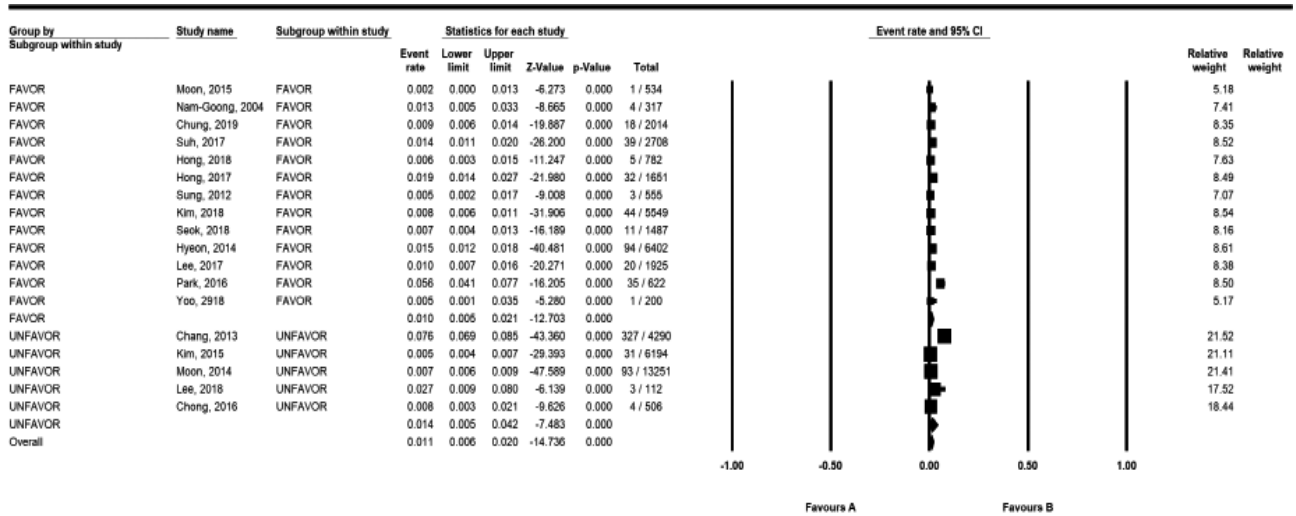


AUS/FLUS results

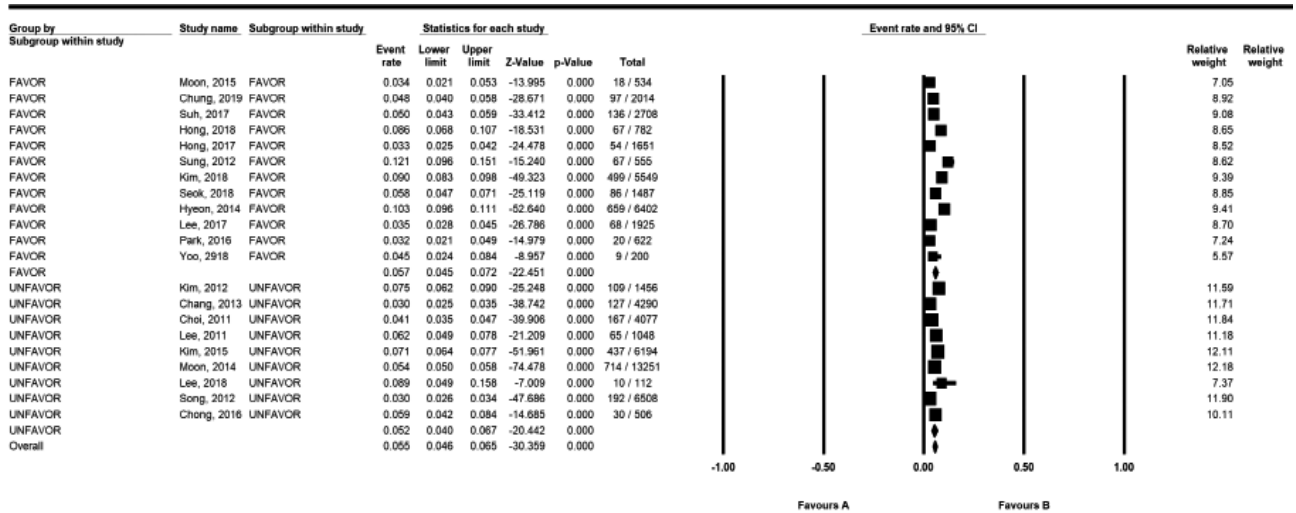


Supplementary Fig. 3. Forest plot for proportional analysis of rate for the diagnosis according to the Bethesda system; comparison between institute favoring and un-favoring CNB. (A) Non-diagnostic results. (B) Benign results. (C) Atypia of undetermined significance/follicular lesion of undetermined significance (AUS/FLUS) results. (Continued to the next page)

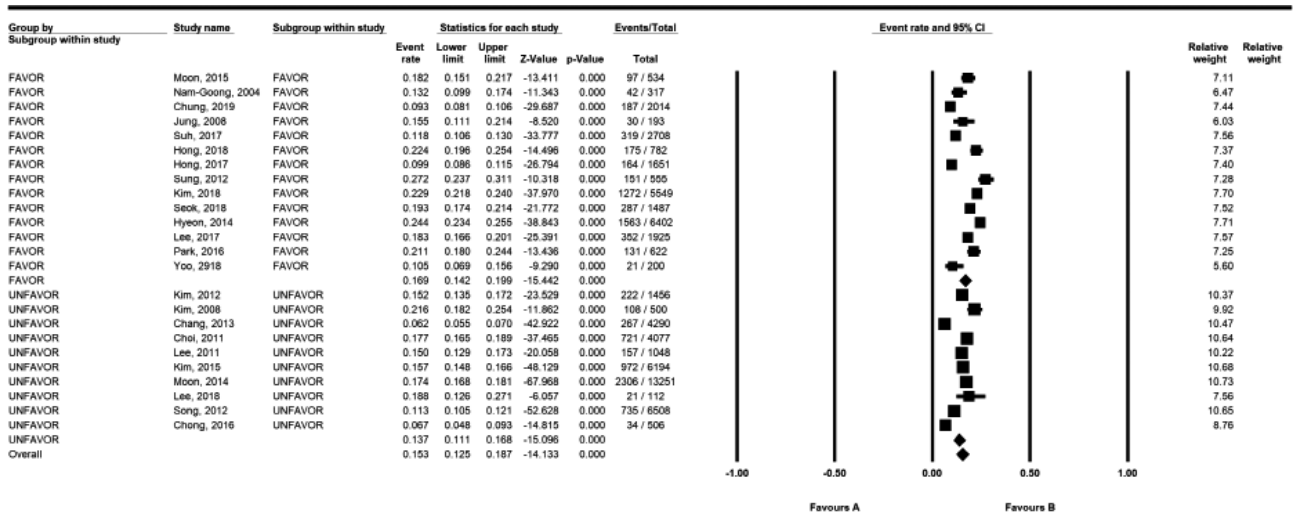
FN/SFN results



Suspicious for malignancy



Malignancy



Supplementary Fig. 3. (Continued) (D) Follicular neoplasm/suspicious for follicular neoplasm (FN/SFN) results. (E) Suspicious for malignancy. (F) Malignancy. CI, confidence interval.