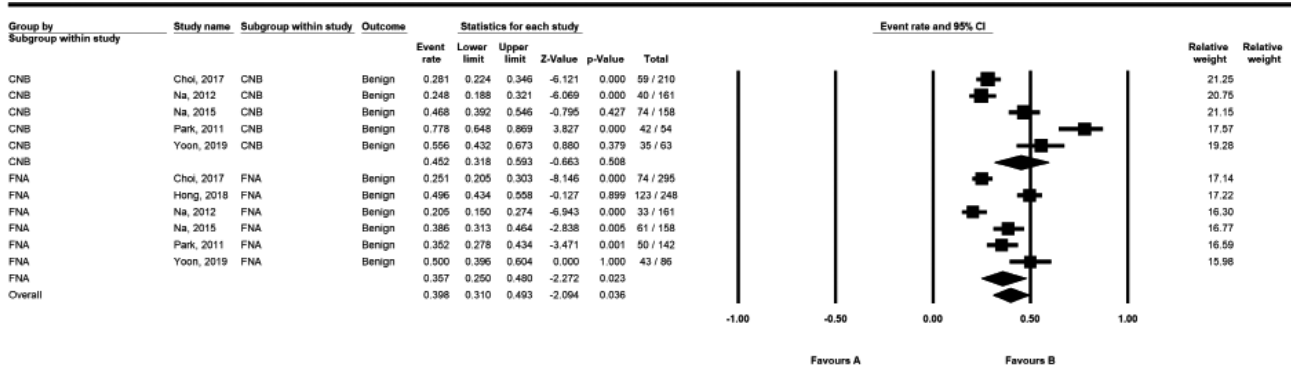
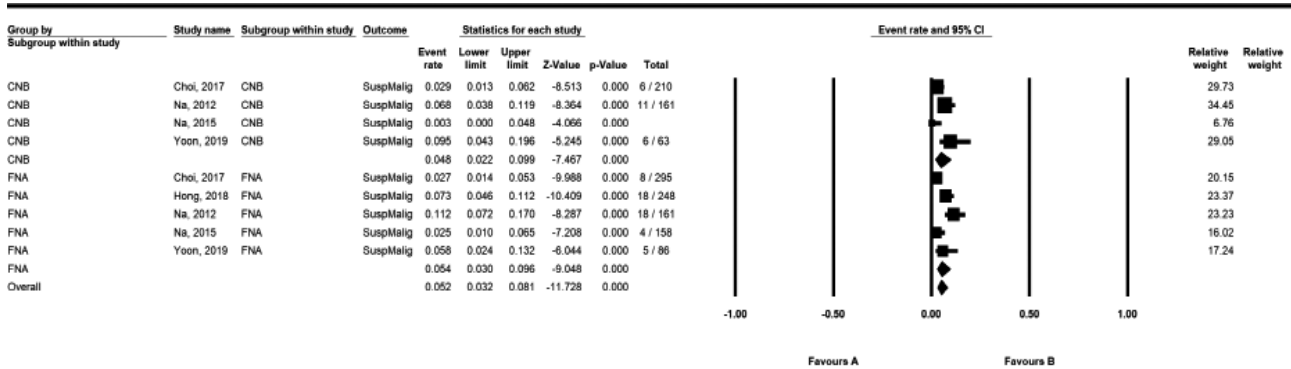


Benign ($P=1.000$)



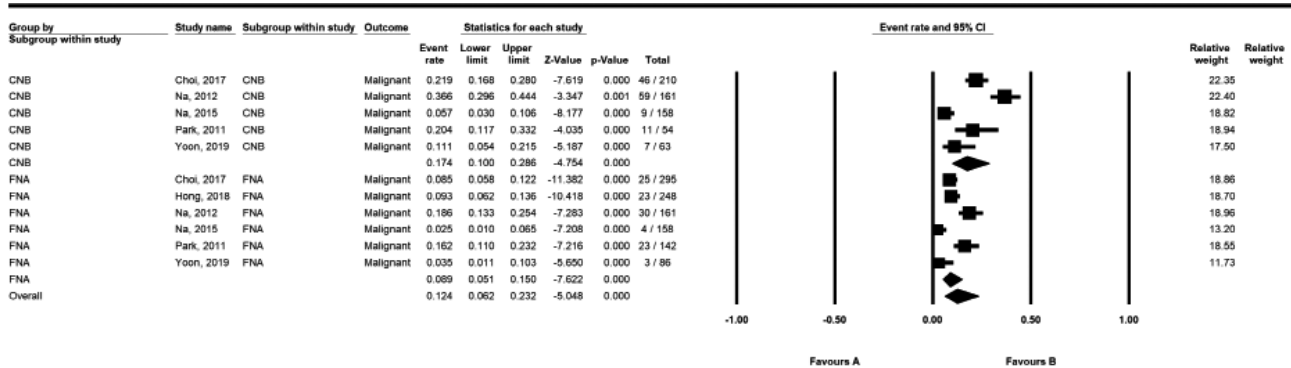
A

Suspicious for malignancy ($P=1.000$)



B

Malignant ($P=0.420$)



C

Supplementary Fig. 2. Forest plot of proportional meta-analysis in initially atypia of undetermined significance/follicular lesion of undetermined significance (AUS/FLUS) nodules. (A) Benign. (B) Suspicious for malignancy. (C) Malignant. CI, confidence interval.