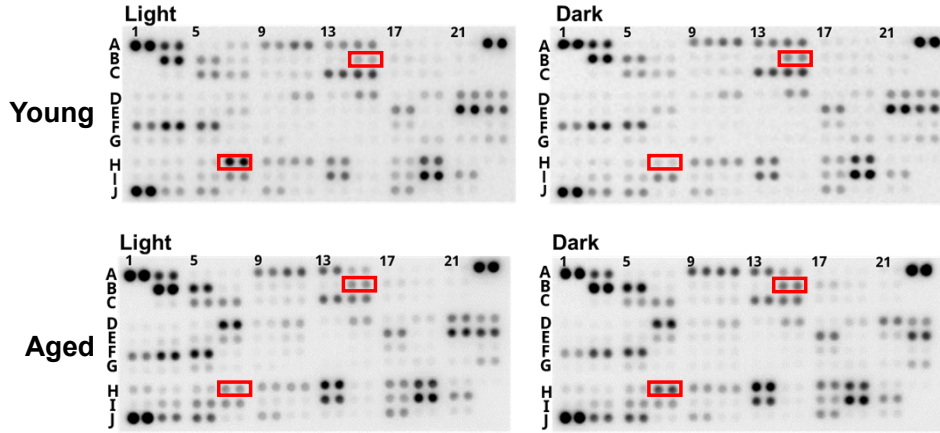


Supplementary Fig. 1. Diurnal expression changes of FMO2 in the striatum of young female brains during the light and dark phases. Representative immunofluorescence staining for FMO2 (green), DAPI (blue), and merged images in the striatum of young female mice during the light (10:00 PM) and the dark (10:00 PM) phases. A red box in the diagram of the brain section indicate the area of image analysis. Representative images were obtained from one set of experiments, and three experiments were performed independently. Scale bar = 50 μm. FMO2, flavin-containing monooxygenase 2.

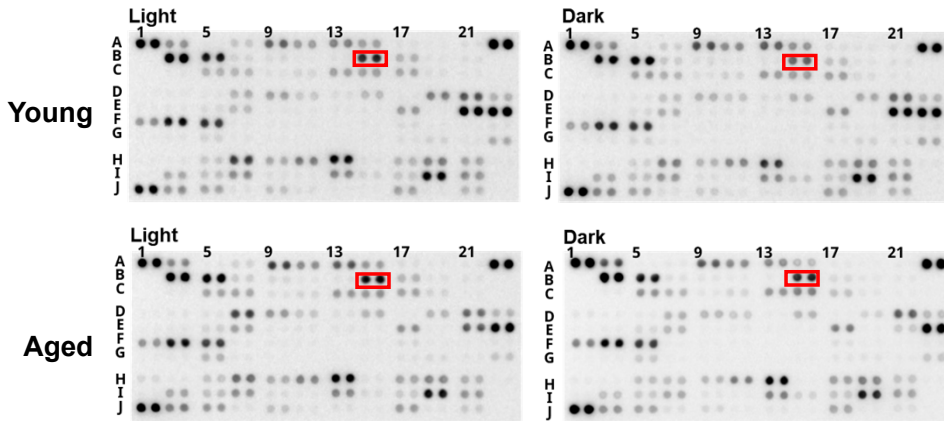
A

	1	2	3	4	5	6	7	8	9	10	11	12	13	14	15	16	17	18	19	20	21	22	23	24
A	Reference Spots	Adiponectin	Amphiregulin	Angiopoietin-1	Angiopoietin-2	ANGPTL3	BAFF								CD83		CCL2		CCL3/CCL4		CCL5			Reference Spots
B	Blank	CCL8	CCL11	CCL12	CCL17	CCL19	CCL20	CCL21	CCL22	CD14	CD40										CD14	CD40		Blank
C	Blank	CD180	Chemerin	Chil1		Tissue factor	C5a	CFD	CRP								CX3CL1		CXCL1		CXCL2			Blank
D	CXCL9	CXCL10	CXCL11	CXCL13	CXCL16	Cystatin C	DKK-1	CD28	EGF	CD105	Endostatin	FcγRIIIA												
E	FGF1	FGF21	Flt-3ligand	Ga8	G-CSF	GDF-15	GM-CSF	HGF	ICAM-1	IFN-γ	IGFBP-1	IGFBP-2												
F	IGFBP-3	IGFBP-5	IGFBP-6	IL-1α	IL-1β	IL-1ra	IL-2	IL-3	IL-4	IL-5	IL-6	IL-7												
G	IL-10	IL-11	IL-12p40	IL-13	IL-15	IL-17A	IL-22	IL-23	IL-27	IL-27p28	IL-28A/B	IL-33	LDLR											
H	Leptin	LIF	Lipocalin-2	LIX	M-CSF	MMP-2	MMP-3	MMP-9	MPO	Osteopontin	Osteoprotegerin	P-DECFG												
I	PDGF-BB	Pentraxin 2	Pentraxin 3	Perlecan	Pre-I	proliferin	PCSK9	RAGE	RBP4	Reg3G	Resistin	Blank												
J	Reference Spots	E-selectin	P-selectin	Serp1n E1	Serp1n F1	Thrombopoietin	TIM-1	TNF-α	VCAM-1	VEGF	WSP-1	Negative control												

B Male Blood



C Female Blood



Supplementary Fig. 2. No age-related changes in plasma CCL21 expression during the light and dark phases. (A) Coordinate map showing the alignment of 111 mouse cytokines on the array. Representative cytokine array blots for plasma samples from young and aged male (B) and female (C) mice collected during the light and dark phases. The red rectangles indicate CCL21.