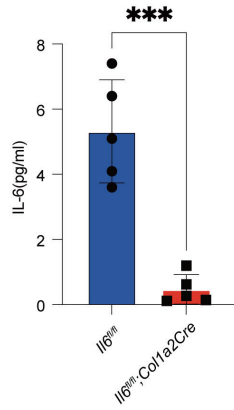
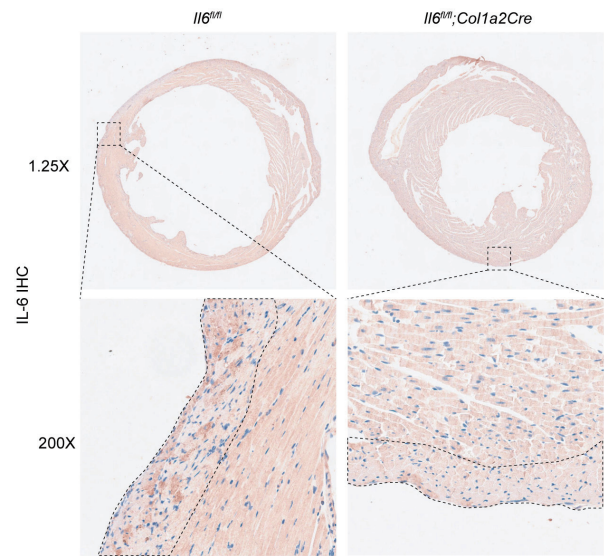
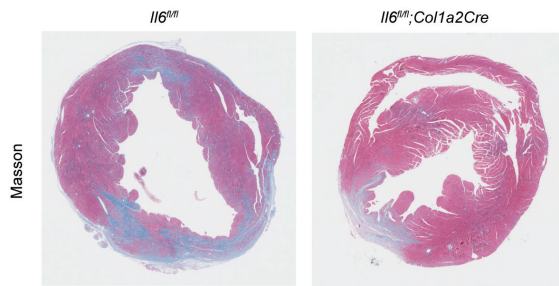
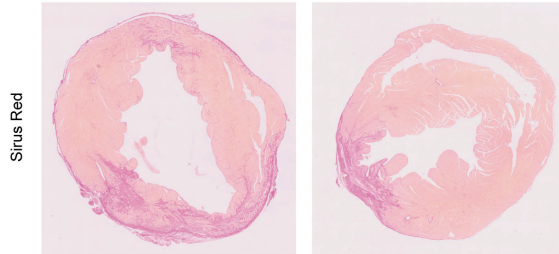
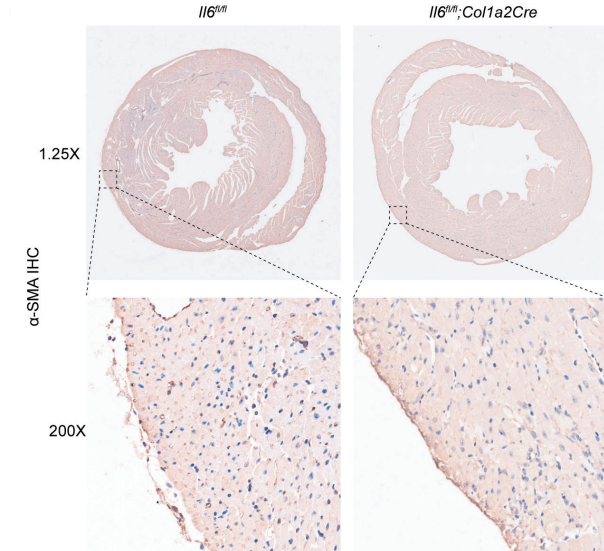


A**B****C****D****E**

Supplementary Fig. 1. Fibroblast-derived interleukin-6 (IL-6) exacerbates adverse cardiac remodeling after myocardial infarction. (A) ELISA of IL-6 production in supernatants of isolated fibroblasts from KO or WT mice. (B) Representative IL-6 immunohistochemical staining images in myocardial tissues from *Il6* KO or WT mice at day 14 after MI. (C) Representative Masson's Trichrome staining images in myocardial tissues from *Il6* KO or WT mice at day 14 after MI. (D) Representative Sirius Red staining images in myocardial tissues from *Il6* KO or WT mice at day 14 after MI. (E) Representative α -SMA immunohistochemical staining images in myocardial tissues from *Il6* KO or WT mice at day 14 after MI. Data presented as mean \pm SD. Unpaired Student's t-test was performed. MI, myocardial infarction; KO, knockout; WT, wildtype; α -SMA, α -smooth muscle actin. *** $p < 0.001$.