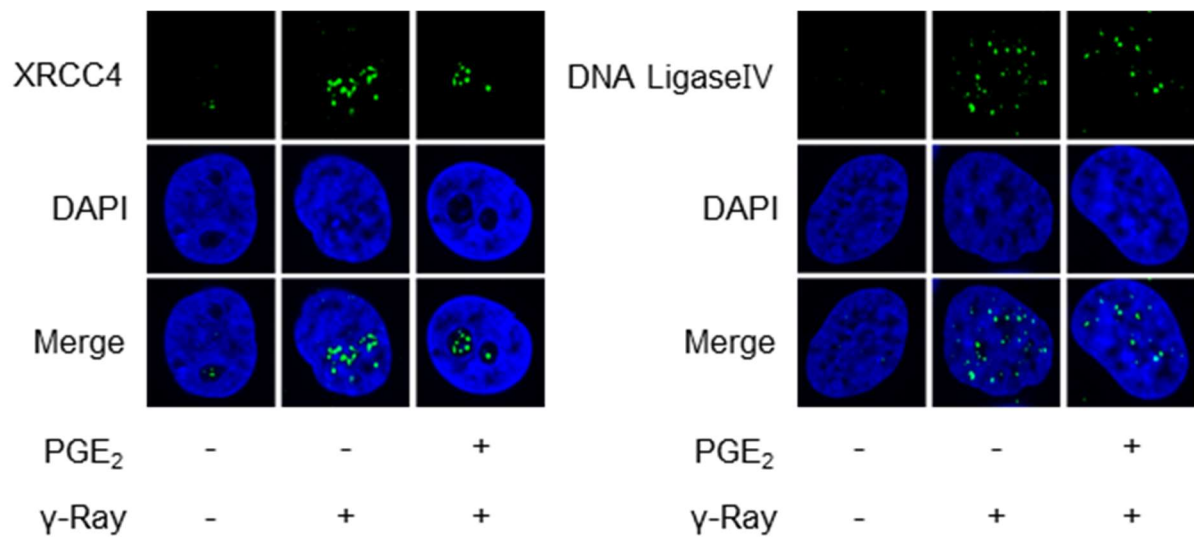


Supplementary Fig. S4



Supplementary Fig. 4. Effects of PGE₂ on recruitment of XRCC4, DNA-Ligase IV following γ -ray irradiation in A549 cells. The cells were treated with 20 μ M PGE₂ for 30 min before irradiation with γ -rays (5 Gy) and incubated for 1 h. The irradiated cells were harvested and reacted with antibodies against XRCC4 or DNA-ligase IV, followed by DAPI staining. The stained cells were analyzed by confocal microscopy. Green color represents XRCC4 and DNA-Ligase IV, and blue color represents DAPI stained nucleus (100-fold amplification).