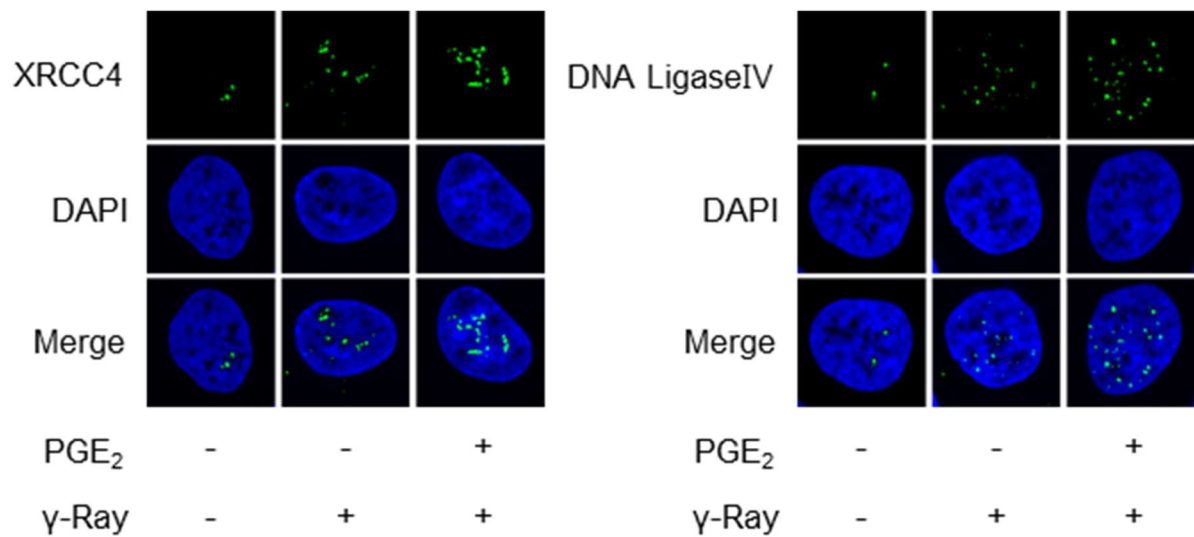


## Supplementary Fig. 2



**Supplementary Fig. 2. Effects of PGE<sub>2</sub> on the recruitment of XRCC4 and DNA-ligase IV following  $\gamma$ -ray irradiation in SK-MEL-28 cells.** The cells were treated with 20  $\mu$ M PGE<sub>2</sub> for 30 min before irradiation with  $\gamma$ -rays (5 Gy) and incubated for 1 h. The irradiated cells were harvested and reacted with antibodies against XRCC4 or DNA-ligase IV, followed by DAPI staining. The stained cells were analyzed by confocal microscopy. Green color represents XRCC4 and DNA-Ligase IV, and blue color represents DAPI stained nucleus (100-fold amplification).