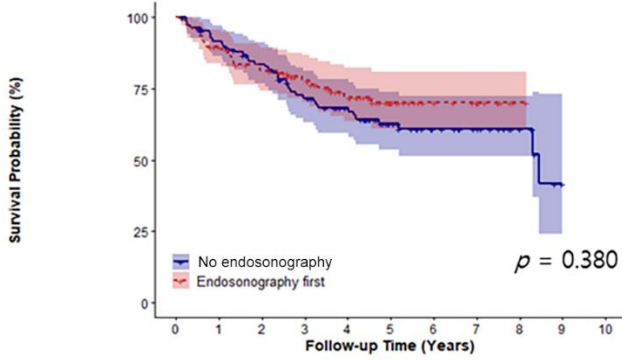


(A)

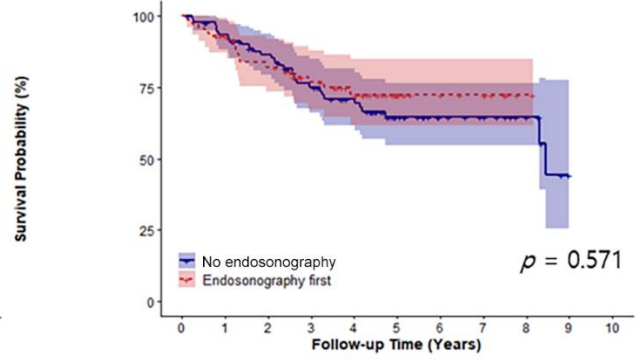
Histologic type_others

Before PSM



	0	1	2	3	4	5	6	7	8	9	10
No endosonography	109	96	81	64	54	35	22	17	10	0	0
Endosonography first	105	90	78	61	45	25	13	10	1	0	0

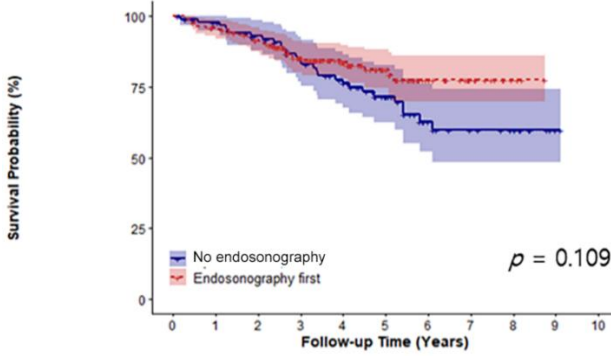
After PSM



	0	1	2	3	4	5	6	7	8	9	10
No endosonography	93	83	72	57	48	29	18	15	10	0	0
Endosonography first	70	62	53	39	30	16	10	8	1	0	0

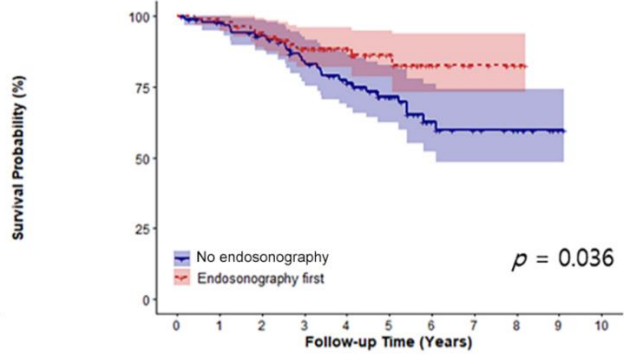
Histologic type_adenocarcinoma

Before PSM



	0	1	2	3	4	5	6	7	8	9	10
No endosonography	91	85	77	65	55	39	22	16	12	1	0
Endosonography first	168	157	145	112	79	46	25	12	4	0	0

After PSM

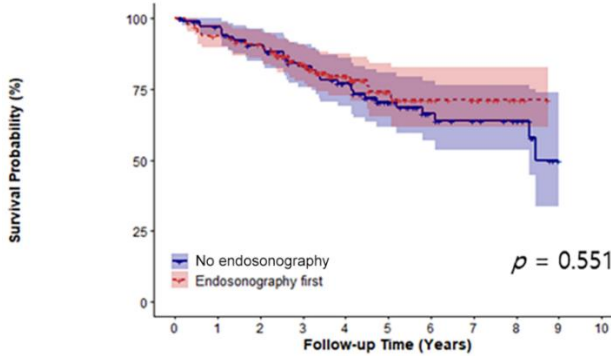


	0	1	2	3	4	5	6	7	8	9	10
No endosonography	91	85	77	65	55	39	22	16	12	1	0
Endosonography first	85	82	76	58	43	25	14	7	3	0	0

(B)

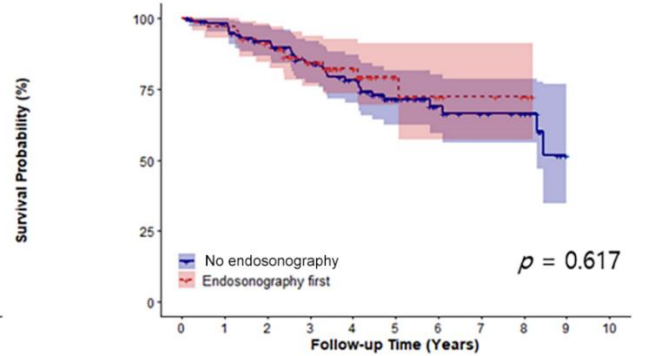
Spatial location_peripheral

Before PSM



	0	1	2	3	4	5	6	7	8	9	10
No endosonography	109	101	89	75	63	42	25	19	15	0	0
Endosonography first	131	121	113	89	57	28	16	11	4	0	0

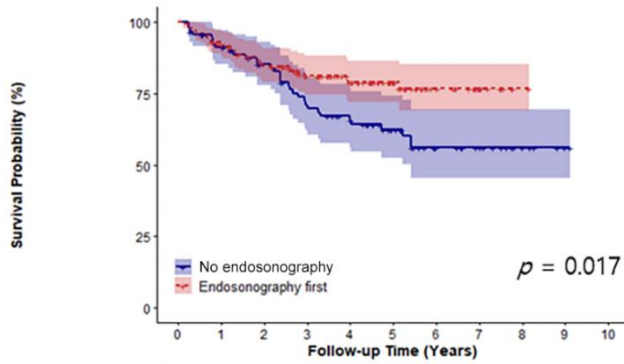
After PSM



	0	1	2	3	4	5	6	7	8	9	10
No endosonography	104	97	87	73	62	41	25	19	15	0	0
Endosonography first	67	65	59	45	31	12	7	5	3	0	0

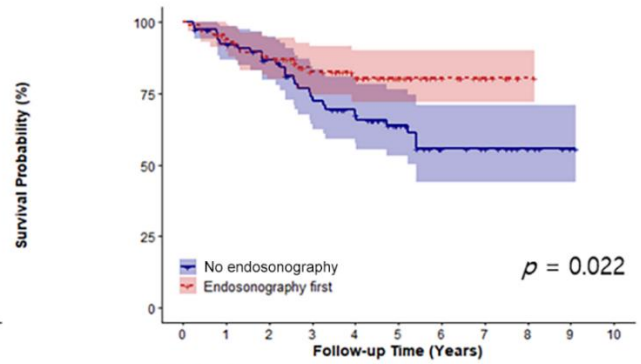
Spatial location_central

Before PSM



	0	1	2	3	4	5	6	7	8	9	10
No endosonography	91	80	69	54	46	32	19	14	7	1	0
Endosonography first	142	126	110	84	67	43	22	11	1	0	0

After PSM

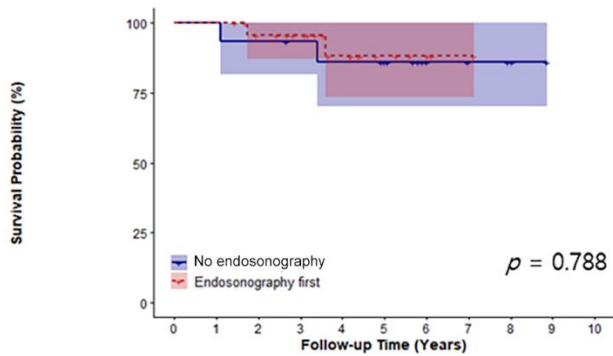


	0	1	2	3	4	5	6	7	8	9	10
No endosonography	80	71	62	49	41	27	15	12	7	1	0
Endosonography first	88	79	70	52	42	29	17	10	1	0	0

(C)

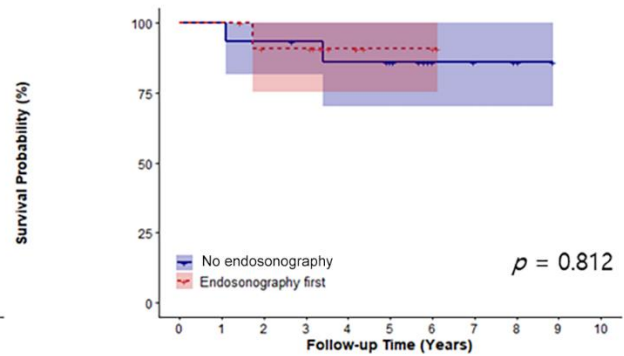
Tumor attenuation_part-solid

Before PSM



	0	1	2	3	4	5	6	7	8	9	10
No endosonography	15	15	14	13	12	10	5	3	2	0	0
Endosonography first	24	24	20	17	11	5	3	1	0	0	0

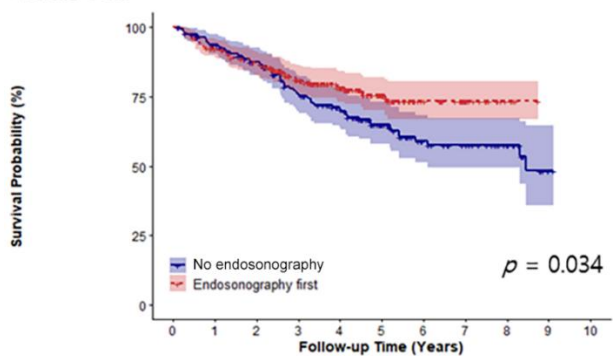
After PSM



	0	1	2	3	4	5	6	7	8	9	10
No endosonography	15	15	14	13	12	10	5	3	2	0	0
Endosonography first	12	12	9	9	5	2	2	0	0	0	0

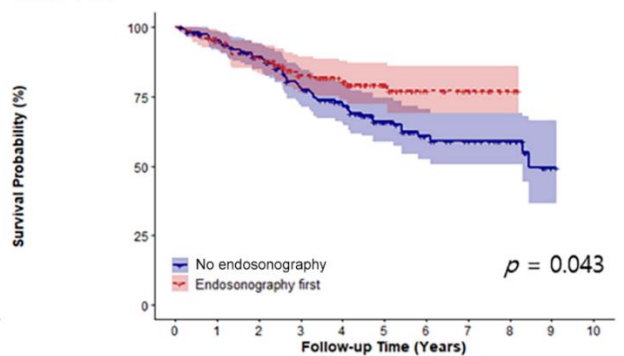
Tumor attenuation_part-solid

Before PSM



	0	1	2	3	4	5	6	7	8	9	10
No endosonography	185	166	144	116	97	64	39	30	20	1	0
Endosonography first	249	223	203	156	113	66	35	21	5	0	0

After PSM



	0	1	2	3	4	5	6	7	8	9	10
No endosonography	169	153	135	109	91	58	35	28	20	1	0
Endosonography first	143	132	120	88	68	39	22	15	4	0	0

S5 Fig. The overall survival curves according to histologic type, spatial location, and tumor attenuation in “endosonography first & underwent surgery vs. no endosonography” groups. Especially

in patients with adenocarcinoma (A), with central tumor (B), and with solid tumor (C), performing endosonography first & surgery had a better survival rate than direct surgery. Matching with age, sex, body mass index, smoking status, underlying pulmonary disease, underlying extra-pulmonary comorbidities, clinical T category, and histologic type. PSM, propensity score matching.