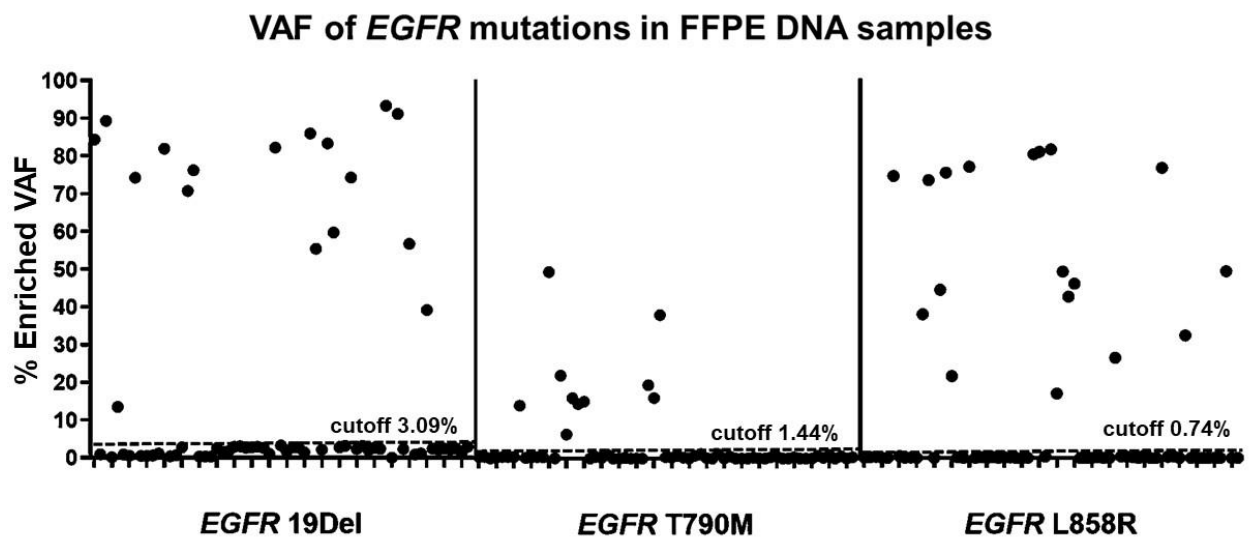
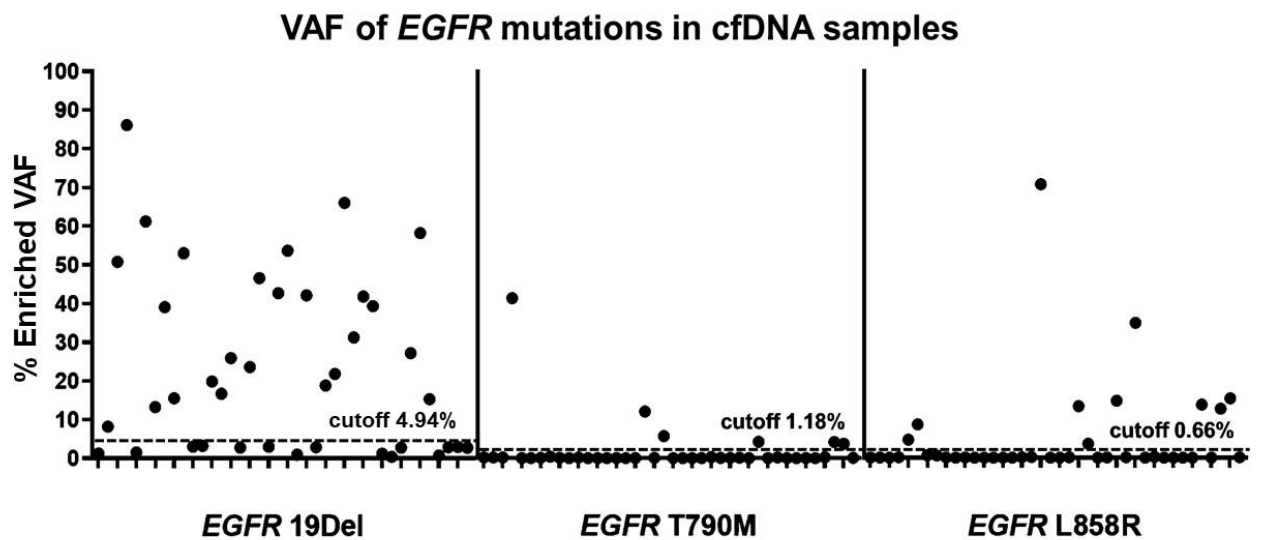


(A)



(B)



**S8 Fig.** The variant allele frequencies (% VAFs) after blocker displacement amplification amplicon enrichment of epidermal growth factor receptor (*EGFR*) mutations from formalin-fixed, paraffin-embedded (A) and cell-free DNA (cfDNA) (B) samples. The dots represent each sample of each *EGFR* mutation in exon 19, 20 and 21.