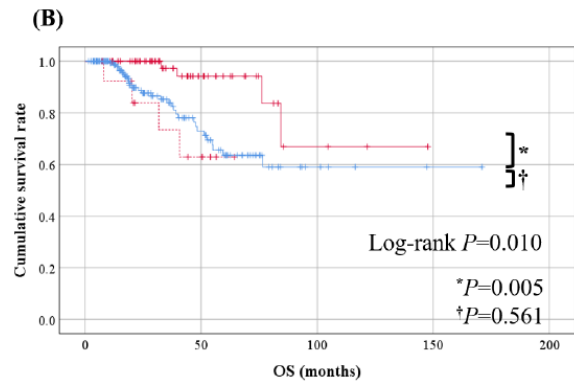


		N	Events	Median (months)	95% CI
—	CRS, R0	66	41	23.4	16.7–30.1
...	CRS, residual	14	11	18.6	6.6–30.6
—	No surgery	182	139	13.9	12.3–15.6



		N	Events	3-year survival rate
—	CRS, R0	66	4	97.3%
...	CRS, residual	14	4	73.4%
—	No surgery	182	31	84.0%

S6 Fig. Comparisons of survival outcomes according to secondary cytoreductive surgery (CRS) and residual tumor following surgery. (A) progression-free survival, (B) overall survival. CI, confidence interval.