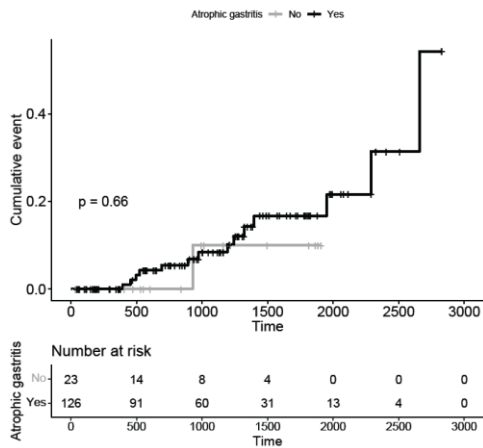
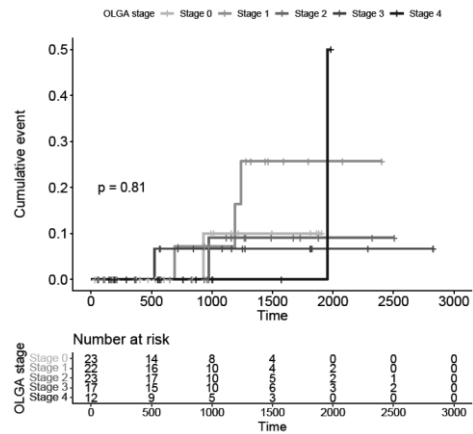


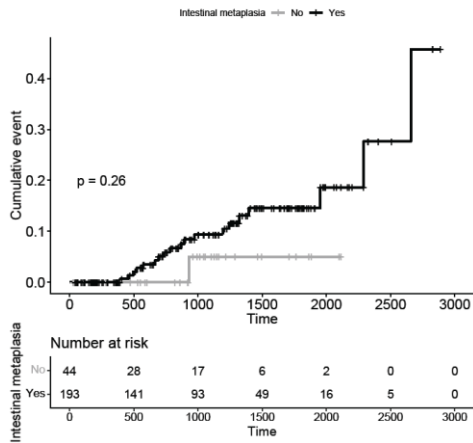
### (A) Atrophic gastritis



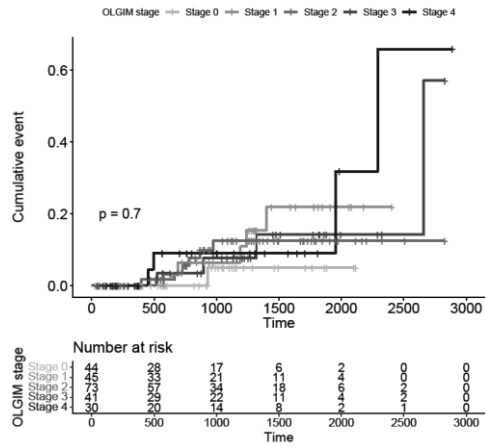
### (B) OLGA stage



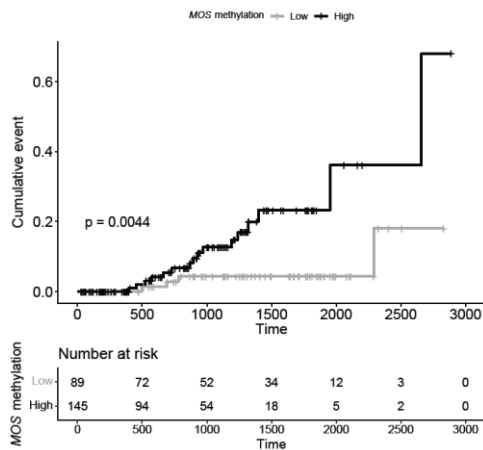
### (C) Intestinal metaplasia



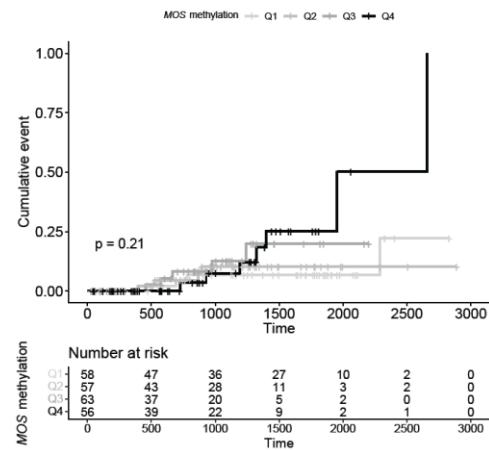
### (D) OLGIM stage



### (E) MOS methylation (cutoff value)



### (F) MOS methylation (quartiles)



**S4 Fig.** Kaplan-Meier curves for cumulative incidences of metachronous recurrence according to atrophic gastritis (A), OLGA stage (B), intestinal metaplasia (C), OLGIM stage (D), *MOS* methylation status (E, F) in the whole cohort (n=261). Atrophic gastritis and intestinal metaplasia were defined as the presence of histologic atrophy (score 1-3) and intestinal metaplasia (score 1-3), respectively, at either antrum or corpus by the updated Sydney scoring system. The cutoff value (35.82%) of high or low level of *MOS* methylation was determined by receiver operating characteristic curve analysis. OLGA, operative link on gastritis assessment; OLGIM, operative link on gastric intestinal metaplasia assessment.