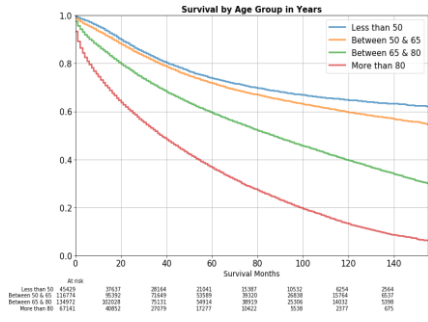
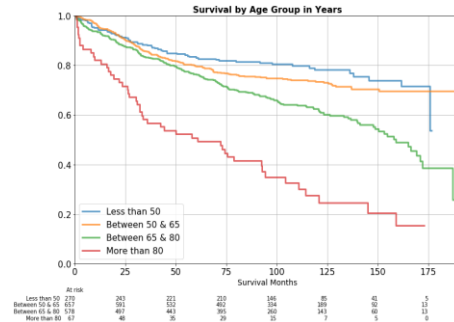


### A. Age in the SEER dataset



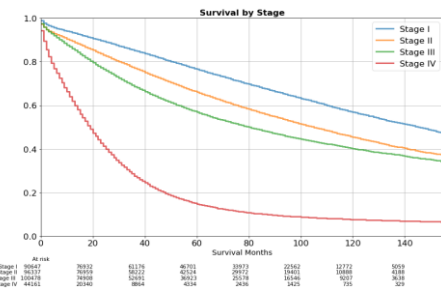
Log-rank:  $p < 0.001$

### B. Age in the Korean dataset



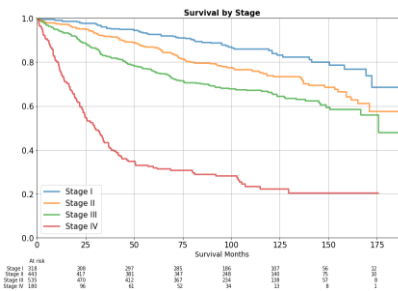
Log-rank:  $p < 0.001$

### C. Stage in the SEER dataset



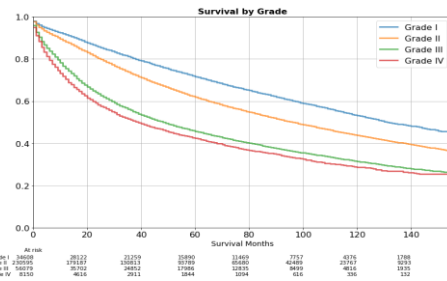
Log-rank:  $p < 0.001$

### D. Stage in the Korean dataset



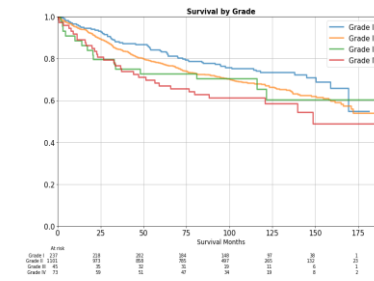
Log-rank:  $p < 0.001$

### E. Grade in the SEER dataset



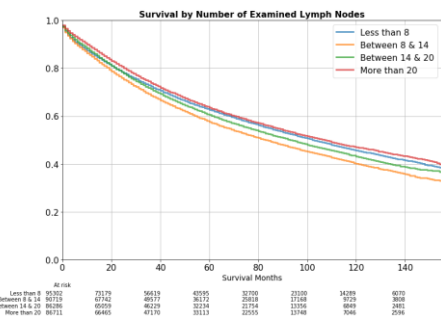
Log-rank:  $p < 0.001$

### F. Grade in the Korean dataset



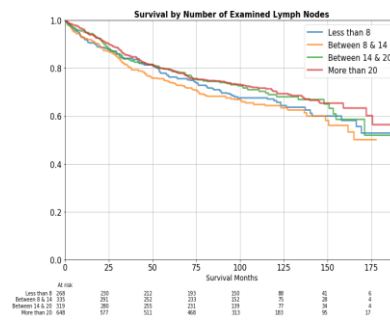
Log-rank:  $p=0.047$

### G. Examined LNs in the SEER dataset



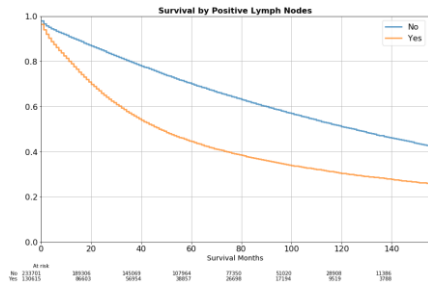
Log-rank:  $p < 0.001$

### H. Examined LNs in the Korean dataset



Log-rank:  $p=0.11$

I. Positive LNs in the SEER dataset



Log-rank:  $p < 0.001$

J. Positive LNs in the Korean dataset



Log-rank:  $p < 0.001$

K. CEA in the SEER dataset



Log-rank:  $p < 0.001$

L. CEA in the Korean dataset



Log-rank:  $p < 0.001$

**S6 Fig.** Comparison of overall survival curves between the Surveillance, Epidemiology, and End Results (SEER) dataset and the Korean dataset based on age, stage, grade, examined lymph nodes (LNs), positive LNs, and carcinoembryonic antigen.