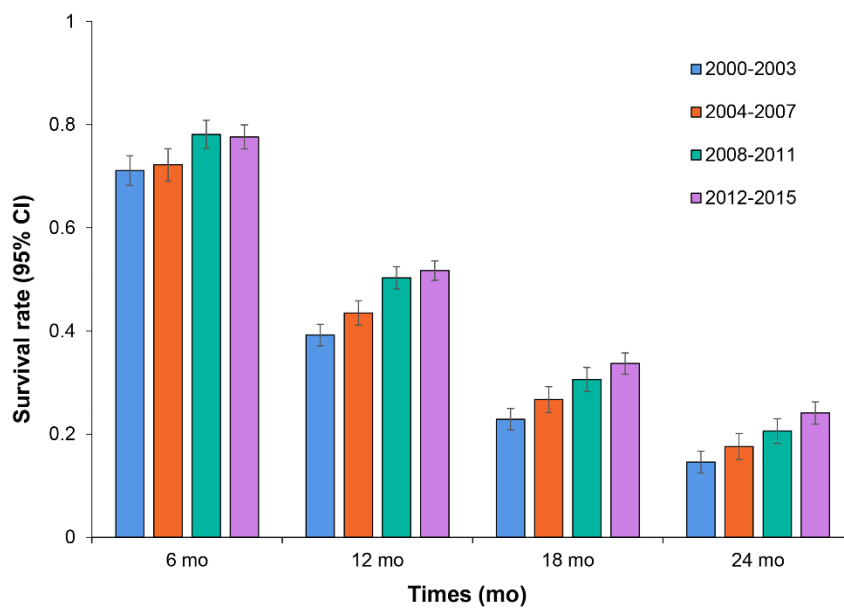


Treatment characteristics	Overall survival rate (95% confidence interval)				
	Total	2000–2003	2004–2007	2008–2011	2012–2015
Survival rate (%)					
At 6 months	75.1 (73.7–76.5)	71.1 (37.4–74.8)	72.2 (69.6–74.8)	78.1 (75.6–80.6)	77.6 (75.1–80.1)
At 12 months	46.9 (44.9–48.9)	39.2 (33.8–44.6)	43.5 (39.8–47.2)	50.3 (46.6–54.0)	51.7 (48.0–55.4)
At 18 months	29.0 (26.7–31.3)	22.9 (16.8–29.0)	26.7 (22.4–31.0)	30.6 (26.2–35.0)	33.7 (29.4–38.0)
At 24 months	19.7 (17.2–22.2)	14.6 (8.2–21.0)	17.6 (13.1–22.1)	20.6 (15.9–25.3)	24.1 (19.5–28.7)



S1 Fig. Overall survival rates at 6-month intervals according to the treatment period. CI, confidence interval.