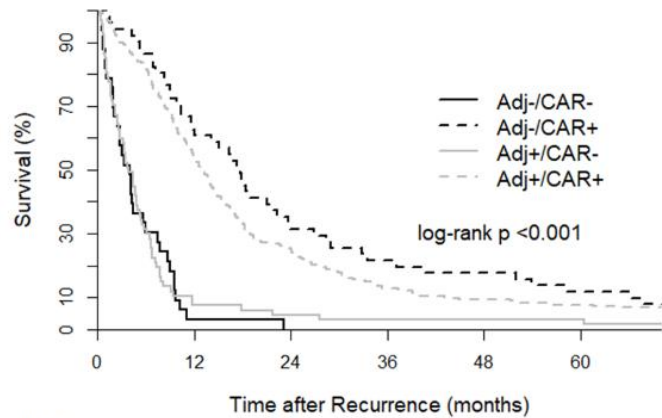
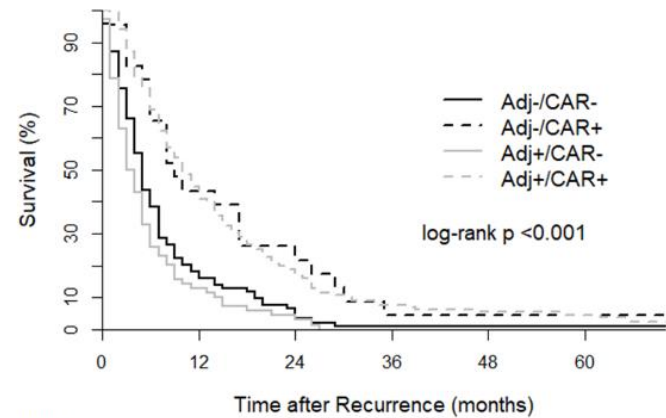


**A**

Number at risk	0	12	24	36	48	60
Adj-/CAR-	33	1	0	0	0	0
Adj-/CAR+	51	32	16	11	9	6
Adj+/CAR-	67	5	3	2	2	2
Adj+/CAR+	282	153	71	36	24	17

**B**

Number at risk	0	12	24	36	48	60
Adj-/CAR-	94	17	6	1	1	1
Adj-/CAR+	23	10	6	1	1	1
Adj+/CAR-	71	9	3	0	0	0
Adj+/CAR+	133	59	25	10	7	6

**S5 Fig.** Kaplan-Meier curves with log-rank test for survival after recurrence according to the status of receiving adjuvant chemotherapy and chemotherapy after recurrence in the Y-cohort (A) and in the S-cohort (B). Adj, adjuvant chemotherapy; CAR, chemotherapy after recurrence; n, number of patients. In the subgroup analysis of MSS/pMMR tumors, a similar finding was observed in the overall cohort (log-rank  $p < 0.001$ ) (Table 4, Fig. 1B) and each cohort (log-rank  $p < 0.001$  and  $p < 0.001$  in the Y-cohort and S-cohort, respectively) (S6A and S6B Fig.).