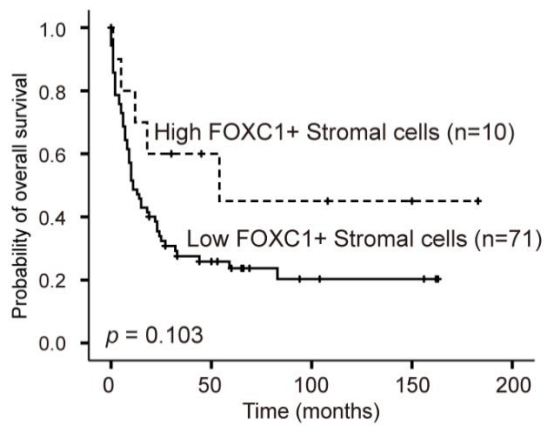
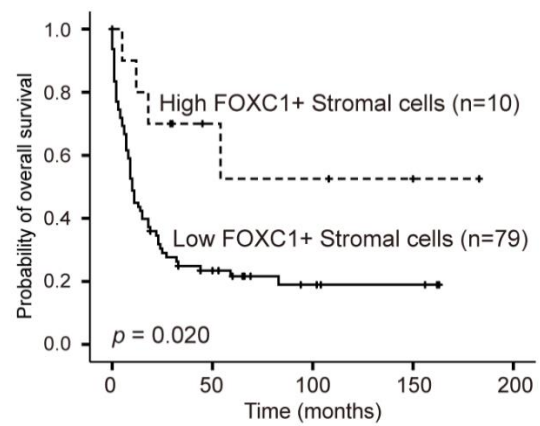


A. All cases except NKTL (n=81)



B. All cases except Head and Neck (n=89)



S6 Fig. Kaplan-Meier analyses for overall survival of T and NK cell lymphoma patients according to the degree of FOXC1⁺ stromal cell infiltration. (A) All cases except NKTL cases. (B) All cases except tumors arising in head and neck site. NK, natural killer; FOXC1, forkhead box C1; NKTL, extranodal natural killer/T-cell lymphoma.