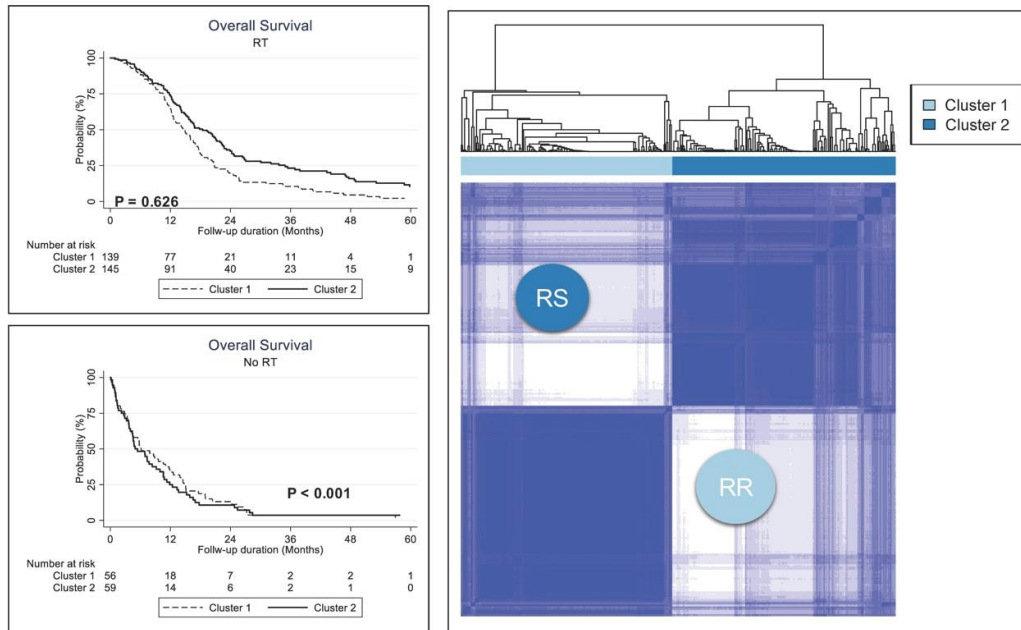
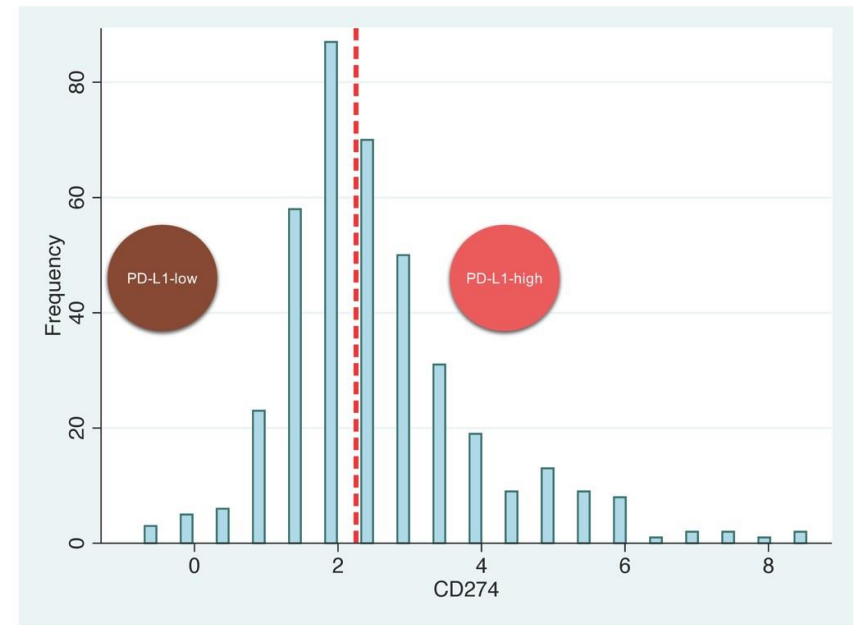


① Defining radiosensitive (RS) and radioresistant (RR) group using overall survival rate according to the receipt of radiation therapy (RT)



② Defining PD-L1-low and PD-L1-high by the median value of the CD274 gene expression count



S1 Fig. Schematic representation of patient grouping in current study. Definition process about RS vs. RR groups and programmed death-ligand 1 (PD-L1)–high vs. PD-L1-low groups.