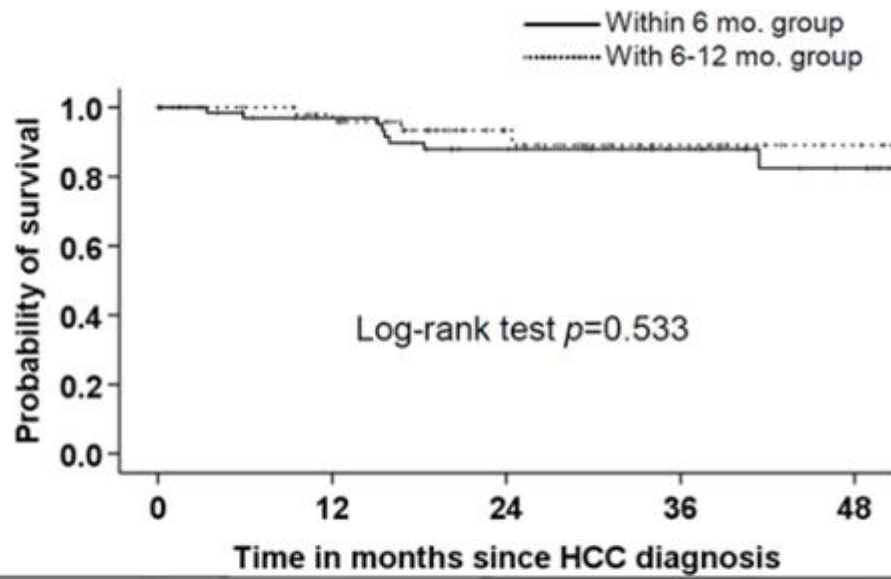
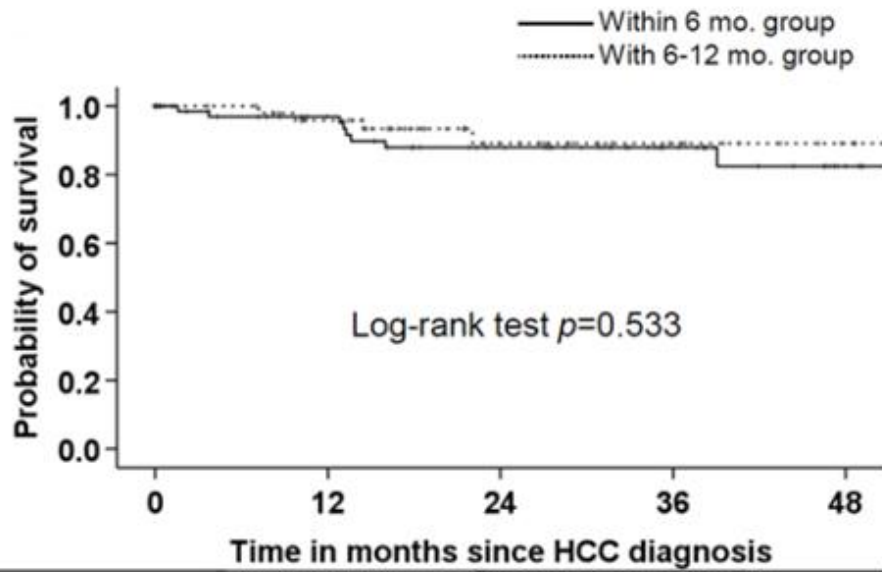


A



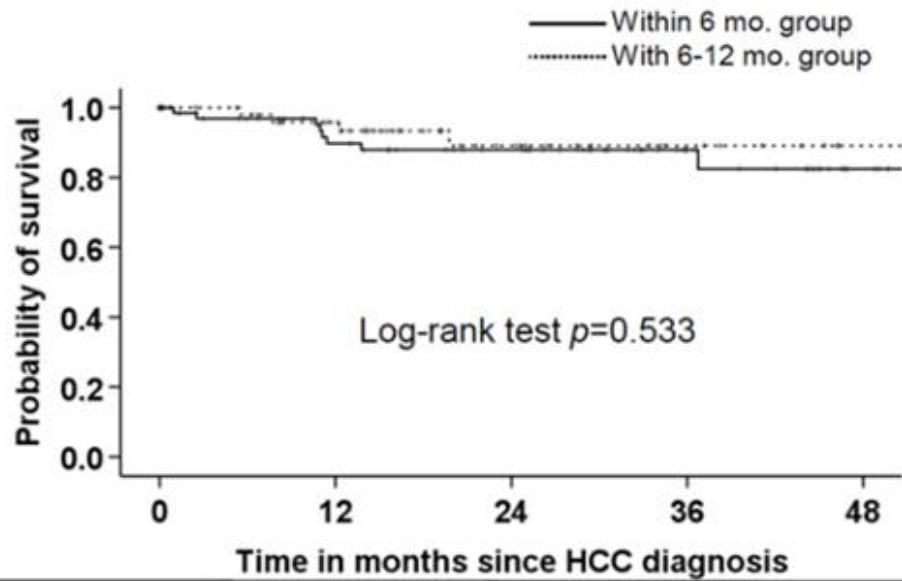
		0	12	24	36	48
Within 6 mo.	Events	0	2	5	0	1
	# at risk	70	57	43	26	12
With 6-12 mo.	Events	0	2	2	0	0
	# at risk	57	45	21	10	4

B



		0	12	24	36	48
Within 6 mo.	Events	0	3	4	0	1
	# at risk	70	54	40	21	7
With 6-12 mo.	Events	0	2	2	0	0
	# at risk	57	41	19	9	2

C



		Time in months since HCC diagnosis				
		0	12	24	36	48
Within 6 mo.	Events	0	6	1	0	1
	# at risk	70	50	39	16	3
With 6-12 mo.	Events	0	2	2	0	0
	# at risk	57	39	17	7	1

S3 Fig. Observed and corrected survival of the surveillance interval within 6-months group and with 6- to 12-month group. (A) Observed survival of the surveillance interval within 6-months and with 6- to 12-month groups were not significantly different. (B) After lead-time bias correction with 70 days of hepatocellular carcinoma (HCC) sojourn time, there was no significant difference in survival between the two groups. (C) After lead-time bias correction with 140 days of HCC sojourn time, there was no significant difference in survival between the two groups.