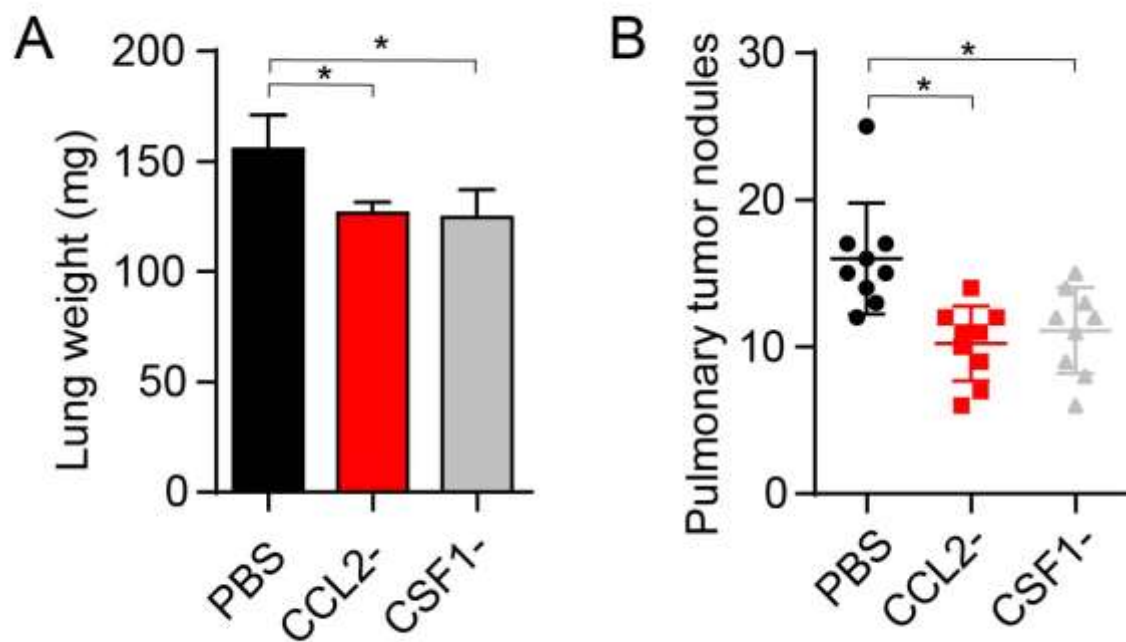


Supplementary Material



S1 Fig. Inhibition of tumor-associated macrophages (TAMs) by anti-CCL2 or anti-CSF1R antibody suppresses the metastasis of colorectal cancer cells. (A) The lung weight of tumor-bearing mice treated with phosphate buffered saline (PBS) or anti-CCL2 or anti-CSF1R (n=10). (B) The number of pulmonary tumor nodules in tumor-bearing mice treated with PBS or anti-CCL2 or anti-CSF1R (n=10). The data was presented as the mean±standard error of mean from three independent experiments. *p < 0.05.