

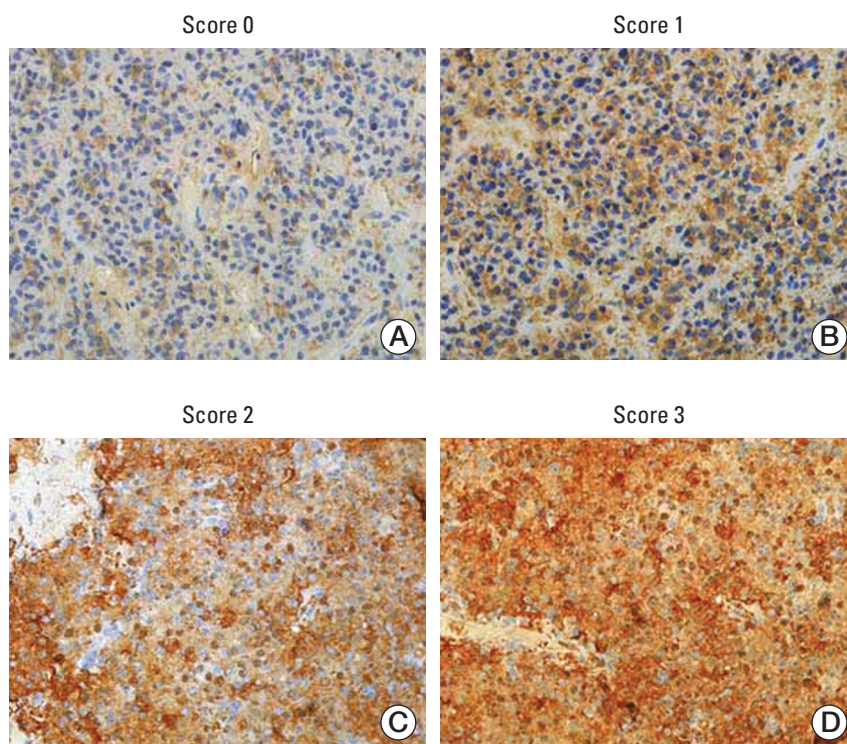
Inhibition of SKP2 Sensitizes Bromocriptine Induced Apoptosis in Human Prolactinoma Cells

Jinxiang Huang, MD¹, Fenglin Zhang, MD², Lei Jiang, MD¹, Guohan Hu, MD¹, Wei Sun, MD¹, Chenran Zhang, MD¹, Xuehua Ding, MD¹

¹Department of Neurosurgery, Shanghai Institute of Neurosurgery, Changzheng Hospital, Second Military Medical University, Shanghai,

²Department of Neurosurgery, The 411th Hospital of PLA, Shanghai, China

Supplementary Data



Supplementary Fig. S1. Score of the SKP2 definition for immunohistochemical staining. Representative immunohistochemical staining for SKP2 score in human pituitary adenoma samples. SKP2, S-phase kinase associated protein 2 (A-D, $\times 200$).